

Green Sea Floyds High School

4990 Tulip Grove Road
Green Sea, SC 29545



South Carolina State Report Card

State and federal laws require public schools to release report cards to the public each year. This year, the report card has been updated to reflect changes in reporting directed by the SC Education Oversight Committee. Schools will not be rated for state accountability purposes until Fall 2017 when the state will transition to a single accountability system. The following reports student performance in school year 2014-15.

Grades:	6-12 Middle	Principal:	Dr. Andrea Pridgen
Enrollment:	622 students	Superintendent:	Dr. Rick Maxey
School Phone:	843-392-3131	Board Chair:	Joe DeFeo
School Website:	http://gsfh.horrycountyschools.net/		



Profile of the SC Graduate

World Class Knowledge

- Rigorous standards in language arts and math for career and college readiness
- Multiple languages, science, technology, engineering, mathematics (STEM), arts and social sciences*

World Class Skills

- Creativity and innovation
- Critical thinking and problem solving
- Collaboration and teamwork
- Communication, information, media and technology
- Knowing how to learn

Life and Career Characteristics

- Integrity
- Self-direction
- Global perspective
- Perseverance
- Work ethic
- Interpersonal skills

* 21st Century core courses in Social Sciences include History, Geography, Economics, Government and Civics.

WORLD CLASS SKILLS & LIFE AND CAREER CHARACTERISTICS

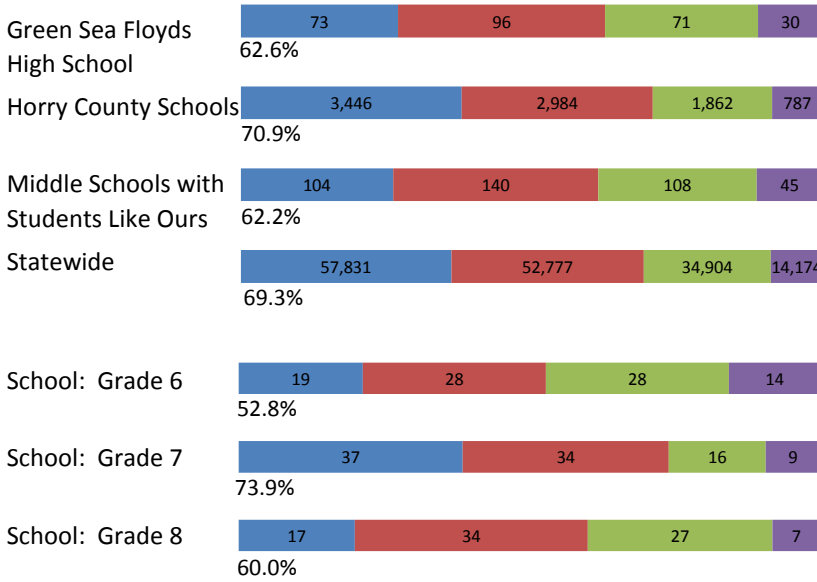
Our school is helping all students develop the world class skills and life and career characteristics of the Profile of the Graduate by ...

Our school is helping all students develop the world class skills and life and career characteristics of the Profile of the Graduate by providing students individualized instruction through the implementation of Personalized Digital Learning and by fostering a sense of personal responsibility for their own learning. Teachers consistently use a Blended Learning Model and implement rotations, which allow students the opportunity to use technology and adaptive digital content. Our students thrive in a culture of high expectations with an opportunity to take a plethora of Honors and Advanced Placement courses and Career and Technology Education courses. Students requiring additional support participate in a bi-weekly after-school program with emphasis on remediation and increasing performance on state and national assessments. U.S. History and Biology End-of-Course test scores show significant increase, and PASS scores show increase in 7th and 8th grade Science and Social Studies. High school students take part in an Advisory program that focuses on developing leadership skills and college and career readiness. Students at Green Sea Floyds Middle/High School are involved in a variety of extra-curricular activities, such as clubs, honor societies, academic competitions, and athletics. Sixth grade students participated in the Jackson's Scholars Leadership and Ethics Academy. Junior Beta Club won 2nd place in the Talent Competition at the SC Junior Beta Club Convention, which qualified them for the National Junior Beta Club Convention. The high school robotics team won 2nd place at the Horry County School Technology Fair. The fine arts department at both the middle and high school levels offer theater classes and presented two excellent musicals: Mulan Jr. and High School Musical. We continue to support parent involvement with Open House, parent meetings, college/financial aid workshops, IGP conferences, School Improvement Council, and volunteering. The goal of the GSFM/HS administration and faculty is to ensure all students are college and career ready. With an increased focus on student achievement, teachers and administrators will continue to analyze student data and participate in meaningful professional development. The success of our students is attributed to the close working relationships among the students, faculty, parents, and community. Dr. Andrea Pridgen, Principal Tim Howell, SIC President

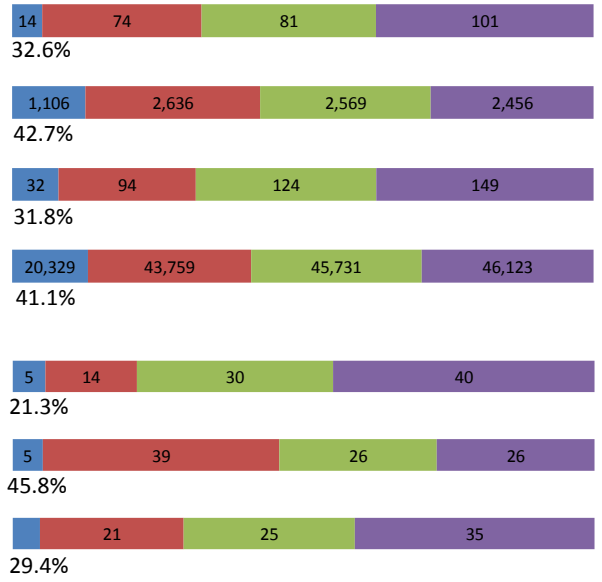
KNOWLEDGE

The ACT Aspire assessment was given to students in grades 3-8 in Spring 2015. Students were assessed in the subject areas of Reading, English, Mathematics and Writing

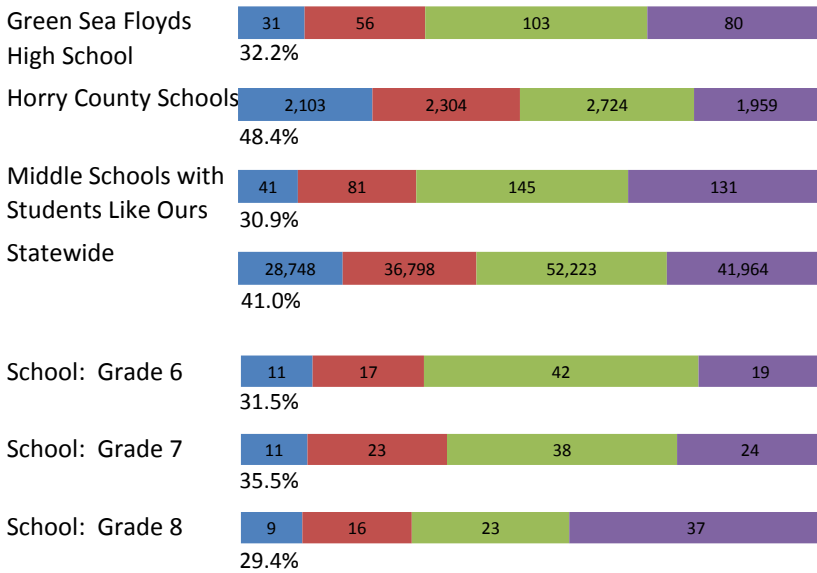
ENGLISH



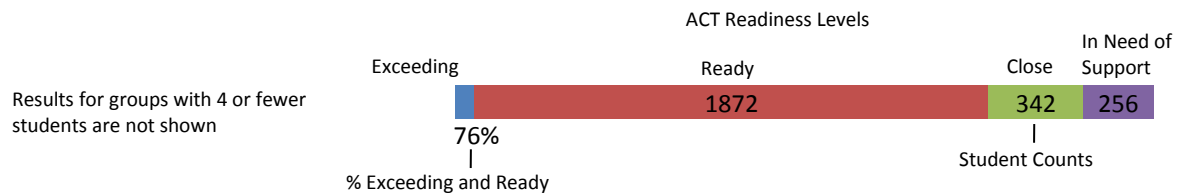
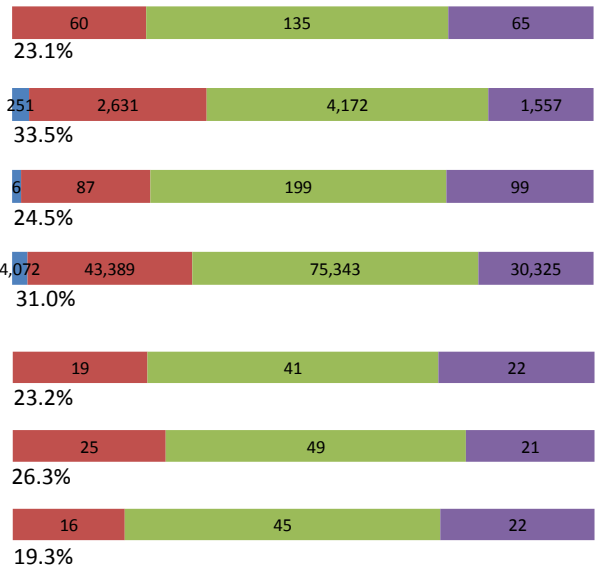
READING



MATHEMATICS



WRITING



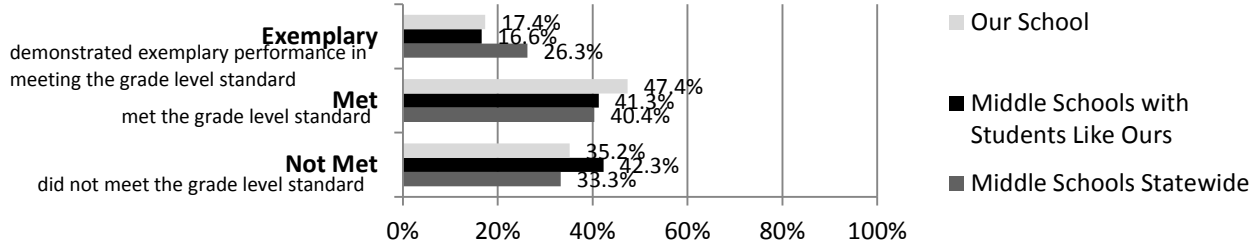
Abbreviations for Missing Data

- N/A-Not Applicable
- N/AV-Not Available
- N/C-Not Collected
- N/R-Not Reported
- I/S-Insufficient Sample

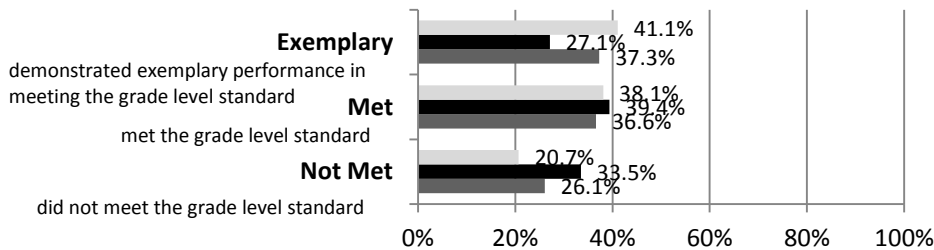
KNOWLEDGE

The SC Palmetto Assessment of State Standards (SCPASS) was given to students in grades 4 - 8 in Spring 2015. Students were assessed in the subject areas of Science and Social Studies.

Science



Social Studies



Science SCPASS

Our School: Percent Met and Above for each grade level		
6th grade	7th grade	8th grade
60.7	66.7	67.1

Social Studies SCPASS

Our School: Percent Met and Above for each grade level		
6th grade	7th grade	8th grade
80.9	74.0	83.5

Note: Results include SC-Alt assessment results.

Exemplary	"Exemplary" : student demonstrated exemplary performance in meeting the grade level standard.
Met	"Met" : student met the grade level standard.
Not Met	"Not Met" : student did not meet the grade level standard.

End of Course Tests

Percent of tests with scores of 70 or above on:	Our School	Middle Schools with Students Like Ours
Algebra 1/Math for the Technologies 2	86.5	95.7
English 1	68	91.2
Biology 1	88.6	67.1
US History and the Constitution	56.9	53.8
All Subjects	77.2	93.6

Middle Schools with Students Like Ours are middle schools with poverty indices of no more than 5% above or below the index for the school.

Abbreviations for Missing Data

N/A-Not Applicable N/AV-Not Available N/C-Not Collected N/R-Not Reported I/S-Insufficient Sample

OPPORTUNITIES

	Our School	Change from Last Year	Middle Schools with students like ours
Students (n = 622)			
Percent of students participating in Medicaid, SNAP, or TANF; homeless, foster, or migrant students (poverty index)	81.1	Down from 85.8%	N/A
Percent of students (grade 7 & 8) enrolled in HS credit courses	23.0	Down from 24.6%	23.5
Attendance Rate	95.2	Down from 96.2%	95.0
With disabilities	18.1	Down from 18.5%	14.8
Out of school suspensions or expulsions for violent and/or criminal offenses	1.6	Down from 2.5%	0.9
Percentage of students served by gifted and talented programs	22.4	Up from 20.2%	15.8
Percentage of students retained	2.5	Up from 1.9%	0.9
Annual dropout rate	0.0	No change	0.0
Teachers (n = 48)			
Percentage of teachers with advanced degrees	58.3	Down from 61.2%	58.1
Percentage of teachers on continuing contract	72.9	Up from 69.4%	72.6
Teachers returning from previous year	85.1	Down from 87.4%	84.3
Teacher attendance rate	94.2	Down from 94.3%	94.7
Average teacher salary*	\$52,495	Down 1.2%	\$46,433
Professional development days / teacher	16.1 days	Down from 17.0 days	10.9 days
Percentage of teacher vacancies for more than 9 weeks	6.4	N/A	0.5
School			
Principal's years at school	4.0	Up from 3.0	4.0
Student-teacher ratio in core subjects	23.2 to 1	Up from 20.4 to 1	20.7 to 1
Prime instructional time	87.3	Down from 88.5%	88.3
Opportunities in the arts	Good	No change	Good
Opportunities in foreign languages	Poor	N/A	Poor
AdvancEd (SACS) accreditation	Yes	No change	Yes
Parents attending conferences	100.0	Up from 99.0%	99.5
Character development program	Poor	Down from Fair	Good
Avg. age of books / electronic media in the school library	12.0	N/A	14.8
Number of resources available per student in the school library media center	16.8	N/A	25.6
Bandwidth capacity per student	50-100 Mbps	N/C	N/A
Percent of classrooms with wireless access	51-75%	N/C	N/A
District-issued learning devices per student	1.5	N/C	0.7
District-issued technology devices per teacher	2.2	N/C	1.9
Percentage of classes not taught by highly qualified teachers	0.4	Down from 3.2%	5.3
Dollars spent per pupil**	\$14,115	Up 6.0%	\$7,869
Percent of expenditures for instruction**	53.5	Up from 53.2%	61.7
Percent of expenditures for teachers' salaries**	55.0	Up from 54.0%	62.5

* Includes current year teachers contracted for 190 days or more.

** Prior year audited financial data are reported.

Abbreviations for Missing Data

N/A-Not Applicable

N/AV-Not Available

N/C-Not Collected

N/R-Not Reported

I/S-Insufficient Sample

OPPORTUNITIES**Evaluations by Teachers, Students, and Parents****Evaluations by Teachers, Students, and Parents**

	Teachers	Students*	Parents*
Number of surveys returned	N/A	N/A	N/A
Percent satisfied with learning environment	N/A	N/A	N/A
Percent satisfied with social and physical environment	N/A	N/A	N/A
Percent satisfied with school-home relations	N/A	N/A	N/A

* Only students at the highest middle school grade and their parents were included.

State Ratings History of School

Year	Absolute Rating	Growth Rating
2014	Average	Below Average
2013	Average	Average
2012	Average	Average

Based on state law, schools will not be rated for state accountability purposes until Fall 2017.

Additional Resources

SC State Content Standards
[Family-Friendly Guides to the SC Content Standards](#)
[2014-15 Accountability Manual](#)
[Report Card Data Files](#)
[ESEA Data Files](#)

Abbreviations for Missing Data

N/A-Not Applicable

N/AV-Not Available

N/C-Not Collected

N/R-Not Reported

I/S-Insufficient Sample