

## Cane Bay Middle School

1175 Cane Bay Boulevard  
Summerville, SC 29483



# South Carolina State Report Card

State and federal laws require public schools to release report cards to the public each year. This year, the report card has been updated to reflect changes in reporting directed by the SC Education Oversight Committee. Schools will not be rated for state accountability purposes until Fall 2017 when the state will transition to a single accountability system. The following reports student performance in school year 2014-15.

<b>Grades:</b>	5-8 Middle	<b>Principal:</b>	Carol Beckmann-Bartlett
<b>Enrollment:</b>	746 students	<b>Superintendent:</b>	Mr. Michael Turner
<b>School Phone:</b>	843-899-1857	<b>Board Chair:</b>	Mr. James Hayes
<b>School Website:</b>	<a href="http://www.bcsdschools.net/cbm">http://www.bcsdschools.net/cbm</a>		



### Profile of the SC Graduate

#### World Class Knowledge

- Rigorous standards in language arts and math for career and college readiness
- Multiple languages, science, technology, engineering, mathematics (STEM), arts and social sciences\*

#### World Class Skills

- Creativity and innovation
- Critical thinking and problem solving
- Collaboration and teamwork
- Communication, information, media and technology
- Knowing how to learn

#### Life and Career Characteristics

- Integrity
- Self-direction
- Global perspective
- Perseverance
- Work ethic
- Interpersonal skills

\* 21st Century core courses in Social Sciences include History, Geography, Economics, Government and Civics.

### WORLD CLASS SKILLS & LIFE AND CAREER CHARACTERISTICS

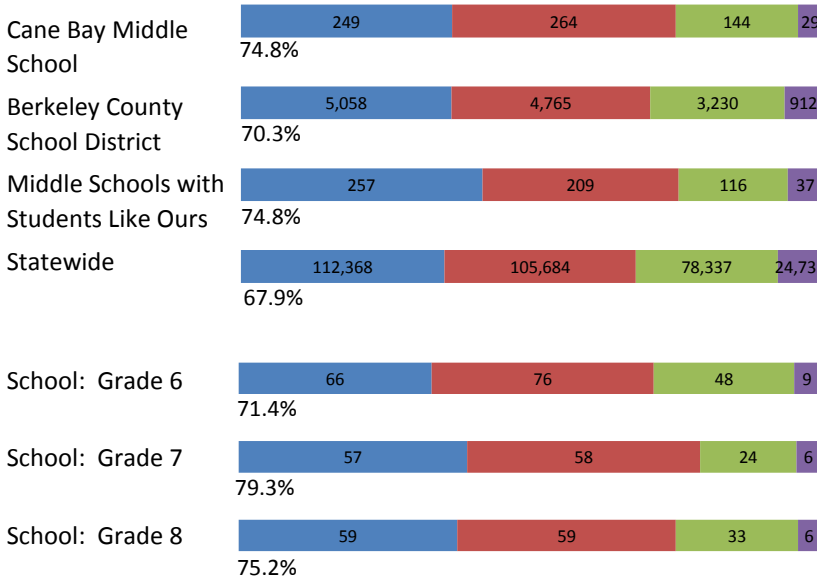
*Our school is helping all students develop the world class skills and life and career characteristics of the Profile of the Graduate by ...*

Cane Bay Middle School is helping all students develop the characteristics of the Profile of the South Carolina Graduate by providing a comprehensive, rigorous academic program that integrates a full complement of opportunities to promote the development of well-rounded students. We provide this environment by following "The Cane Bay Way" – a commitment to excellence in all that we do. Our teachers work together in Professional Learning Communities on a weekly basis to ensure research based strategies such as Project Based Learning, and authentic reading and writing assignments. Support staff including our Media Center team and Instructional Coach support this collaboration by providing resources and research support for new practices. Students who need additional support for learning are provided with re-teaching time, credit recovery, and intervention for content areas. Academic extensions including Robotics, Trebuchet, STEMs camp, Google CS First classes, Mock Trial, and QUEST are sponsored by teachers to provide experiences beyond the classroom that engage students in genuine problem solving experiences related to content. School-wide character education and service projects further support the Cane Bay vision for excellence. Wrap around supports including classroom guidance, an anti-bullying initiative, and student-to-student supports such as Junior Cobra to Cobra new student/transition events and Student Council holiday dinner and toy drives have established a tradition of service. Student of the Month and Renaissance recognitions regularly emphasize the importance of good character and hard work in meeting academic, social, and attendance standards. Connections to Career and College opportunities are fostered through field experiences including a STEM based trip to Washington, D.C.; laboratory and rotation observations at the Medical University of South Carolina, and grade level field trips to Boeing and the SC Aquarium. Our guidance team hosts an annual career exploration event that brings together a wide variety of community and business partners to speak to small groups of Cane Bay students about the experiences and skills needed for success in a work setting. Additionally multiple guest speakers, in-class activities and assignments build relevance to the academic work set before students. In the three short years of Cane Bay's existence, our students, staff, and community have established a caring, academically committed environment. We look forward to maintaining and growing our focus on excellence in the coming years and appreciate the support of the Cane Bay Community in helping develop future South Carolina graduates and leaders. Mrs. Aprille Maynor, Chair of the School Improvement Council Mrs. Carol Beckmann-Bartlett, Principal

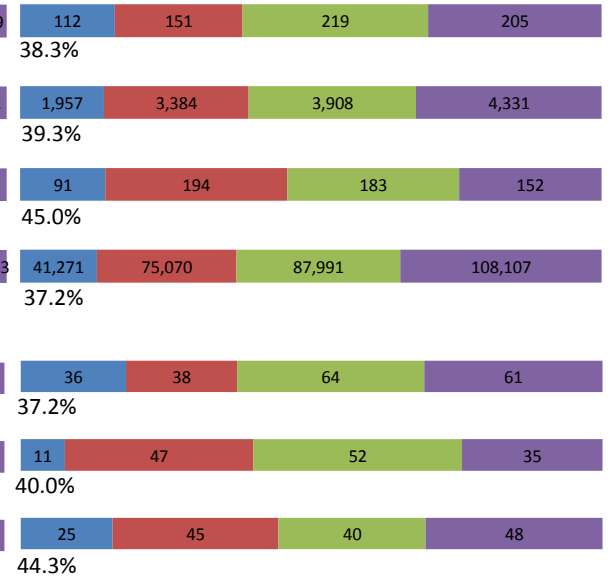
**KNOWLEDGE**

The ACT Aspire assessment was given to students in grades 3-8 in Spring 2015. Students were assessed in the subject areas of Reading, English, Mathematics and Writing

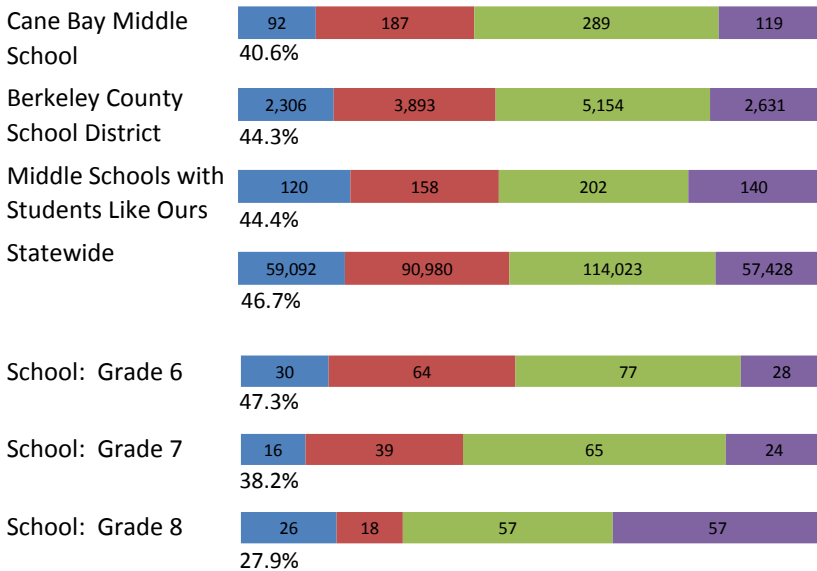
**ENGLISH**



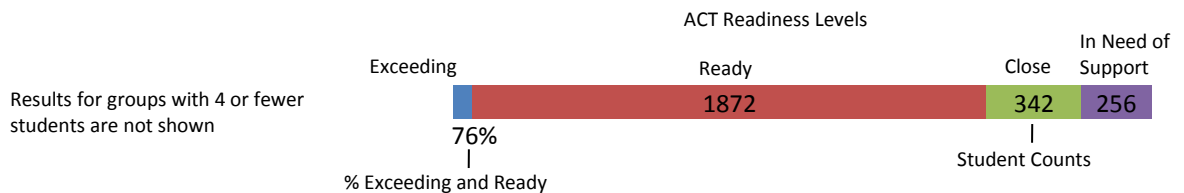
**READING**



**MATHEMATICS**



**WRITING**



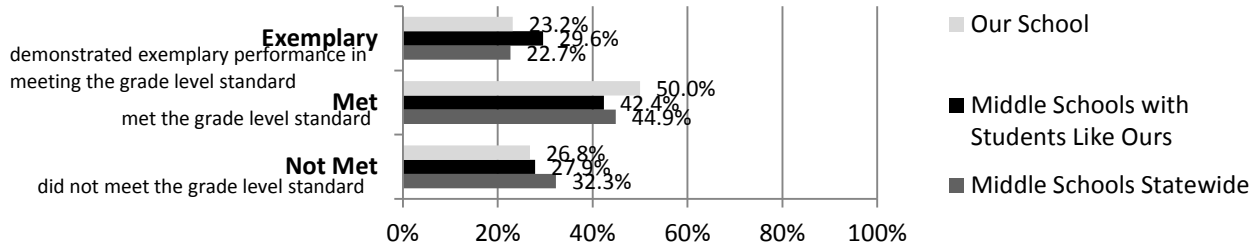
Abbreviations for Missing Data

- N/A-Not Applicable
- N/AV-Not Available
- N/C-Not Collected
- N/R-Not Reported
- I/S-Insufficient Sample

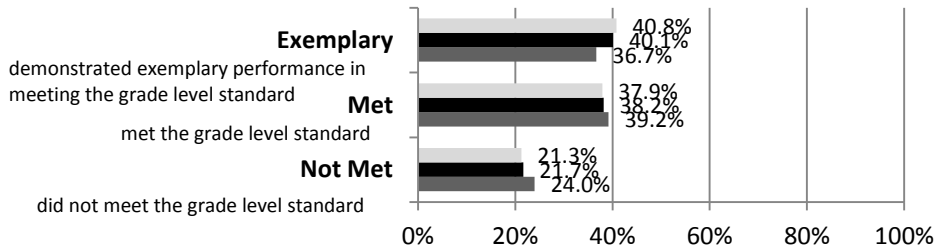
**KNOWLEDGE**

The SC Palmetto Assessment of State Standards (SCPASS) was given to students in grades 4 - 8 in Spring 2015. Students were assessed in the subject areas of Science and Social Studies.

**Science**



**Social Studies**



Science SCPASS		
Our School: Percent Met and Above for each grade level		
6th grade	7th grade	8th grade
77.7	80.7	67.7

Social Studies SCPASS		
Our School: Percent Met and Above for each grade level		
6th grade	7th grade	8th grade
82.7	75.7	86.7

Note: Results include SC-Alt assessment results.

Exemplary	<b>"Exemplary"</b> : student demonstrated exemplary performance in meeting the grade level standard.
Met	<b>"Met"</b> : student met the grade level standard.
Not Met	<b>"Not Met"</b> : student did not meet the grade level standard.

End of Course Tests		
Percent of tests with scores of 70 or above on:	Our School	Middle Schools with Students Like Ours
Algebra 1/Math for the Technologies 2	100.0	98.3
English 1	100	97
Biology 1	N/A	62.1
US History and the Constitution	N/A	64.9
All Subjects	100.0	97.5

Middle Schools with Students Like Ours are middle schools with poverty indices of no more than 5% above or below the index for the school.

Abbreviations for Missing Data

N/A-Not Applicable    N/AV-Not Available    N/C-Not Collected    N/R-Not Reported    I/S-Insufficient Sample

**OPPORTUNITIES**

	Our School	Change from Last Year	Middle Schools with students like ours
<b>Students (n = 746)</b>			
Percent of students participating in Medicaid, SNAP, or TANF; homeless, foster, or migrant students (poverty index)	58.8	Down from 68.0%	N/A
Percent of students (grade 7 & 8) enrolled in HS credit courses	79.7	Up from 31.6%	25.2
Attendance Rate	95.4	Down from 96.8%	95.9
With disabilities	12.2	Up from 11.6%	12.1
Out of school suspensions or expulsions for violent and/or criminal offenses	1.6	Up from 0.7%	0.5
Percentage of students served by gifted and talented programs	20.1	Up from 14.7%	23.7
Percentage of students retained	1.1	Up from 0.6%	0.6
Annual dropout rate	0.3	No change	0.0
<b>Teachers (n = 43)</b>			
Percentage of teachers with advanced degrees	60.5	Up from 59.0%	61.9
Percentage of teachers on continuing contract	51.2	Up from 46.2%	77.9
Teachers returning from previous year	N/A	N/A	85.9
Teacher attendance rate	94.0	Down from 96.8%	95.3
Average teacher salary*	\$43,349	Up 0.7%	\$47,360
Professional development days / teacher	8.1 days	Down from 13.9 days	11.0 days
Percentage of teacher vacancies for more than 9 weeks	0.0	N/A	0.5
<b>School</b>			
Principal's years at school	1.0	Down from 2.0	3.0
Student-teacher ratio in core subjects	24.7 to 1	Up from 23.8 to 1	23.3 to 1
Prime instructional time	88.6	Down from 93.1%	89.5
Opportunities in the arts	Good	No change	Excellent
Opportunities in foreign languages	Poor	N/A	Poor
AdvancEd (SACS) accreditation	Yes	No change	Yes
Parents attending conferences	100.0	Up from 99.4%	99.7
Character development program	Good	No change	Good
Avg. age of books / electronic media in the school library	6.0	N/A	13.4
Number of resources available per student in the school library media center	20.0	N/A	19.8
Bandwidth capacity per student	<25 Mbps	N/C	N/A
Percent of classrooms with wireless access	76-100%	N/C	N/A
District-issued learning devices per student	0.8	N/C	0.7
District-issued technology devices per teacher	1.1	N/C	1.7
Percentage of classes not taught by highly qualified teachers	1.0	Down from 11.2%	2.2
Dollars spent per pupil**	\$5,412	Down 11.9%	\$7,406
Percent of expenditures for instruction**	57.1	Up from 56.8%	62.2
Percent of expenditures for teachers' salaries**	58.2	Up from 57.4%	64.0

\* Includes current year teachers contracted for 190 days or more.

\*\* Prior year audited financial data are reported.

## Abbreviations for Missing Data

N/A-Not Applicable

N/AV-Not Available

N/C-Not Collected

N/R-Not Reported

I/S-Insufficient Sample

**OPPORTUNITIES****Evaluations by Teachers, Students, and Parents****Evaluations by Teachers, Students, and Parents**

	<b>Teachers</b>	<b>Students*</b>	<b>Parents*</b>
Number of surveys returned	37	149	96
Percent satisfied with learning environment	94.6	64.5	85.4
Percent satisfied with social and physical environment	94.6	66.9	83.3
Percent satisfied with school-home relations	97.3	82.1	67.3

\* Only students at the highest middle school grade and their parents were included.

**State Ratings History of School**

<b>Year</b>	<b>Absolute Rating</b>	<b>Growth Rating</b>
2014	Good	Average
2013	Good	Good
2012	N/A	N/A

Based on state law, schools will not be rated for state accountability purposes until Fall 2017.

**Additional Resources**

SC State Content Standards  
[Family-Friendly Guides to the SC Content Standards](#)  
[2014-15 Accountability Manual](#)  
[Report Card Data Files](#)  
[ESEA Data Files](#)

## Abbreviations for Missing Data

N/A-Not Applicable

N/AV-Not Available

N/C-Not Collected

N/R-Not Reported

I/S-Insufficient Sample