

Williamsburg County Magnet School of the Arts

710 Third Avenue
Kingstree, SC 29556



South Carolina State Report Card

State and federal laws require public schools to release report cards to the public each year. This year, the report card has been updated to reflect changes in reporting directed by the SC Education Oversight Committee. Schools will not be rated for state accountability purposes until Fall 2017 when the state will transition to a single accountability system. The following reports student performance in school year 2014-15.

Grades:	PK-6 Elementary	Principal:	Sarah Boyd
Enrollment:	382 students	Superintendent:	Carrie C. Brock
School Phone:	843-355-1506	Board Chair:	Rev. Alfred Darby
School Website:	http://www.edlinesites.net/pages/WCSM_MAGNET_SCHOOL_OF_THE_ARTS		



Profile of the SC Graduate

World Class Knowledge

- Rigorous standards in language arts and math for career and college readiness
- Multiple languages, science, technology, engineering, mathematics (STEM), arts and social sciences*

World Class Skills

- Creativity and innovation
- Critical thinking and problem solving
- Collaboration and teamwork
- Communication, information, media and technology
- Knowing how to learn

Life and Career Characteristics

- Integrity
- Self-direction
- Global perspective
- Perseverance
- Work ethic
- Interpersonal skills

* 21st Century core courses in Social Sciences include History, Geography, Economics, Government and Civics.

WORLD CLASS SKILLS & LIFE AND CAREER CHARACTERISTICS

Our school is helping all students develop the world class skills and life and career characteristics of the Profile of the Graduate by ...

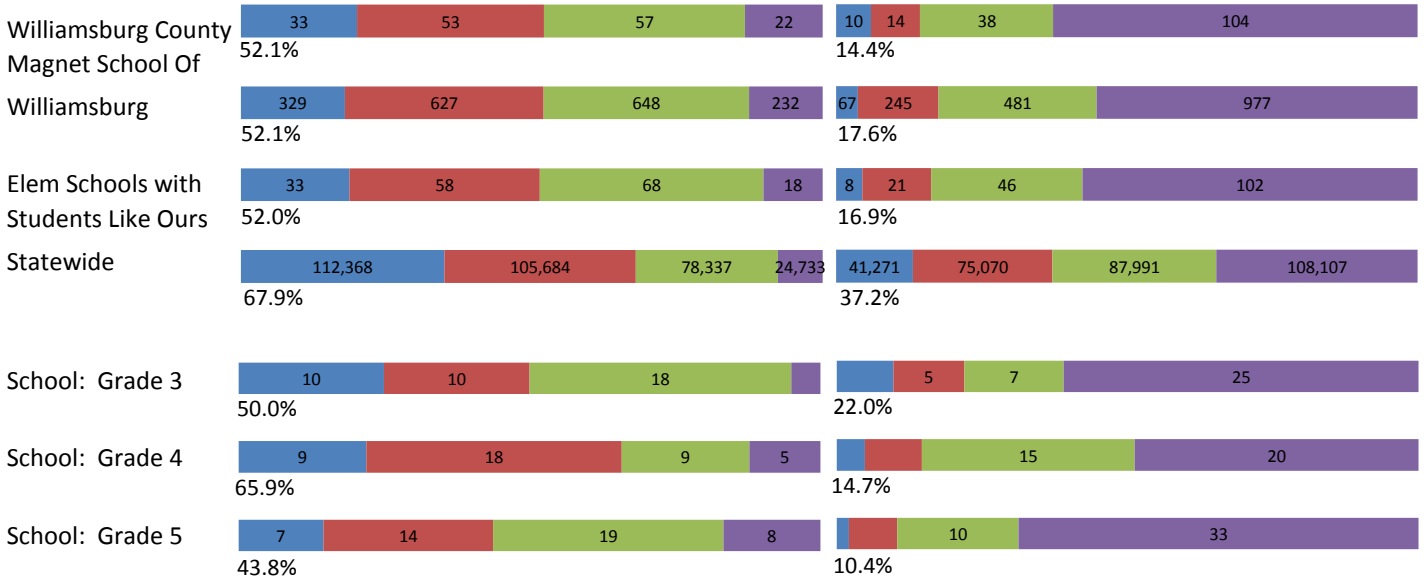
The mission of Williamsburg County Magnet School of the Arts is to provide the highest quality instruction in academic standards while integrating the arts into the core curriculum, so that each student can achieve his/her fullest potential, work to become a lifelong learner, and become a productive member of society. Williamsburg County Magnet School of the Arts' goal is to provide the highest quality instruction in academic standards while integrating the arts into the curriculum. Students in grades 5K-6 were served in the arts program. The total school enrollment, grades 4K-6, was 406. The components of the Arts program were: Dance, Visual Art, Drama, Vocal Ensemble, Instrumental Ensemble, Strings, and Piano. WCMSA provided a number of instructional programs for students who were not meeting their academic goals. These programs included Reading Recovery, through Clemson Extension, a Reading Coach, a CCEL Coach, and Classworks Curriculum lab. All lessons and activities were aligned with the State Standards. The Child Development Education Pilot Program (CDEPP) entered its' ninth year and showed much academic promise for our students. In addition, a full time guidance counselor continued to provide academic, social and personal assistance for the children. Other programs and activities that were provided to help build our students' character and prepare them to survive in a constantly changing and diverse world included: The Parenting Program, and three Fine Arts performances. Our Foster Grandparents Program, through the local Vital Aging Commission, allowed our older generation to pass knowledge and character to our younger generation. WCMSA would like to thank all our parents and community members for their effortless support that they have shown us this school year. Sarah E. Boyd Principal

KNOWLEDGE

The ACT Aspire assessment was given to students in grades 3-8 in Spring 2015. Students were assessed in the subject areas of Reading, English, Mathematics and Writing

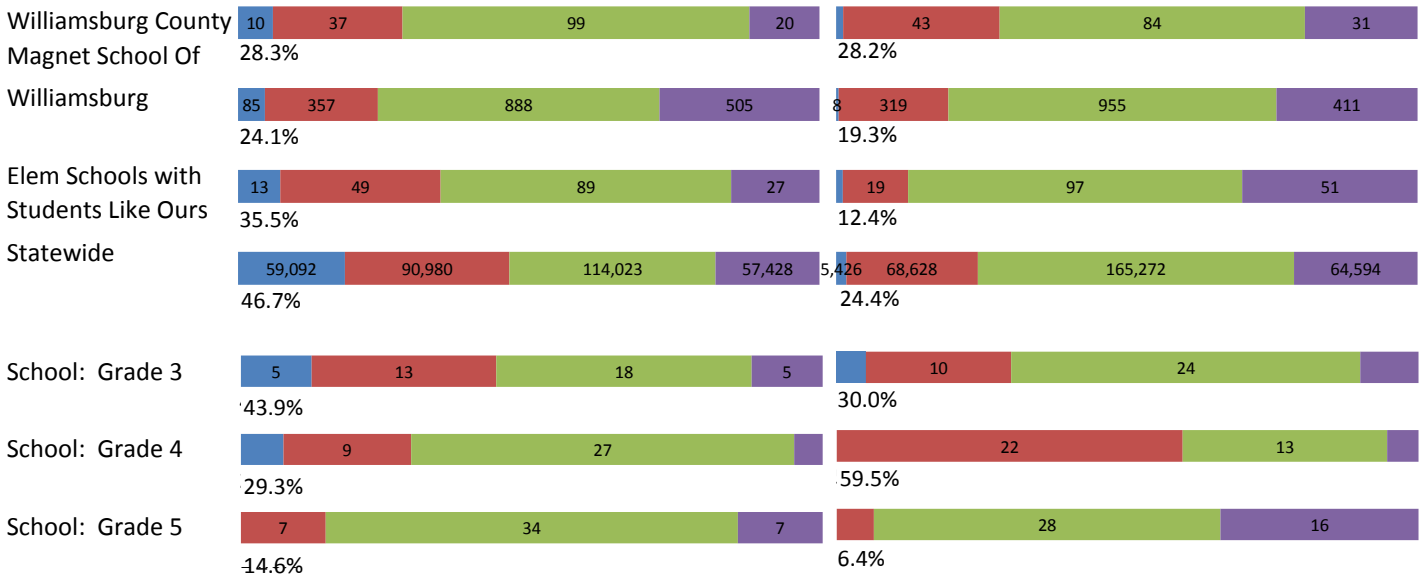
ENGLISH

READING



MATHEMATICS

WRITING



ACT Readiness Levels



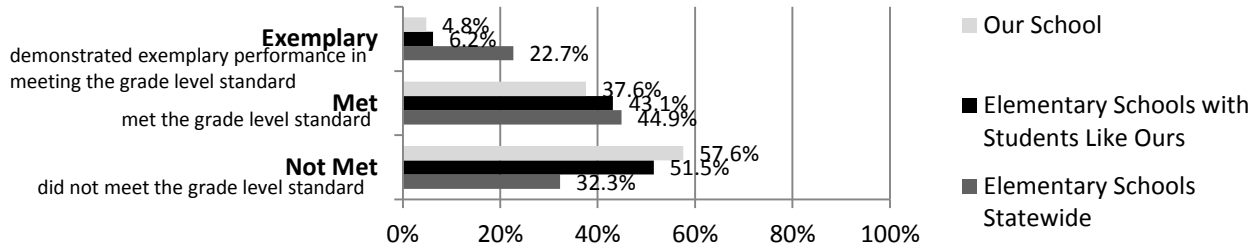
Abbreviations for Missing Data

- N/A-Not Applicable
- N/AV-Not Available
- N/C-Not Collected
- N/R-Not Reported
- I/S-Insufficient Sample

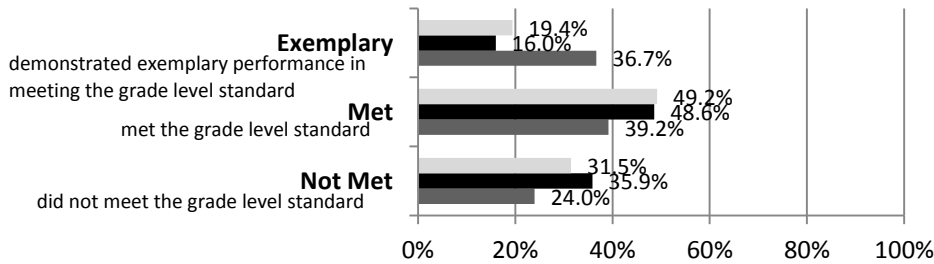
KNOWLEDGE

The SC Palmetto Assessment of State Standards (SCPASS) was given to students in grades 4 - 8 in Spring 2015. Students were assessed in the subject areas of Science and Social Studies.

Science



Social Studies



Science SCPASS	
Our School: Percent Met and Above for each grade level	
4th grade	5th grade
48.8	37.5
Social Studies SCPASS	
Our School: Percent Met and Above for each grade level	
4th grade	5th grade
77.5	58.3

Note: Results include SC-Alt assessment results.

Exemplary	"Exemplary": student demonstrated exemplary performance in meeting the grade level standard.
Met	"Met": student met the grade level standard.
Not Met	"Not Met": student did not meet the grade level standard.

Elementary Schools with Students Like Ours are elementary schools with poverty indices of no more than 5% above or below the index for the school.

Abbreviations for Missing Data

N/A-Not Applicable N/AV-Not Available N/C-Not Collected N/R-Not Reported I/S-Insufficient Sample

OPPORTUNITIES**For students to meet the profile of the SC Graduate**

	Our School	Change from Last Year	Elementary Schools with students like ours
Students (n = 382)			
Percent of students participating in Medicaid, SNAP, or TANF; homeless, foster, or migrant students (poverty index)	92.6	Down from 98.1%	N/A
Attendance Rate	93.9	Down from 94.1%	95.2
With disabilities	17.0	Up from 16.9%	12.9
Out of school suspensions or expulsions for violent and/or criminal offenses	0.0	Down from 0.5%	0.0
Percentage of students served by gifted and talented programs	7.4	Down from 8.0%	2.8
Percentage of students retained	4.5	Down from 5.3%	1.5
Teachers (n = 26)			
Percentage of teachers with advanced degrees	61.5	Down from 64.0%	58.3
Percentage of teachers on continuing contract	61.5	Down from 84.0%	72.1
Teachers returning from previous year	83.0	N/A	82.6
Teacher attendance rate	92.9	Down from 93.5%	94.9
Average teacher salary*	\$45,103	Down 0.2%	\$46,162
Professional development days / teacher	0.8 days	Down from 1.8 days	10.5 days
Percentage of teacher vacancies for more than 9 weeks	9.1	N/A	1.9
School			
Principal's years at school	8.0	Up from 5.0	4.0
Student-teacher ratio in core subjects	13.4 to 1	Down from 20.3 to 1	18.8 to 1
Prime instructional time	86.5	Down from 86.8%	89.1
Opportunities in the arts	Excellent	No change	Good
Opportunities in foreign languages	Poor	N/A	Poor
AdvancEd (SACS) accreditation	Yes	No change	Yes
Parents attending conferences	98.4	Up from 17.3%	100.0
Character development program	Excellent	Up from Fair	Excellent
Avg. age of books / electronic media in the school library	20.0	N/A	15.8
Number of resources available per student in the school library media center	27.7	N/A	32.7
Bandwidth capacity per student	<25 Mbps	N/C	N/A
Percent of classrooms with wireless access	76-100%	N/C	N/A
District-issued learning devices per student	0.2	N/C	0.8
District-issued technology devices per teacher	1.8	N/C	2.1
Percentage of classes not taught by highly qualified teachers	18.0	Up from 3.8%	0.0
Dollars spent per pupil**	\$7,929	Up 0.4%	\$8,468
Percent of expenditures for instruction**	61.8	Up from 61.7%	65.0
Percent of expenditures for teachers' salaries**	62.3	Down from 62.6%	66.4

* Includes current year teachers contracted for 190 days or more.

** Prior year audited financial data are reported.

Abbreviations for Missing Data

N/A-Not Applicable

N/AV-Not Available

N/C-Not Collected

N/R-Not Reported

I/S-Insufficient Sample

OPPORTUNITIES**Evaluations by Teachers, Students, and Parents****Evaluations by Teachers, Students, and Parents**

	Teachers	Students*	Parents*
Number of surveys returned	31	31	12
Percent satisfied with learning environment	87.1	71.0	91.7
Percent satisfied with social and physical environment	96.8	75.1	91.7
Percent satisfied with school-home relations	96.8	75.0	84.6

* Only students at the highest elementary school grade and their parents were included.

State Ratings History of School

Year	Absolute Rating	Growth Rating
2014	Average	Below Average
2013	Average	Average
2012	Below Average	Average

Based on state law, schools will not be rated for state accountability purposes until Fall 2017.

Additional Resources

SC State Content Standards
[Family-Friendly Guides to the SC Content Standards](#)
[2014-15 Accountability Manual](#)
[Report Card Data Files](#)
[ESEA Data Files](#)

Abbreviations for Missing Data

N/A-Not Applicable

N/AV-Not Available

N/C-Not Collected

N/R-Not Reported

I/S-Insufficient Sample