

## Pleasant Hill Elementary School

127 Schoolhouse Drive  
Hemingway, SC 29554



# South Carolina State Report Card

State and federal laws require public schools to release report cards to the public each year. This year, the report card has been updated to reflect changes in reporting directed by the SC Education Oversight Committee. Schools will not be rated for state accountability purposes until Fall 2017 when the state will transition to a single accountability system. The following reports student performance in school year 2014-15.

<b>Grades:</b>	PK-5 Elementary	<b>Principal:</b>	William T. Graham
<b>Enrollment:</b>	357 students	<b>Superintendent:</b>	Dr. H. Randall Dozier
<b>School Phone:</b>	843 558-9417	<b>Board Chair:</b>	Mr. Jim Dumm
<b>School Website:</b>	<a href="http://www.phe.gcsd.k12.sc.us/">http://www.phe.gcsd.k12.sc.us/</a>		



### Profile of the SC Graduate

#### World Class Knowledge

- Rigorous standards in language arts and math for career and college readiness
- Multiple languages, science, technology, engineering, mathematics (STEM), arts and social sciences\*

#### World Class Skills

- Creativity and innovation
- Critical thinking and problem solving
- Collaboration and teamwork
- Communication, information, media and technology
- Knowing how to learn

#### Life and Career Characteristics

- Integrity
- Self-direction
- Global perspective
- Perseverance
- Work ethic
- Interpersonal skills

\* 21st Century core courses in Social Sciences include History, Geography, Economics, Government and Civics.

### WORLD CLASS SKILLS & LIFE AND CAREER CHARACTERISTICS

*Our school is helping all students develop the world class skills and life and career characteristics of the Profile of the Graduate by ...*

“Our school is helping all students develop the world class skills and life and career characteristics of the Profile of the South Carolina Graduate by...

Pleasant Hill Elementary School is helping all student develop the skills and characteristics of the Profile of the South Carolina Graduate by providing a continuously evolving and challenging curriculum based on current state standards, promoting personal growth and goal setting, and integrating technologies, collaboration, critical thinking, problem solving, creativity, and innovation into daily instruction. Consequently, our school works collaboratively with parents, students, and community members to create a safe, caring, and positive learning environment.

We are diligent to ensure that students receive instruction based on effective teaching methodologies. In the area of literacy, this includes implementing predictable structures to promote independence and active engagement. Literacy components include: read to self, read to someone, listen to reading, work on writing, and word work. Students in all grades have access to limitless reading materials of all genres in their classrooms and the media center, including the 100 Book Challenge reading program in grades K-3.

In the areas of math, science, and social studies, teachers connect the real world to daily instruction by fostering critical thinking, problem solving, and innovation. Students participate in hands on activities to include games and interactive activities. Students work individually, collectively, and collaboratively in groups on project-based activities. They are taught to research using media and technology, to organize and structure information, and to share information using interpersonal communications and various presentation formats. Technology is a key component across all contents as teachers continually improve in the area of technology integration. All students make use of two computer labs, ample laptop carts, and interactive white boards on a daily basis.

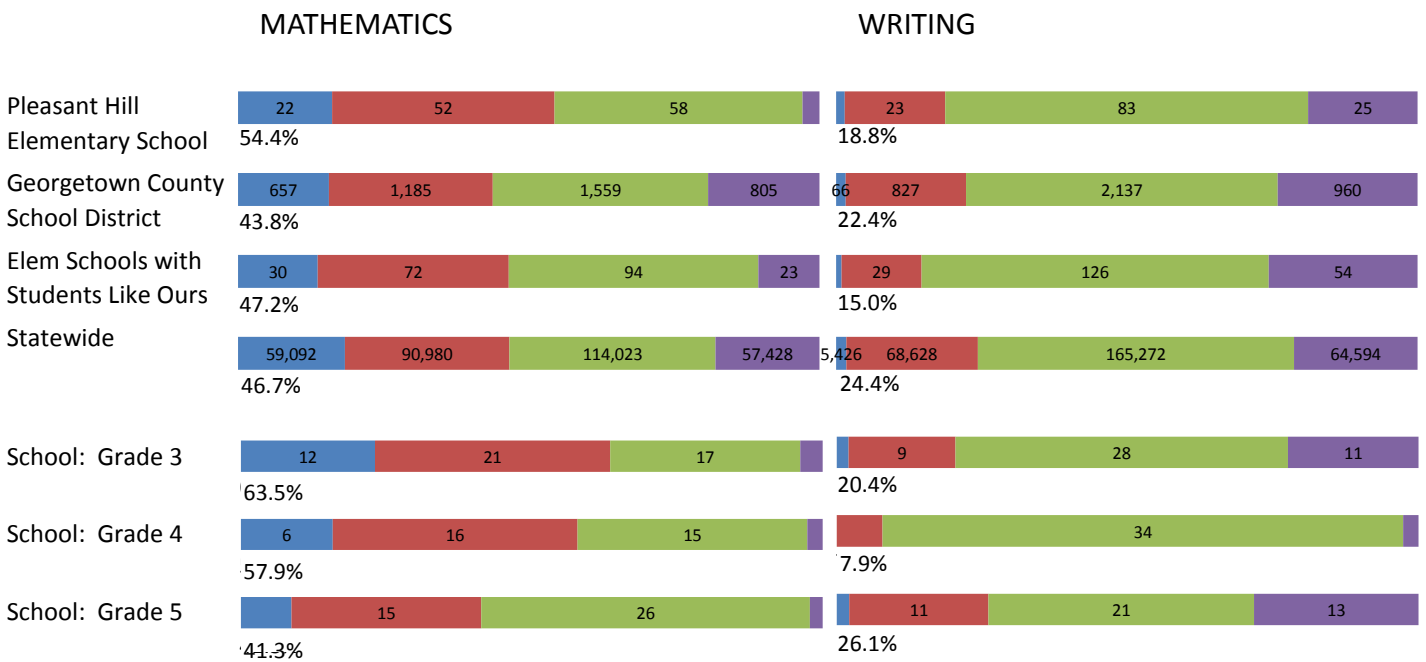
Many of our students have talents in the areas of art, music, and physical education. Enrichment classes are provided to students in grades k-5 to assist in developing these talents and interests. Guidance and media classes are provided to students. Partnerships include First Tee of the Grand Strand, the YMCA, Georgetown Museum, and See Wee Nature Center. Pleasant Hill Elementary School was once again recognized as a Title I Reward School for Achievement. We will continue our mission, providing educational programs that require students to meet high academic standards and preparing students to be responsible citizens and lifelong learners.

W. Teddy Graham, Principal

A. Scott Poston, SIC Chair

**KNOWLEDGE**

The ACT Aspire assessment was given to students in grades 3-8 in Spring 2015. Students were assessed in the subject areas of Reading, English, Mathematics and Writing



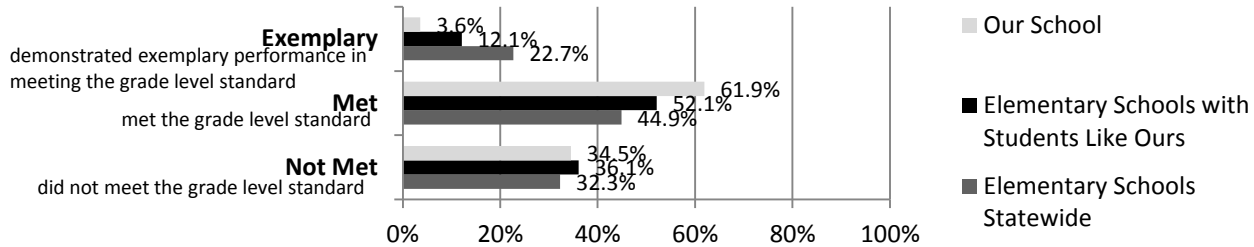
Abbreviations for Missing Data

- N/A-Not Applicable
- N/AV-Not Available
- N/C-Not Collected
- N/R-Not Reported
- I/S-Insufficient Sample

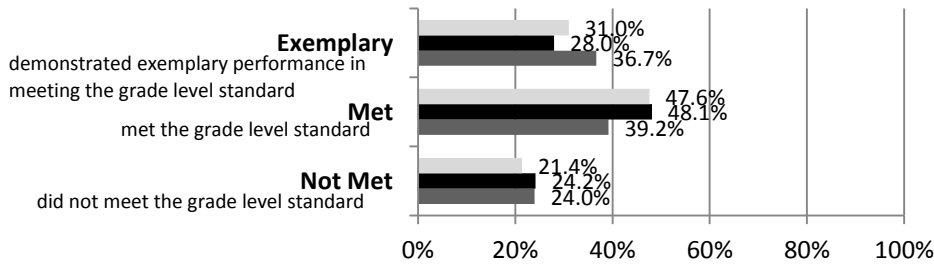
**KNOWLEDGE**

The SC Palmetto Assessment of State Standards (SCPASS) was given to students in grades 4 - 8 in Spring 2015. Students were assessed in the subject areas of Science and Social Studies.

**Science**



**Social Studies**



**Science SCPASS**

Our School: Percent Met and Above for each grade level	
4th grade	5th grade
68.4	63.0

**Social Studies SCPASS**

Our School: Percent Met and Above for each grade level	
4th grade	5th grade
97.4	63.0

Note: Results include SC-Alt assessment results.

Exemplary	"Exemplary": student demonstrated exemplary performance in meeting the grade level standard.
Met	"Met": student met the grade level standard.
Not Met	"Not Met": student did not meet the grade level standard.

Elementary Schools with Students Like Ours are elementary schools with poverty indices of no more than 5% above or below the index for the school.

Abbreviations for Missing Data

N/A-Not Applicable    N/AV-Not Available    N/C-Not Collected    N/R-Not Reported    I/S-Insufficient Sample

**OPPORTUNITIES**

**For students to meet the profile of the SC Graduate**

	Our School	Change from Last Year	Elementary Schools with students like ours
<b>Students (n = 357)</b>			
Percent of students participating in Medicaid, SNAP, or TANF; homeless, foster, or migrant students (poverty index)	80.8	Down from 87.1%	N/A
Attendance Rate	96.1	Down from 96.3%	95.5
With disabilities	9.2	Down from 10.5%	13.7
Out of school suspensions or expulsions for violent and/or criminal offenses	0.0	Down from 0.3%	0.0
Percentage of students served by gifted and talented programs	5.7	Down from 8.5%	5.8
Percentage of students retained	1.9	No change	1.5
<b>Teachers (n = 28)</b>			
Percentage of teachers with advanced degrees	64.3	Down from 70.4%	61.3
Percentage of teachers on continuing contract	89.3	Up from 85.2%	80.6
Teachers returning from previous year	92.2	Up from 89.8%	87.9
Teacher attendance rate	95.6	No change	95.0
Average teacher salary*	\$49,930	Down 0.3%	\$48,261
Professional development days / teacher	15.6 days	Down from 22.9 days	10.3 days
Percentage of teacher vacancies for more than 9 weeks	0.0	N/A	0.5
<b>School</b>			
Principal's years at school	10.0	Up from 9.0	4.0
Student-teacher ratio in core subjects	14.6 to 1	Down from 15.2 to 1	20.0 to 1
Prime instructional time	90.1	Up from 87.2%	89.5
Opportunities in the arts	Good	No change	Good
Opportunities in foreign languages	Poor	N/A	Poor
AdvancEd (SACS) accreditation	Yes	No change	Yes
Parents attending conferences	100.0	Up from 98.8%	100.0
Character development program	Good	No change	Excellent
Avg. age of books / electronic media in the school library	17.0	N/A	14.8
Number of resources available per student in the school library media center	29.5	N/A	25.5
Bandwidth capacity per student	<25 Mbps	N/C	N/A
Percent of classrooms with wireless access	76-100%	N/C	N/A
District-issued learning devices per student	1.1	N/C	0.7
District-issued technology devices per teacher	1.0	N/C	2.0
Percentage of classes not taught by highly qualified teachers	0.0	No change	0.0
Dollars spent per pupil**	\$10,220	Up 3.0%	\$8,010
Percent of expenditures for instruction**	56.6	Up from 56.2%	65.7
Percent of expenditures for teachers' salaries**	57.9	Up from 56.9%	67.0

\* Includes current year teachers contracted for 190 days or more.

\*\* Prior year audited financial data are reported.

Abbreviations for Missing Data

N/A-Not Applicable

N/AV-Not Available

N/C-Not Collected

N/R-Not Reported

I/S-Insufficient Sample

**OPPORTUNITIES**

**Evaluations by Teachers, Students, and Parents**

**Evaluations by Teachers, Students, and Parents**

	<b>Teachers</b>	<b>Students*</b>	<b>Parents*</b>
Number of surveys returned	30	48	41
Percent satisfied with learning environment	100.0	97.9	95.1
Percent satisfied with social and physical environment	100.0	89.3	87.8
Percent satisfied with school-home relations	100.0	95.8	75.0

\* Only students at the highest elementary school grade and their parents were included.

**State Ratings History of School**

<b>Year</b>	<b>Absolute Rating</b>	<b>Growth Rating</b>
2014	Good	At-Risk
2013	Good	Below Average
2012	Good	Average

Based on state law, schools will not be rated for state accountability purposes until Fall 2017.

**Additional Resources**

- SC State Content Standards
- [Family-Friendly Guides to the SC Content Standards](#)
- [2014-15 Accountability Manual](#)
- [Report Card Data Files](#)
- [ESEA Data Files](#)

Abbreviations for Missing Data

N/A-Not Applicable    N/AV-Not Available    N/C-Not Collected    N/R-Not Reported    I/S-Insufficient Sample