

Pritchardville Elementary

9447 Evan Way
Bluffton, SC 29910



South Carolina State Report Card

State and federal laws require public schools to release report cards to the public each year. This year, the report card has been updated to reflect changes in reporting directed by the SC Education Oversight Committee. Schools will not be rated for state accountability purposes until Fall 2017 when the state will transition to a single accountability system. The following reports student performance in school year 2014-15.

Grades:	PK-5 Elementary	Principal:	Brenda Blue
Enrollment:	834 students	Superintendent:	Dr. Jeffrey Moss
School Phone:	843-707-0500	Board Chair:	Bill Evans
School Website:	http://pve.beaufort.k12.sc.us/		



Profile of the SC Graduate

World Class Knowledge

- Rigorous standards in language arts and math for career and college readiness
- Multiple languages, science, technology, engineering, mathematics (STEM), arts and social sciences*

World Class Skills

- Creativity and innovation
- Critical thinking and problem solving
- Collaboration and teamwork
- Communication, information, media and technology
- Knowing how to learn

Life and Career Characteristics

- Integrity
- Self-direction
- Global perspective
- Perseverance
- Work ethic
- Interpersonal skills

* 21st Century core courses in Social Sciences include History, Geography, Economics, Government and Civics.

WORLD CLASS SKILLS & LIFE AND CAREER CHARACTERISTICS

Our school is helping all students develop the world class skills and life and career characteristics of the Profile of the Graduate by ...

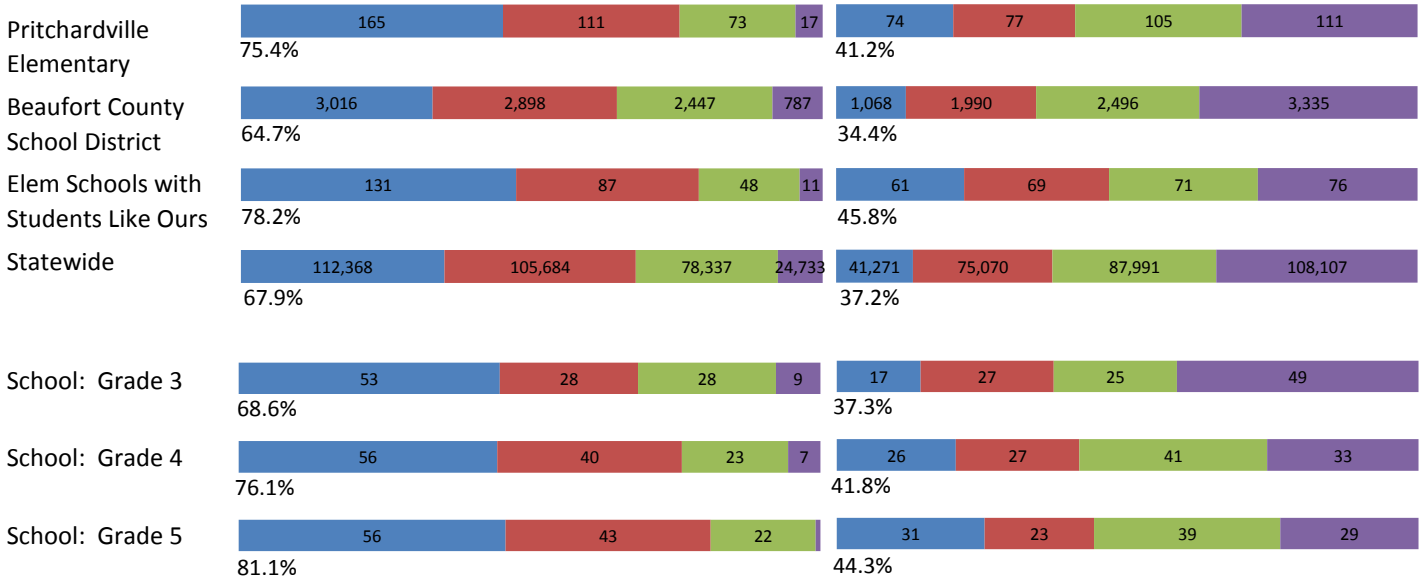
Pritchardville Elementary School serves a diverse population of over 850 students in grade Pre-K thru 5th grades. Fifty One percent of the student population qualified for free or reduced lunch. We are a school-of-choice that provides curriculum from the Advanced Mathematics Engineering and Science (AMES) Program in grades 3 thru 5. The scope of project based learning has been expanded to allow all students K-5 receive direct instruction in engineering as a component of our STEM efforts that follow the engineering cycle. Pritchardville Elementary School offers a menu of value added enrichment programs throughout the school year for our students. A few examples include: 1:1 iPad initiative for students in grades 3-5. K-5 Engineering Expo, AMES Showcase Nights, ESOL Books and Breakfast Program, Chorus, School wide Art Show, Watch D.O.G.S. Dads Program, Sammy Reading Challenge, WPVES News Show, Garden Club, Health Club, Scholars Academy, Sammy's Snack Club, Student Ambassadors, and Mentoring Program. Pritchardville Elementary School earned an absolute rating of Excellent and a Growth Rating of Good for 2013-2014 school year. We received a Grade A rating via the ESEA/Federal Accountability Rating System. Pritchardville Elementary School received recognition as a Palmetto Gold Award Winner for overall academic achievement for the 2011-2012, 2012-2013, and 2013-2014 school years. Pritchardville Elementary School has been recognized by the State of South Carolina for our Positive Behavior Interventions and Support (PBIS) program and tiered behavior supports for students. PVES students are expected to display REACH (Respect, Effort, positive Attitude, Cooperate with others, and show Honesty to everyone) behaviors in a daily environment at school. Students in Tier I have the opportunity to earn a REACH award each quarter as well as receive a quarterly incentive. Check-in and Check-out support is provided for Tier II students. Our communication systems, Weekly EBLASTS, Principal's BLOG, Grade Level and School Newsletters, Principals Coffees, Turtle Talk, and our PVES school website ensure that all stakeholders have accurate and updated information regarding all aspects of our school. The sources of school data for the needs analysis included information obtained through NWEA, Test View, and PowerSchool. Current Measures of Academic Progress (MAP) assessments, Fountas and Pinnell (F&P) Reading Assessment, and 2013 Palmetto Assessment of State Standards (PASS) data were analyzed as part of our ongoing efforts for continuous improvement and growth. MAP analysis for subgroups (Black, Hispanic, White) in reading and math indicated a need for tiered support system and targeted interventions in an effort to reduce an achievement gap. As a result, we have implemented response to intervention program that provides targeted supports and weekly progress monitoring for all students in Quartile 1 and Quartile 2 in both reading and math. Literacy Intervention Groups (approximately three students per group) meet for 20 minutes per

KNOWLEDGE

The ACT Aspire assessment was given to students in grades 3-8 in Spring 2015. Students were assessed in the subject areas of Reading, English, Mathematics and Writing

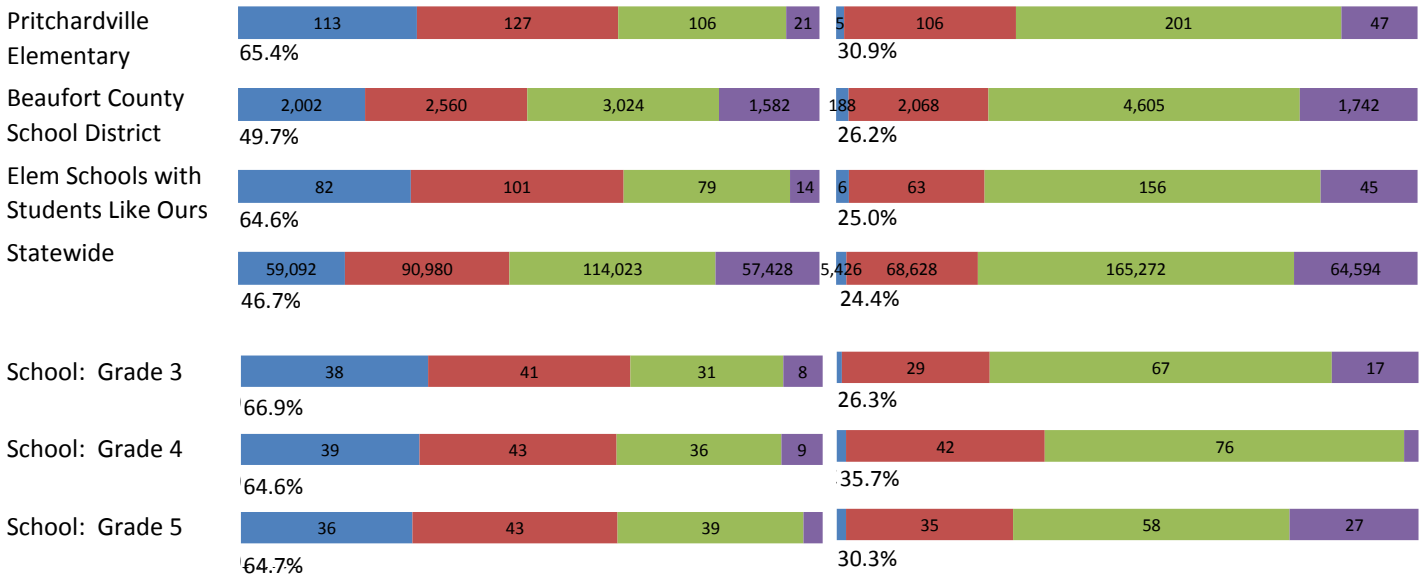
ENGLISH

READING



MATHEMATICS

WRITING



ACT Readiness Levels



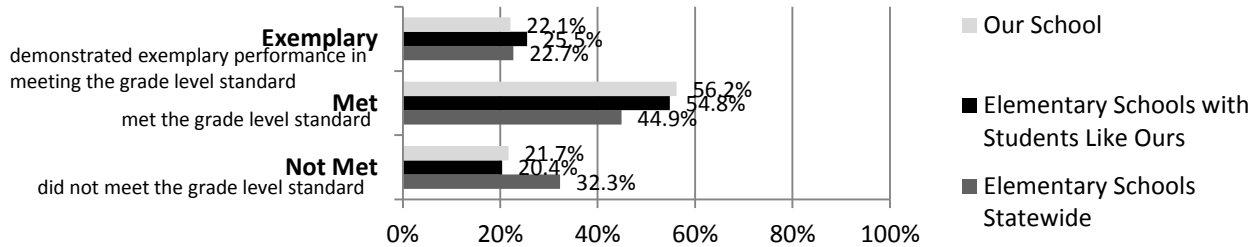
Abbreviations for Missing Data

- N/A-Not Applicable
- N/AV-Not Available
- N/C-Not Collected
- N/R-Not Reported
- I/S-Insufficient Sample

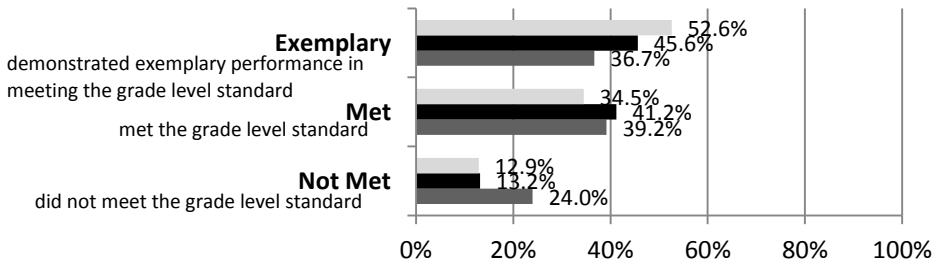
KNOWLEDGE

The SC Palmetto Assessment of State Standards (SCPASS) was given to students in grades 4 - 8 in Spring 2015. Students were assessed in the subject areas of Science and Social Studies.

Science



Social Studies



Science SCPASS	
Our School: Percent Met and Above for each grade level	
4th grade	5th grade
81.1	75.4
Social Studies SCPASS	
Our School: Percent Met and Above for each grade level	
4th grade	5th grade
89.0	85.2

Note: Results include SC-Alt assessment results.

Exemplary	"Exemplary" : student demonstrated exemplary performance in meeting the grade level standard.
Met	"Met" : student met the grade level standard.
Not Met	"Not Met" : student did not meet the grade level standard.

Elementary Schools with Students Like Ours are elementary schools with poverty indices of no more than 5% above or below the index for the school.

Abbreviations for Missing Data

N/A-Not Applicable N/AV-Not Available N/C-Not Collected N/R-Not Reported I/S-Insufficient Sample

OPPORTUNITIES**For students to meet the profile of the SC Graduate**

	Our School	Change from Last Year	Elementary Schools with students like ours
Students (n = 834)			
Percent of students participating in Medicaid, SNAP, or TANF; homeless, foster, or migrant students (poverty index)	46.2	Down from 55.7%	N/A
Attendance Rate	96.0	Down from 96.7%	96.5
With disabilities	5.7	Down from 5.9%	10.9
Out of school suspensions or expulsions for violent and/or criminal offenses	0.0	No change	0.0
Percentage of students served by gifted and talented programs	12.4	Down from 14.6%	14.0
Percentage of students retained	0.4	Down from 1.4%	0.9
Teachers (n = 54)			
Percentage of teachers with advanced degrees	64.8	Down from 67.3%	63.3
Percentage of teachers on continuing contract	50.0	Down from 55.1%	82.6
Teachers returning from previous year	80.1	Down from 80.8%	89.8
Teacher attendance rate	93.1	Down from 95.4%	94.5
Average teacher salary*	\$47,062	Down 1.1%	\$48,760
Professional development days / teacher	2.8 days	Down from 3.9 days	11.9 days
Percentage of teacher vacancies for more than 9 weeks	0.0	N/A	0.4
School			
Principal's years at school	1.5	Up from 1.0	4.0
Student-teacher ratio in core subjects	23.2 to 1	Up from 20.8 to 1	21.2 to 1
Prime instructional time	87.5	Down from 90.3%	89.5
Opportunities in the arts	Good	No change	Good
Opportunities in foreign languages	Poor	N/A	Poor
AdvancEd (SACS) accreditation	Yes	No change	Yes
Parents attending conferences	100.0	No change	100.0
Character development program	Excellent	No change	Excellent
Avg. age of books / electronic media in the school library	10.0	N/A	12.3
Number of resources available per student in the school library media center	13.9	N/A	18.0
Bandwidth capacity per student	<25 Mbps	N/C	N/A
Percent of classrooms with wireless access	76-100%	N/C	N/A
District-issued learning devices per student	0.8	N/C	1.6
District-issued technology devices per teacher	2.6	N/C	1.7
Percentage of classes not taught by highly qualified teachers	21.1	Up from 6.2%	0.0
Dollars spent per pupil**	\$6,063	Down 7.2%	\$7,272
Percent of expenditures for instruction**	70.8	No change	67.7
Percent of expenditures for teachers' salaries**	71.6	Up from 71.3%	69.0

* Includes current year teachers contracted for 190 days or more.

** Prior year audited financial data are reported.

Abbreviations for Missing Data

N/A-Not Applicable

N/AV-Not Available

N/C-Not Collected

N/R-Not Reported

I/S-Insufficient Sample

OPPORTUNITIES**Evaluations by Teachers, Students, and Parents****Evaluations by Teachers, Students, and Parents**

	Teachers	Students*	Parents*
Number of surveys returned	41	127	93
Percent satisfied with learning environment	95.1	89.8	91.4
Percent satisfied with social and physical environment	92.6	81.8	85.8
Percent satisfied with school-home relations	97.6	91.3	66.4

* Only students at the highest elementary school grade and their parents were included.

State Ratings History of School

Year	Absolute Rating	Growth Rating
2014	Excellent	Good
2013	Excellent	Good
2012	Excellent	Good

Based on state law, schools will not be rated for state accountability purposes until Fall 2017.

Additional Resources

SC State Content Standards
[Family-Friendly Guides to the SC Content Standards](#)
[2014-15 Accountability Manual](#)
[Report Card Data Files](#)
[ESEA Data Files](#)

Abbreviations for Missing Data

N/A-Not Applicable

N/AV-Not Available

N/C-Not Collected

N/R-Not Reported

I/S-Insufficient Sample