



State and federal laws require public schools to release report cards to the public each year. This year, the report card has been updated to reflect changes in reporting directed by the SC Education Oversight Committee. Schools will not be rated for state accountability purposes until Fall 2017 when the state will transition to a single accountability system. The following reports student performance in school year 2014-15.

<b>Grades:</b>	PK-12 District	<b>Superintendent:</b>	Carrie C. Brock
<b>Enrollment:</b>	4,423 students	<b>Board Chair:</b>	Rev. Alfred Darby
<b>District Phone:</b>	843-355-5571		
<b>District Website:</b>	<a href="http://www.wcsd.k12.sc.us/pages/WCSD">http://www.wcsd.k12.sc.us/pages/WCSD</a>		



## Profile of the SC Graduate

### World Class Knowledge

- Rigorous standards in language arts and math for career and college readiness
- Multiple languages, science, technology, engineering, mathematics (STEM), arts and social sciences\*

### World Class Skills

- Creativity and innovation
- Critical thinking and problem solving
- Collaboration and teamwork
- Communication, information, media and technology
- Knowing how to learn

### Life and Career Characteristics

- Integrity
- Self-direction
- Global perspective
- Perseverance
- Work ethic
- Interpersonal skills

\* 21st Century core courses in Social Sciences include History, Geography, Economics, Government and Civics.

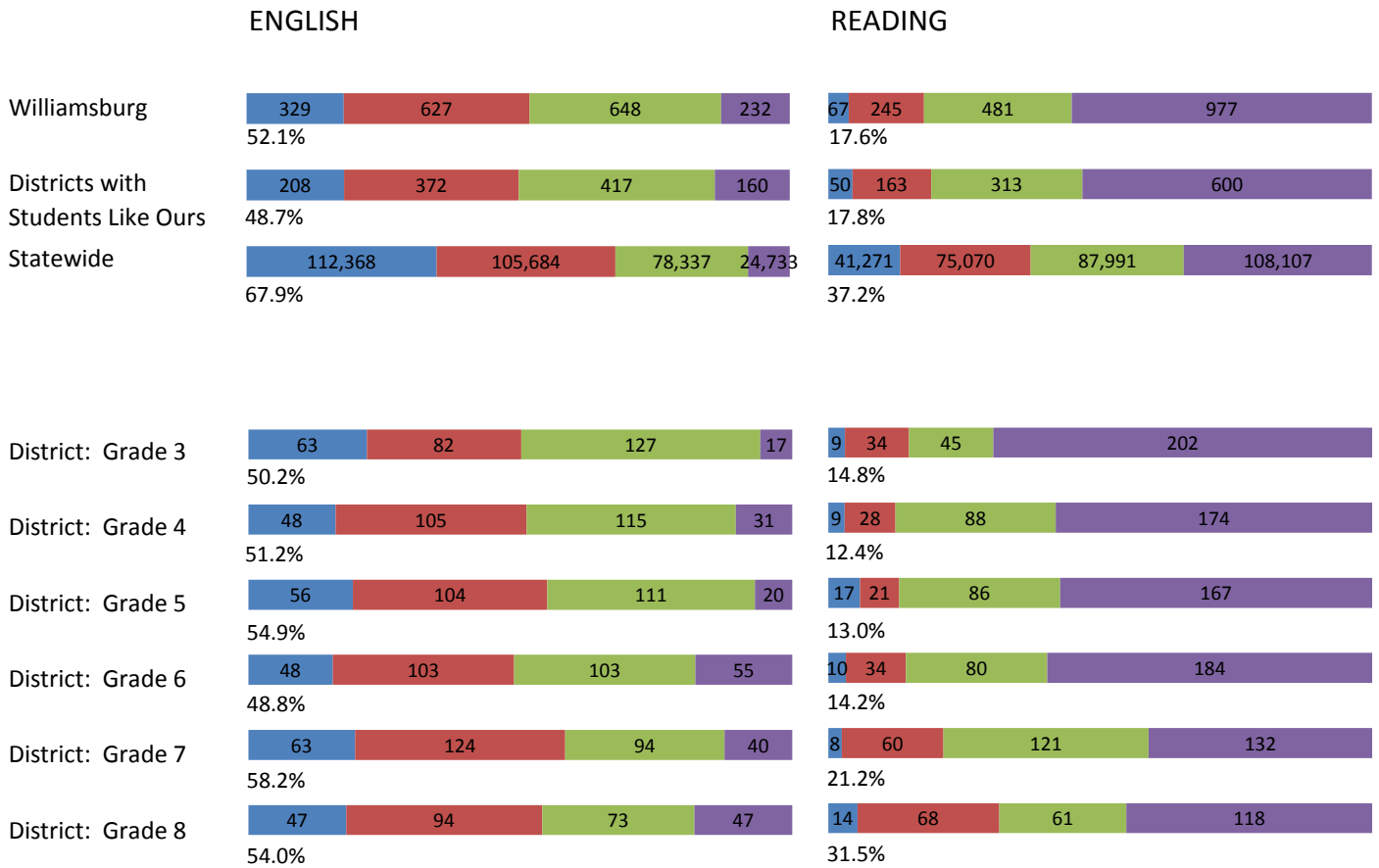
## WORLD CLASS SKILLS & LIFE AND CAREER CHARACTERISTICS

*Our district is helping all students develop the world class skills and life and career characteristics of the Profile of the Graduate by ...*

Williamsburg County School District's faculty and staff have worked diligently this year to provide high quality educational services to every student in the district. WCSD has as its primary goal, a commitment to increasing student achievement. Alternative programs (HOPE Academy) are offered at the middle and high school levels to students who are not successful in the traditional school setting. The District also offers afterschool programs, tutoring and credit recovery options to help students in need of additional assistance. Professional Development for teachers has emphasized engaging students in rigorous integration of English Language Arts (ELA) into the content areas, and across all disciplines. In all academic areas, we are committed to ensuring academic success for all students. The use of assessment data helps to design classroom instruction that is responsive to students' academic needs individually. In spite of economic hardships, our students continue to excel and earned perfect scores on the 2014 PASS Assessments and 2014 Reading and Math Assessments. Several elementary and middle school students were selected to participate in the 2015 Duke Talent Search Program, which provides access to online curriculum lessons in writing, math, science, and architecture. Several 11th graders received WorkKeys Certificates, indicating their readiness for the workplace. The graduation rate of 84 percent is an indicator that our district has remained dedicated to providing the skills students need for the 21st Century, college, careers and success in life. Interest in the Science, Technology, Engineering and Mathematics School (STEMS) program is at an all-time high as it continues to expand at the high school grade levels. The Gifted and Talented Academic and Artistic programs are fine examples of some of the innovative programs that have accelerated our students' performance. WCSD continues to work on reexamining its Technology Plan with one to one computer take home technology devices such as lap tops will be placed in the hands of elementary, middle and high school students. The use of instructional technology leads our efforts for ongoing professional development for our teachers to ensure that students are using these tools most effectively in order to become college and career ready. Williamsburg County School District is committed to excellence and we are determined to accelerate academic progress. Thank you for supporting our school district, our students and our educators. Carrie C. Brock Interim Superintendent

**KNOWLEDGE**

The ACT Aspire assessment was given to students in grades 3-8 in Spring 2015. Students were assessed in the subject areas of Reading, English, Mathematics and Writing



Abbreviations for Missing Data

N/A-Not Applicable

N/AV-Not Available

N/C-Not Collected

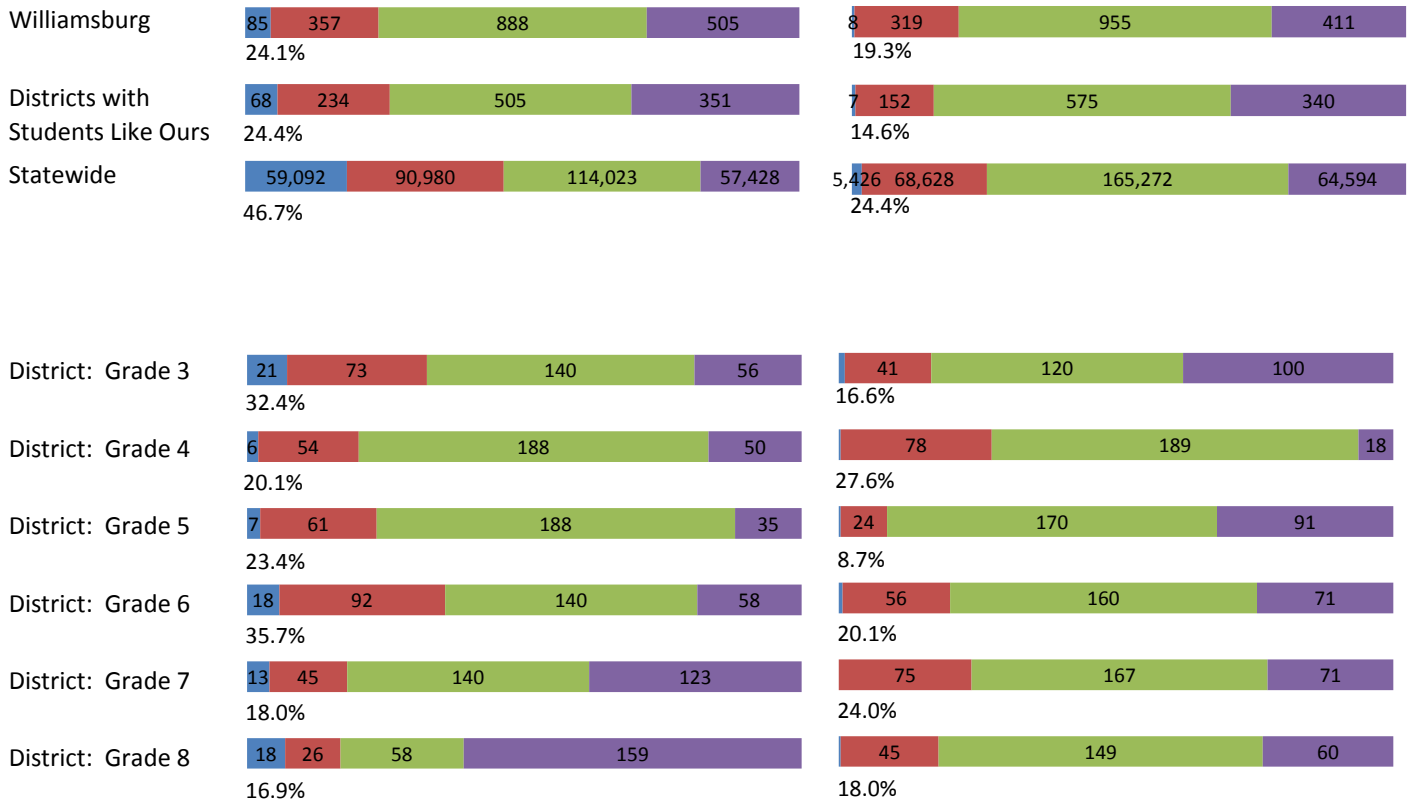
N/R-Not Reported

I/S-Insufficient Sample

**KNOWLEDGE**

**MATHEMATICS**

**WRITING**



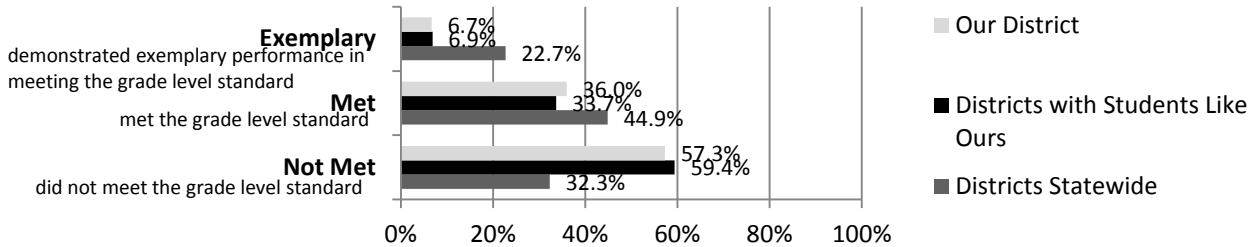
Abbreviations for Missing Data

- N/A-Not Applicable
- N/AV-Not Available
- N/C-Not Collected
- N/R-Not Reported
- I/S-Insufficient Sample

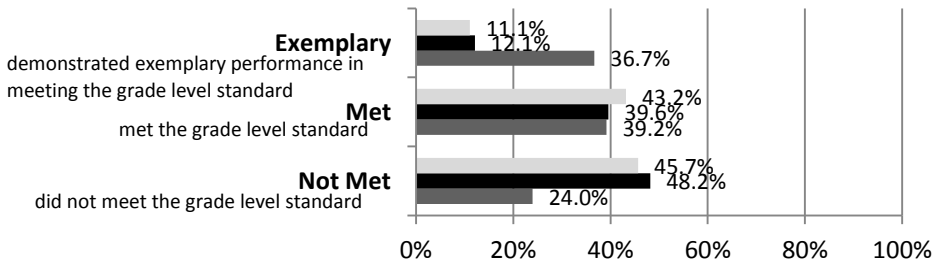
**KNOWLEDGE**

The SC Palmetto Assessment of State Standards (SCPASS) was given to students in grades 4 - 8 in Spring 2015. Students were assessed in the subject areas of Science and Social Studies.

**Science**



**Social Studies**



**Science SCPASS**

Our District: Percent Met and Above for each grade level

4th grade	5th grade	6th grade	7th grade	8th grade
41.3	40.5	36.4	47.0	45.0

**Social Studies SCPASS**

Our District: Percent Met and Above for each grade level

4th grade	5th grade	6th grade	7th grade	8th grade
66.7	49.5	53.6	47.0	53.5

Note: Results include SC-Alt assessment results.

Exemplary	<b>"Exemplary"</b> : student demonstrated exemplary performance in meeting the grade level standard.
Met	<b>"Met"</b> : student met the grade level standard.
Not Met	<b>"Not Met"</b> : student did not meet the grade level standard.

Abbreviations for Missing Data

N/A-Not Applicable    N/AV-Not Available    N/C-Not Collected    N/R-Not Reported    I/S-Insufficient Sample

**KNOWLEDGE**

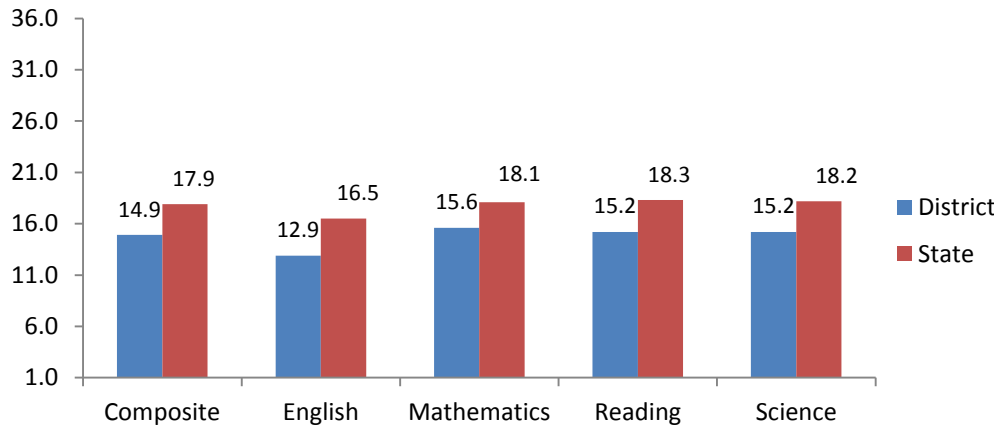
**End of Course Tests**

Percent of tests with scores of 70 or above on:	Our District	Districts with Students Like Ours	State
Algebra 1/Math for the Technologies 2	81.8	67.4	85.7
English 1	55.0	53.7	75.1
Biology 1	62.9	57.0	77.8
US History and the Constitution	38.7	43.8	69.1
All Subjects	59.6	56.0	77.3

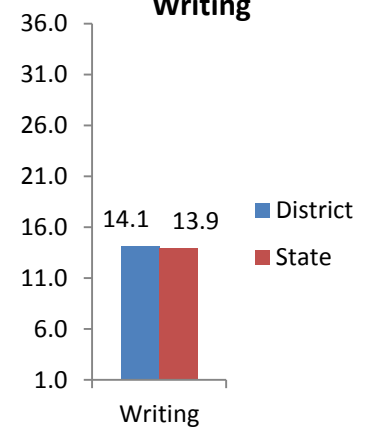
Districts with Students Like Ours are districts with poverty indices of no more than 5% above or below the index for the district.

The ACT, a college readiness assessment, was given to every South Carolina 11th grader in 2015 with the exception of those eligible for alternate assessments. The ACT scores range from 0 to 36. The district and state averages are included for comparison. State averages for ACT data are based on regular public schools and do not include private schools in the state.

**Average ACT Score Achieved by Students: English, Math, Reading, Science, Composite of all four tests, 2015**



**Average ACT Score Achieved by Students: Writing**



Percent of Students in District Meeting ACT College-Ready Benchmarks, 2015				
English Benchmark Score: 18	Math Benchmark Score: 22	Reading Benchmark Score: 22	Science Benchmark Score: 23	All 4 Subjects
12.6	3.2	7.2	2.2	1.1

ACT benchmarks are scores on the ACT subject-area tests that represent the level of achievement required for students to have a 50% chance of obtaining a B or higher or about a 75% chance of obtaining a C or higher in corresponding credit-bearing first-year college courses.

The ACT is a registered trademark of ACT, Inc.

Abbreviations for Missing Data

N/A-Not Applicable

N/AV-Not Available

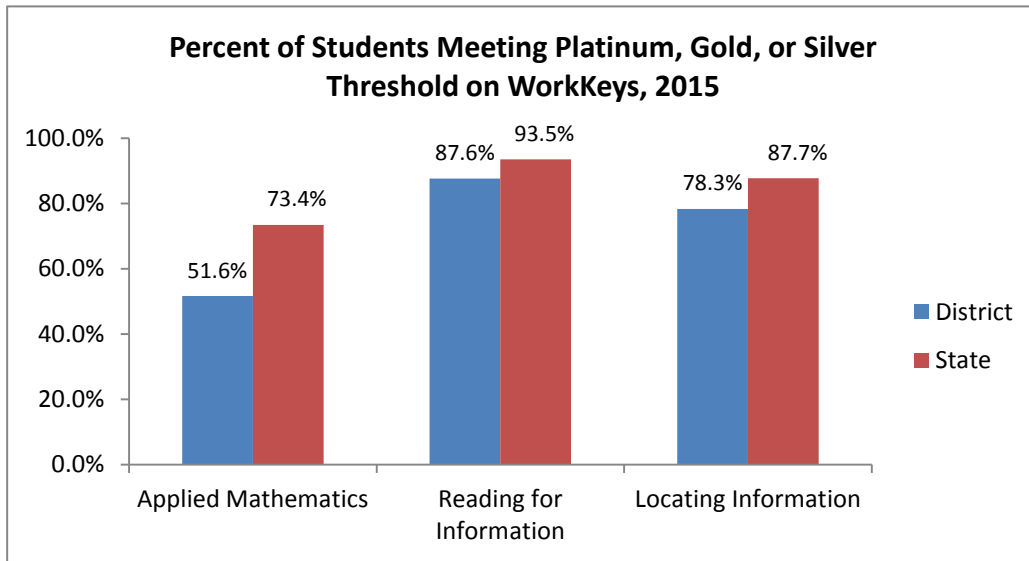
N/C-Not Collected

N/R-Not Reported

I/S-Insufficient Sample

**KNOWLEDGE**

ACT WorkKeys is a job skills assessment system measuring "real world" skills that employers believe are critical in the workplace. The assessment is given to every South Carolina 11th grader with the exception of those eligible for alternative assessments. The assessment consists of three subtests: Applied Mathematics, Reading for Information, and Locating Information. Students can earn certificates at the Platinum, Gold, Silver, and Bronze level on WorkKeys assessments.



District SAT Performance				
Percent of Students Tested	Average Critical Reading Score	Average Math Score	Average Writing Score	Average Composite Score
43.1	376	377	369	1122

The highest composite score on the SAT is a 2400. For each of the three sections of the test, the highest score is 800.

## Abbreviations for Missing Data

N/A-Not Applicable

N/AV-Not Available

N/C-Not Collected

N/R-Not Reported

I/S-Insufficient Sample

**OUTCOMES**

State Graduation Rate	
Four-Year	Five-Year
80.3	82.0

District Four-Year Cohort Graduation Rate			
2015	2014	2013	2012
83.2	80.9	82.5	77.2

District Five-Year Cohort Graduation Rate			
2015	2014	2013	2012
84.0	84.3	81.9	77.2

Percentage of Seniors Eligible for LIFE Scholarship	
District	State
39.2	42.2

Percentage of Students from 2014 Graduating Class Enrolled in a two- or four-year college or technical college pursuing an associates degree, certificate, or diploma in Fall 2014	
District	State
56.6	70.3

## Abbreviations for Missing Data

N/A-Not Applicable

N/AV-Not Available

N/C-Not Collected

N/R-Not Reported

I/S-Insufficient Sample

**OPPORTUNITIES****For students to meet the profile of the SC Graduate**

	Our District	Change from Last Year	Districts with students like ours
<b>Students (n = 4,423)</b>			
Percent of students participating in Medicaid, SNAP, or TANF; homeless, foster, or migrant students (poverty index)	93.3	Down from 97.6%	N/A
Attendance Rate	94.5	Down from 96.5%	94.6
With disabilities	16.6	Down from 17.0%	13.7
Out of school suspensions or expulsions for violent and/or criminal offenses	1.3	Up from 0.1%	1.2
Percentage of students served by gifted and talented programs	7.0	Down from 7.1%	5.9
Enrolled in AP/IB programs	5.3	Up from 2.2%	6.5
Successful in AP/IB programs	N/A	N/A	13.1
Career/tech students in co-curricular organizations	4.8	N/A	1.1
Enrollment in career/technology courses	N/A	N/A	-18.0
Students participating in work-based experiences	5.7	N/A	1.4
Number of seniors who have completed FAFSA forms	142	N/A	93
Percentage of seniors completing college applications	69.6	N/A	85.5
Number of students in dual enrollment courses	59	Up from 43	47
Success rate of students in dual enrollment courses	98.1	N/A	99.3
Annual dropout rate	1.3	Up from 0.0%	2.1
Dropout recovery rate	0.0	N/A	6.5
Percentage of students retained	5.4	Up from 4.5%	2.7
Enrolled in adult education GED or diploma programs	90	Down from 147	22
Completed adult education GED or diploma program	9	Down from 15	9
<b>Teachers (n = 283)</b>			
Percentage of teachers with advanced degrees	48.1	Down from 54.5%	58.9
Percentage of teachers on continuing contract	54.8	Down from 70.2%	66.7
Teachers returning from previous year	84.0	Down from 86.6%	81.9
Teacher attendance rate	93.6	Down from 94.6%	94.8
Average teacher salary*	\$42,059	Down 2.2%	\$44,853
Professional development days / teacher	N/AV	N/A	N/AV
District-issued technology devices per teacher	N/A	N/C	N/A
Percentage of classes not taught by highly qualified teachers	21.5	Up from 19.3%	7.1
Percentage of teacher vacancies for more than 9 weeks	7.1	N/A	1.7

## Abbreviations for Missing Data

N/A-Not Applicable

N/AV-Not Available

N/C-Not Collected

N/R-Not Reported

I/S-Insufficient Sample

**OPPORTUNITIES**

	Our District	Change from Last Year	Districts with students like ours
<b>District</b>			
Superintendent's years at district	0.6	Down from 4.0	4.0
Student-teacher ratio in core subjects	32.2 to 1	Up from 20.2 to 1	22.6 to 1
Prime instructional time	87.3	Down from 90.4%	88.2
Opportunities in the arts	Excellent	No change	Excellent
Opportunities in foreign languages	Excellent	N/A	Good
Number of schools with AdvancEd (SACS) accreditation	13	Down from 14	N/A
Parents attending conferences	94.9	Up from 83.9%	98.4
Bandwidth capacity per student	<25 Mbps	N/C	N/A
Number of schools with classroom wireless access	11.0	N/C	N/A
Do any schools plan to implement one-to-one computing	Yes	N/C	N/A
District-issued learning devices per student	N/A	N/C	N/A
Do any schools offer online or blended (50% online) courses	No	N/C	N/A
Dual enrollment courses offered	6	N/A	9
Dollars spent per pupil**	\$10,773	Up 2.6%	\$10,946
Percent of expenditures for instruction**	45.9	Up from 45.8%	47.3
Percent of expenditures for teachers' salaries**	50.0	Down from 50.4%	49.8
Average administrator salary	\$74,416	Down 0.9%	\$74,416

\* Includes current year teachers contracted for 190 days or more.

\*\* Prior year audited financial data are reported.

**State Ratings History of District**

Year	Absolute Rating	Growth Rating
2014	Good	Average
2013	Average	Good
2012	Average	Below Average

Based on state law, districts will not be rated for state accountability purposes until Fall 2017.

**Additional Resources**

SC State Content Standards  
[Family-Friendly Guides to the SC Content Standards](#)  
[2014-15 Accountability Manual](#)  
[Report Card Data Files](#)  
[ESEA Data Files](#)

## Abbreviations for Missing Data

N/A-Not Applicable

N/AV-Not Available

N/C-Not Collected

N/R-Not Reported

I/S-Insufficient Sample