

School District Of Pickens County

1348 Griffin Mill Road

Easley, SC 29640



South Carolina State Report Card

State and federal laws require public schools to release report cards to the public each year. This year, the report card has been updated to reflect changes in reporting directed by the SC Education Oversight Committee. Schools will not be rated for state accountability purposes until Fall 2017 when the state will transition to a single accountability system. The following reports student performance in school year 2014-15.

Grades: PK-12 District
Enrollment: 16,619 students
District Phone: 864-397-1000
District Website: <http://www.pickens.k12.sc.us/>

Superintendent: Dr. Daniel B. Merck
Board Chair: Dr. Brian Swords



Profile of the SC Graduate

World Class Knowledge

- Rigorous standards in language arts and math for career and college readiness
- Multiple languages, science, technology, engineering, mathematics (STEM), arts and social sciences*

World Class Skills

- Creativity and innovation
- Critical thinking and problem solving
- Collaboration and teamwork
- Communication, information, media and technology
- Knowing how to learn

Life and Career Characteristics

- Integrity
- Self-direction
- Global perspective
- Perseverance
- Work ethic
- Interpersonal skills

WORLD CLASS SKILLS & LIFE AND CAREER CHARACTERISTICS

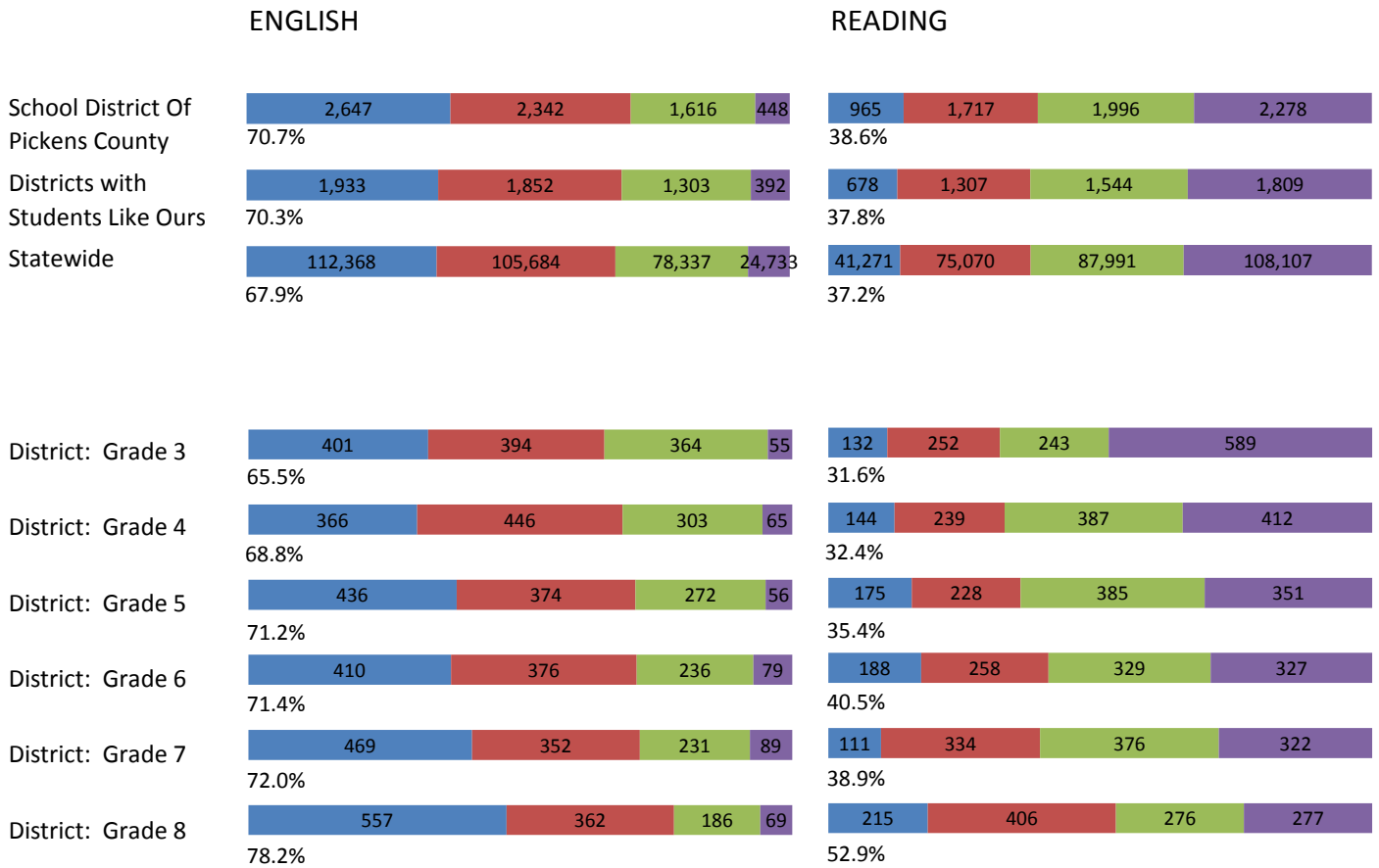
Our district is helping all students develop the world class skills and life and career characteristics of the Profile of the Graduate by ...

The School District of Pickens County is helping its students develop the world class skills and life and career characteristics of the Profile of the SC Graduate by providing a quality 21st century education that prepares all students for success beyond the classroom. We aligned our district's vision, instructional model, and strategic plan with the Profile of the Graduate, and we developed a five-year plan for capital needs and for the general fund. This includes five-year planning for technology and STEM. In 2014-15, we continued our emphasis on STEM education. We expanded our Gateway to Technology program to Liberty Middle School. Teams from Forest Acres and Chastain Road Elementary Schools earned the right to compete in the International Jet Toy Competition, and FLL robotics teams from Clemson and Crosswell Elementary Schools won honors at the West State Championship. Manufacturers Caring for Pickens County donated two 3-D printers, and the Gettys Middle Robotics Club learned about building prosthetic hands with the goal of building a hand for one of their assistant principals. Our graduation coach initiative and continued emphasis on rigor, relevance, and relationships contributed to our highest-ever graduation rate. Advanced Placement (AP) and dual enrollment offerings increased, and we partnered with VirtualSC to provide new academic opportunities for students. Our Adult Learning Center played a vital role in helping our county earn certification as a Work Ready Community. Our Bring Your Own Device program continued, and we began preparation for a one-to-one initiative at the middle and high school levels. Teachers were trained on developing digital curriculum and using technology tools to enhance learning. PLCs, early release days, and designated professional development days allowed teachers and administrators to learn together and share best practices. This commitment to professional growth allowed us to model life-long learning as well as the collaboration and teamwork we encourage in our students. The health and safety of our students remained a top priority as we partnered with the Pickens Fire Department to offer Hands Only CPR to students at Pickens Middle and Pickens High Schools, and we implemented the radKIDS program in all of our elementary schools. Extracurricular clubs and organizations promoted leadership, collaboration, and community service and provided rich and varied experiences that helped prepare our students to be successful South Carolina graduates. Dr. Daniel B. Merck, Ed. D., Superintendent

* 21st Century core courses in Social Sciences include History, Geography, Economics, Government and Civics.

KNOWLEDGE

The ACT Aspire assessment was given to students in grades 3-8 in Spring 2015. Students were assessed in the subject areas of Reading, English, Mathematics and Writing



Abbreviations for Missing Data

N/A-Not Applicable

N/AV-Not Available

N/C-Not Collected

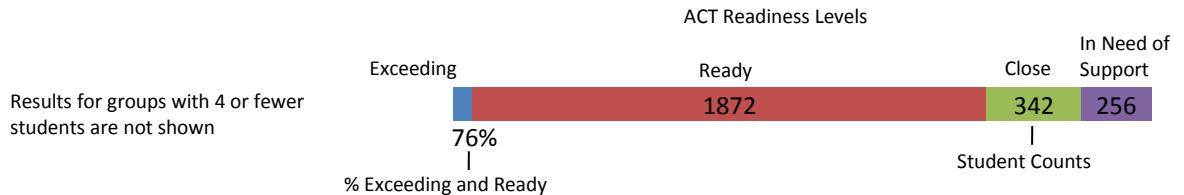
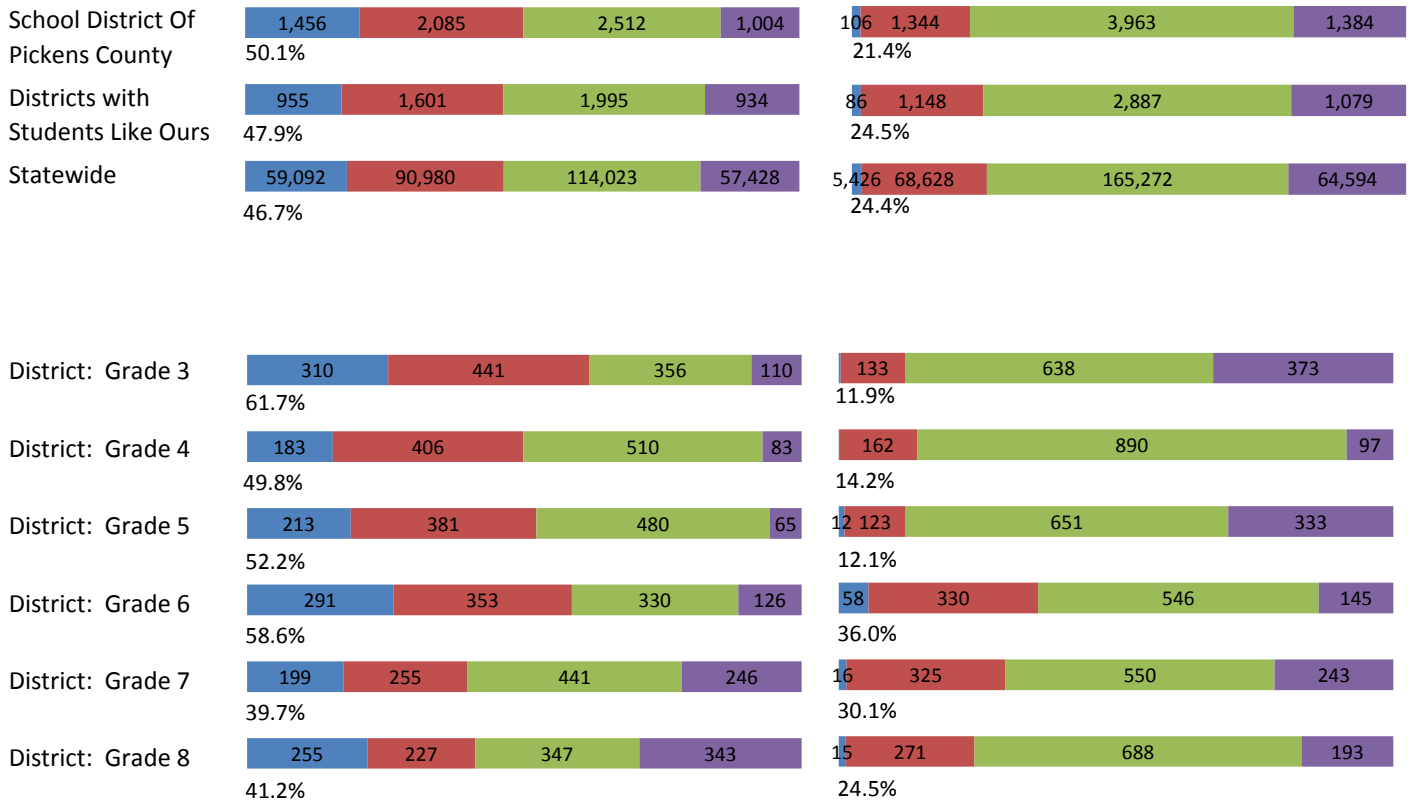
N/R-Not Reported

I/S-Insufficient Sample

KNOWLEDGE

MATHEMATICS

WRITING



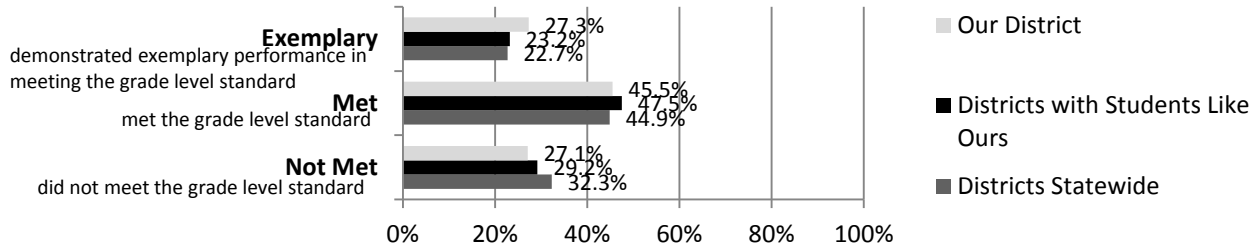
Abbreviations for Missing Data

N/A-Not Applicable N/AV-Not Available N/C-Not Collected N/R-Not Reported I/S-Insufficient Sample

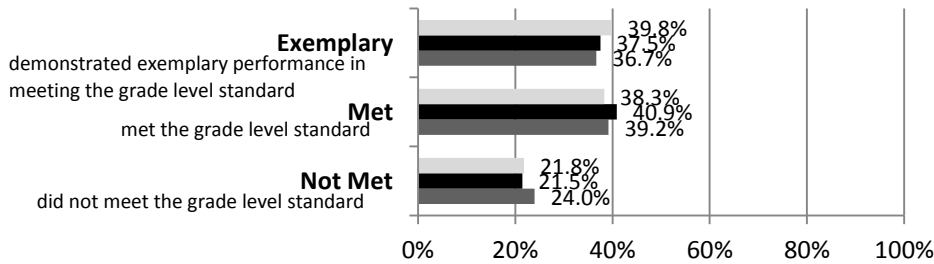
KNOWLEDGE

The SC Palmetto Assessment of State Standards (SCPASS) was given to students in grades 4 - 8 in Spring 2015. Students were assessed in the subject areas of Science and Social Studies.

Science



Social Studies



Science SCPASS

Our District: Percent Met and Above for each grade level

4th grade	5th grade	6th grade	7th grade	8th grade
76.2	75.0	68.8	71.7	72.5

Social Studies SCPASS

Our District: Percent Met and Above for each grade level

4th grade	5th grade	6th grade	7th grade	8th grade
88.5	76.9	81.6	66.5	77.3

Note: Results include SC-Alt assessment results.

Exemplary	"Exemplary": student demonstrated exemplary performance in meeting the grade level standard.
Met	"Met": student met the grade level standard.
Not Met	"Not Met": student did not meet the grade level standard.

Abbreviations for Missing Data

N/A-Not Applicable N/AV-Not Available N/C-Not Collected N/R-Not Reported I/S-Insufficient Sample

KNOWLEDGE

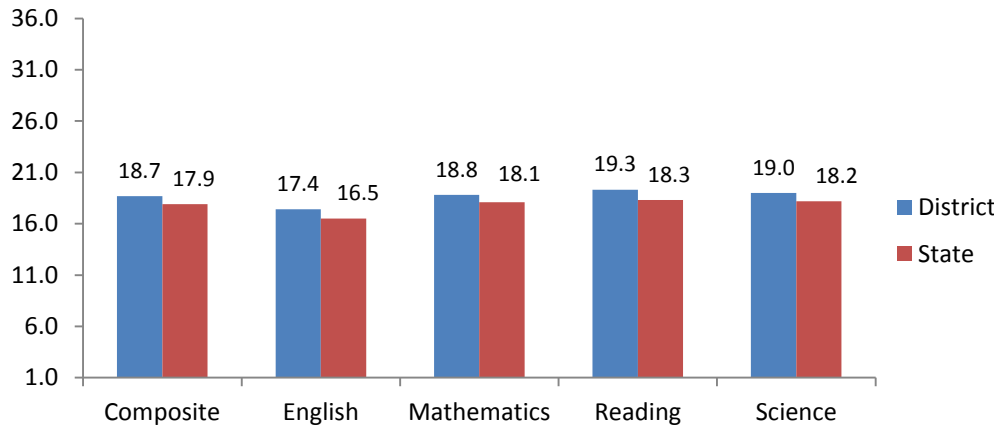
End of Course Tests

Percent of tests with scores of 70 or above on:	Our District	Districts with Students Like Ours	State
Algebra 1/Math for the Technologies 2	84.5	88.5	85.7
English 1	77.7	79.5	75.1
Biology 1	82.2	82.9	77.8
US History and the Constitution	73.6	70.8	69.1
All Subjects	79.6	80.6	77.3

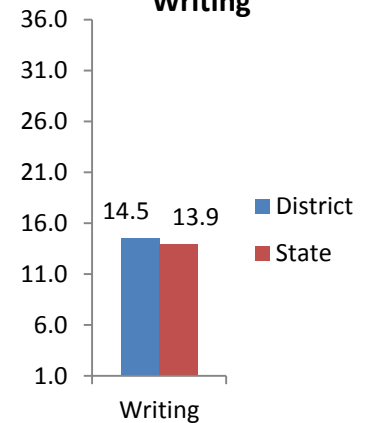
Districts with Students Like Ours are districts with poverty indices of no more than 5% above or below the index for the district.

The ACT, a college readiness assessment, was given to every South Carolina 11th grader in 2015 with the exception of those eligible for alternate assessments. The ACT scores range from 0 to 36. The district and state averages are included for comparison. State averages for ACT data are based on regular public schools and do not include private schools in the state.

Average ACT Score Achieved by Students: English, Math, Reading, Science, Composite of all four tests, 2015



Average ACT Score Achieved by Students: Writing



Percent of Students in District Meeting ACT College-Ready Benchmarks, 2015

English Benchmark Score: 18	Math Benchmark Score: 22	Reading Benchmark Score: 22	Science Benchmark Score: 23	All 4 Subjects
45.3	27.6	30.7	22.5	14.6

ACT benchmarks are scores on the ACT subject-area tests that represent the level of achievement required for students to have a 50% chance of obtaining a B or higher or about a 75% chance of obtaining a C or higher in corresponding credit-bearing first-year college courses.

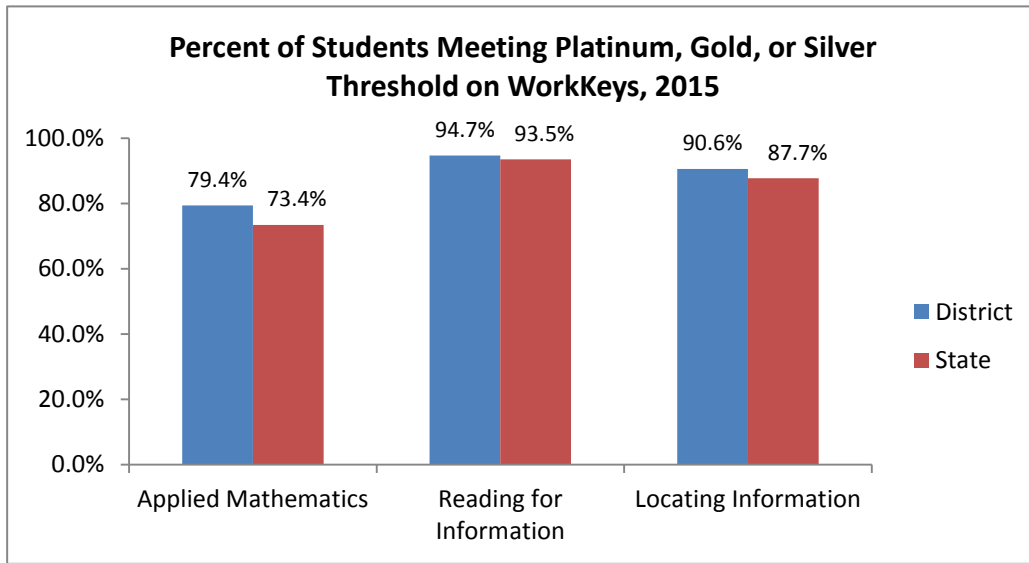
The ACT is a registered trademark of ACT, Inc.

Abbreviations for Missing Data

N/A-Not Applicable N/AV-Not Available N/C-Not Collected N/R-Not Reported I/S-Insufficient Sample

KNOWLEDGE

ACT WorkKeys is a job skills assessment system measuring "real world" skills that employers believe are critical in the workplace. The assessment is given to every South Carolina 11th grader with the exception of those eligible for alternative assessments. The assessment consists of three subtests: Applied Mathematics, Reading for Information, and Locating Information. Students can earn certificates at the Platinum, Gold, Silver, and Bronze level on WorkKeys assessments.



District SAT Performance				
Percent of Students Tested	Average Critical Reading Score	Average Math Score	Average Writing Score	Average Composite Score
48.8	509	511	487	1507

The highest composite score on the SAT is a 2400. For each of the three sections of the test, the highest score is 800.

Abbreviations for Missing Data

N/A-Not Applicable

N/AV-Not Available

N/C-Not Collected

N/R-Not Reported

I/S-Insufficient Sample

OUTCOMES

State Graduation Rate	
Four-Year	Five-Year
80.3	82.0

District Four-Year Cohort Graduation Rate			
2015	2014	2013	2012
82.5	80.5	76.8	75.2

District Five-Year Cohort Graduation Rate			
2015	2014	2013	2012
82.9	79.0	77.7	74.7

Percentage of Seniors Eligible for LIFE Scholarship	
District	State
60.9	42.2

Percentage of Students from 2014 Graduating Class Enrolled in a two- or four-year college or technical college pursuing an associates degree, certificate, or diploma in Fall 2014	
District	State
64.3	70.3

Abbreviations for Missing Data

N/A-Not Applicable

N/AV-Not Available

N/C-Not Collected

N/R-Not Reported

I/S-Insufficient Sample

OPPORTUNITIES**For students to meet the profile of the SC Graduate**

	Our District	Change from Last Year	Districts with students like ours
Students (n = 16,619)			
Percent of students participating in Medicaid, SNAP, or TANF; homeless, foster, or migrant students (poverty index)	63.8	Down from 66.3%	N/A
Attendance Rate	95.1	Down from 95.5%	95.4
With disabilities	11.7	Down from 12.1%	12.1
Out of school suspensions or expulsions for violent and/or criminal offenses	0.8	Up from 0.4%	0.7
Percentage of students served by gifted and talented programs	18.1	Down from 18.2%	18.1
Enrolled in AP/IB programs	20.5	Down from 24.8%	25.5
Successful in AP/IB programs	68.2	Up from 65.0%	54.1
Career/tech students in co-curricular organizations	3.6	N/A	1.2
Enrollment in career/technology courses	N/A	N/A	-18.0
Students participating in work-based experiences	11.3	N/A	6.5
Number of seniors who have completed FAFSA forms	633	N/A	482
Percentage of seniors completing college applications	74.0	N/A	92.8
Number of students in dual enrollment courses	257	Up from 173	186
Success rate of students in dual enrollment courses	97.6	N/A	98.1
Annual dropout rate	3.6	Down from 4.0%	2.1
Dropout recovery rate	2.3	N/A	3.5
Percentage of students retained	1.8	Up from 1.7%	1.5
Enrolled in adult education GED or diploma programs	383	Down from 462	135
Completed adult education GED or diploma program	80	Down from 123	32
Teachers (n = 1,025)			
Percentage of teachers with advanced degrees	63.5	Down from 64.2%	62.6
Percentage of teachers on continuing contract	86.7	Down from 87.1%	82.8
Teachers returning from previous year	91.1	Down from 92.4%	90.8
Teacher attendance rate	94.4	Down from 95.2%	95.1
Average teacher salary*	\$47,691	Down 0.4%	\$49,118
Professional development days / teacher	N/A	N/A	N/AV
District-issued technology devices per teacher	N/A	N/C	N/A
Percentage of classes not taught by highly qualified teachers	0.4	Down from 0.7%	2.7
Percentage of teacher vacancies for more than 9 weeks	0.2	N/A	0.3

Abbreviations for Missing Data

N/A-Not Applicable

N/AV-Not Available

N/C-Not Collected

N/R-Not Reported

I/S-Insufficient Sample

OPPORTUNITIES

	Our District	Change from Last Year	Districts with students like ours
District			
Superintendent's years at district	1.0	Up from 0.5	5.8
Student-teacher ratio in core subjects	23.5 to 1	Up from 23.3 to 1	23.5 to 1
Prime instructional time	87.8	Down from 89.6%	89.4
Opportunities in the arts	Excellent	No change	Excellent
Opportunities in foreign languages	Excellent	N/A	Excellent
Number of schools with AdvancEd (SACS) accreditation	26	No change	N/A
Parents attending conferences	95.6	Down from 99.4%	98.9
Bandwidth capacity per student	<25 Mbps	N/C	N/A
Number of schools with classroom wireless access	26.0	N/C	N/A
Do any schools plan to implement one-to-one computing	Yes	N/C	N/A
District-issued learning devices per student	N/A	N/C	N/A
Do any schools offer online or blended (50% online) courses	Yes	N/C	N/A
Dual enrollment courses offered	57	N/A	21
Dollars spent per pupil**	\$7,911	Up 0.3%	\$8,924
Percent of expenditures for instruction**	55.7	Up from 55.5%	56.1
Percent of expenditures for teachers' salaries**	58.0	Down from 58.4%	58.1
Average administrator salary	\$78,960	Up 2.3%	\$82,298

* Includes current year teachers contracted for 190 days or more.

** Prior year audited financial data are reported.

State Ratings History of District

Year	Absolute Rating	Growth Rating
2014	Excellent	Good
2013	Good	Below Average
2012	Good	Good

Based on state law, districts will not be rated for state accountability purposes until Fall 2017.

Additional Resources

SC State Content Standards
[Family-Friendly Guides to the SC Content Standards](#)
[2014-15 Accountability Manual](#)
[Report Card Data Files](#)
[ESEA Data Files](#)

Abbreviations for Missing Data

N/A-Not Applicable

N/AV-Not Available

N/C-Not Collected

N/R-Not Reported

I/S-Insufficient Sample