



## Robert Anderson College and Career Academy

2302 Dobbins Bridge Road  
Anderson, SC 29609

<b>Grades</b>	6-8 Middle School	
<b>Enrollment</b>	694 Students	
<b>Principal</b>	Kathy Dobbins	864-716-3890
<b>Superintendent</b>	Betty Bagley	864-260-5000
<b>Board Chair</b>	Rick Bradshaw	864-224-5502

# THE STATE OF SOUTH CAROLINA 2013 ANNUAL SCHOOL REPORT CARD

## RATINGS OVER 5-YEAR PERIOD

YEAR	ABSOLUTE RATING	GROWTH RATING
<b>2013</b>	<b>Average</b>	<b>Average</b>
2012	Good	Excellent
2011	N/A	N/A
2010	N/A	N/A
2009	N/A	N/A

## DEFINITIONS OF SCHOOL RATING TERMS

- Excellent – School performance substantially exceeds the standards for progress toward the 2020 SC Performance Vision
- Good – School performance exceeds the standards for progress toward the 2020 SC Performance Vision
- Average – School performance meets the standards for progress toward the 2020 SC Performance Vision
- Below Average – School is in jeopardy of not meeting the standards for progress toward the 2020 SC Performance Vision
- At-Risk – School performance fails to meet the standards for progress toward the 2020 SC Performance Vision

## SOUTH CAROLINA PERFORMANCE VISION

By 2020 all students will graduate with the knowledge and skills necessary to compete successfully in the global economy, participate in a democratic society and contribute positively as members of families and communities.

<http://ed.sc.gov>  
<http://www.eoc.sc.gov>

Percent of Student PASS Records Matched for Purpose of Computing Growth Rating

Percent of students tested in 2012-13 whose 2011-12 test scores were located

97.7%

ABSOLUTE RATINGS OF MIDDLE SCHOOLS WITH STUDENTS LIKE OURS\*

Excellent	Good	Average	Below Average	At-Risk
0	3	46	6	0

\* Ratings are calculated with data available by 03/14/2014.

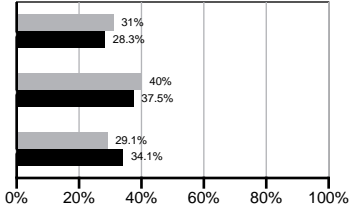
Palmetto Assessment of State Standards (PASS)

Exemplary

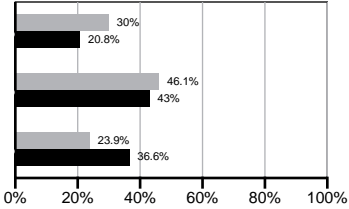
Met

Not Met

English/Language Arts



Mathematics

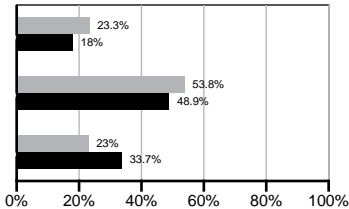


Exemplary

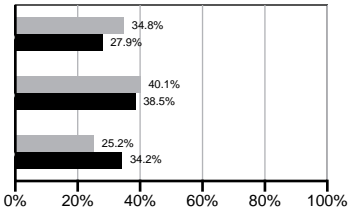
Met

Not Met

Science



Social Studies

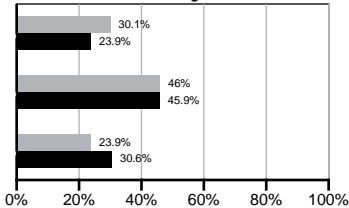


Exemplary

Met

Not Met

Writing



Our school



Middle schools with Students Like Ours

\* Middle schools with Students Like Ours are middle schools with poverty indices of no more than 5% above or below the index for the school.

Definition of Critical Terms

Exemplary	"Exemplary" means the student demonstrated exemplary performance in meeting the grade level standard.
Met	"Met" means the student met the grade level standard.
Not Met	"Not Met" means that the student did not meet the grade level standard.

Abbreviations for Missing Data

N/A–Not Applicable

N/AV–Not Available

N/C–Not Collected

N/R–Not Reported

I/S–Insufficient Sample

End of Course Tests

Percent of tests with scores of 70 or above on:	Our Middle School	Middle Schools with Students Like Ours
Algebra 1/Math for the Technologies 2	91.1%	96.3%
English 1	100.0%	95.8%
Physical Science	N/A	N/A
US History and the Constitution	N/A	N/A
All Subjects	95.0%	96.5%

School Profile

	Our School	Change from Last Year	Middle Schools with Students Like Ours	Median Middle School
<b>Students (n=694)</b>				
Students enrolled in high school credit courses (grades 7 & 8)	15.0%	Up from 9.2%	22.6%	24.6%
Retention rate	0.4%	Up from 0.0%	0.8%	0.6%
Attendance rate	95.1%	Down from 95.8%	95.6%	95.9%
Served by gifted and talented program	30.7%	N/A	15.5%	18.5%
With disabilities	14.9%	N/A	14.1%	13.0%
Older than usual for grade	5.7%	N/A	5.9%	4.8%
Out-of-school suspensions or expulsions for violent and/or criminal offenses	0.0%	No Change	0.7%	0.6%
Annual dropout rate	0.5%	Up from 0.0%	0.0%	0.0%
<b>Teachers (n=47)</b>				
Teachers with advanced degrees	76.6%	Up from 72.9%	58.7%	61.5%
Continuing contract teachers	72.3%	Down from 91.7%	76.0%	77.2%
Teachers returning from previous year	N/A	N/A	84.9%	85.9%
Teacher attendance rate	95.9%	N/R	94.5%	94.9%
Average teacher salary*	\$50,179	Up 4.1%	\$46,554	\$47,313
Professional development days/teacher	31.7 days	Up from 21.7 days	11.2 days	10.1 days
<b>School</b>				
Principal's years at school	0.5	Down from 12.0	5.0	4.0
Student-teacher ratio in core subjects	21.2 to 1	Up from 20.4 to 1	21.9 to 1	22.1 to 1
Prime instructional time	90.3%	N/R	89.0%	89.6%
Opportunities in the arts	Excellent	No Change	Good	Good
SACS accreditation	Yes	No Change	Yes	Yes
Parents attending conferences	67.4%	Up from 15.3%	98.2%	99.0%
Character development program	Below Average	Down from Excellent	Good	Good
Dollars spent per pupil**	\$7,083	N/A	\$7,092	\$7,239
Percent of expenditures for instruction**	65.0%	N/A	62.5%	63.0%
Percent of expenditures for teacher salaries**	64.0%	N/A	59.5%	61.0%

\* Includes current year teachers contracted for 185 or more days.

\*\* Prior year audited financial data are reported.

Abbreviations for Missing Data

N/A–Not Applicable    N/AV–Not Available    N/C–Not Collected    N/R–Not Reported    I/S–Insufficient Sample

Report of Principal and School Improvement Council

As part of the vision of the Anderson Five superintendent and the community support of a referendum to fund the vision, Robert Anderson Middle School opened in July, 2011. Robert Anderson is named for General Robert Anderson, a founding father of the city and a Revolutionary War general. The excitement of opening a new school was evident as teachers, staff, and students entered the state-of-the-art facility. The school is made up of classrooms equipped with technology, a regulation size gymnasium, and an eight hundred thirty seat auditorium that is frequently used for parent meetings, choral presentations, and dramatic productions such as "Beauty and the Beast" and "Annie." The majority of the staff and one third of the student population were formerly at Southwood Middle School. Due to rezoning, the student body population increased in our first year from 450 to over 700 students. Even though we have experienced periods of adjustment, our first years at Robert Anderson have been productive. In the 2011-12 school year, we were named a National AVID Demonstration Site, an honor we accept with pride. We also received gold and silver flags for academic achievement that same year. During the 2012-13 school year, our faculty researched and finalized our magnet theme – college and career readiness. This theme was presented to the school board, who accepted the proposal and approved the new name of the school – Robert Anderson College and Career Academy. The changes have been challenging; however, our philosophy remains intact. The faculty and staff of Robert Anderson College and Career Academy are committed to constantly improving student achievement and preparing our students for technical schools, colleges, and careers requiring skilled workers. Our motto is "The Road to College Begins Here." We are on an ever changing adventure to achieve success with the students of Robert Anderson College and Career Academy.

Kathy Dobbins, Principal      Jim Romedy, SIC Chair

Evaluations by Teachers, Students and Parents

	Teachers	Students*	Parents*
Number of surveys returned	51	216	86
Percent satisfied with learning environment	100%	81.1%	89.6%
Percent satisfied with social and physical environment	98%	87.5%	85.8%
Percent satisfied with school-home relations	92%	84.8%	87.8%

\* Only students at the highest middle school grade level and their parents were included.

Abbreviations for Missing Data

N/A–Not Applicable    N/AV–Not Available    N/C–Not Collected    N/R–Not Reported    I/S–Insufficient Sample

ESEA/Federal Accountability Rating System

In July 2013, the South Carolina Department of Education was granted a waiver from several accountability requirements of the federal Elementary and Secondary Education Act (ESEA). This waiver allowed SC to replace the former pass/fail system with one that utilizes more of the statewide assessments already in place and combine these subject area results with graduation rate (in high schools) to determine if each school met the target or made progress toward the target. This analysis results in a letter grade for the school rather than the pass/fail system of previous years. For a detailed review of the matrix for each school and districts that determined the letter grade, please use the following link: <http://ed.sc.gov/data/esea/> or request this information from your child's district or school.

Overall Weighted Points Total	90.1
Overall Grade Conversion	A

Index Score	Grade	Description
90-100	A	Performance substantially exceeds the state's expectations.
80-89.9	B	Performance exceeds the state's expectations.
70-79.9	C	Performance meets the state's expectations.
60-69.9	D	Performance does not meet the state's expectations.
Less than 60	F	Performance is substantially below the state's expectations

Accountability Indicator for Title I Schools

Robert Anderson College and Career Academy school has been designated as a:

- ☒ Title I Reward School for Performance - among the highest performing Title I schools in a given year.
- ☐ Title I Reward School for Progress – one of the schools with substantial progress in student subgroups.
- ☐ Title I Focus School – one of the schools with the highest average performance gap between subgroups.
- ☐ Title I Priority School – one of the 5% lowest performing Title I schools.
- ☐ Title I School – does not qualify as Reward, Focus or Priority School.
- ☐ Non-Title I School – therefore the designations above are not applicable.

Teacher Quality and Student Attendance

	Our District	State
Classes in low poverty schools not taught by highly qualified teachers	1.8%	2.3%
Classes in high poverty schools not taught by highly qualified teachers	0.0%	4.9%

	Our School	State Objective	Met State Objective
Classes not taught by highly qualified teachers	1.6%	0.0%	No
Student attendance rate	95.1%	94.0%*	Yes

\* Or greater than last year

Performance By Group

Subgroups	ELA Mean	Math Mean	Science Mean	Social Studies Mean	ELA % Tested	Math % Tested
Grades 6-8						
All Students	644.3	649.0	630.7	637.3	100.0	100.0
Male	639.2	646.3	632.2	639.9	100.0	100.0
Female	650.5	652.3	629.0	634.5	100.0	100.0
White	658.0	659.1	643.8	646.7	100.0	100.0
African American	629.7	637.6	614.5	627.0	100.0	100.0
Asian/Pacific Islander	N/A	N/A	N/A	N/A	N/A	N/A
Hispanic	N/A	N/A	N/A	N/A	100.0	100.0
American Indian/Alaskan	N/A	N/A	N/A	N/A	N/A	N/A
Disabled	599.0	606.2	593.1	591.9	100.0	100.0
Limited English Proficient	636.5	651.3	642.3	653.0	N/A	N/A
Subsidized meals	637.4	644.2	623.8	632.5	100.0	100.0
Annual Measurable Objective (AMO)	628.0	628.0	628.0	628.0	95.0	95.0

Abbreviations for Missing Data

N/A–Not Applicable    N/AV–Not Available    N/C–Not Collected    N/R–Not Reported    I/S–Insufficient Sample

PASS Performance By Grade Level

	Grade	Enrollment 1st Day of Testing	% Tested	% Not Met	% Met	% Exemplary	% Met or Exemplary
English/Language Arts							
2012	3	N/A	N/AV	N/A	N/A	N/A	N/A
	4	N/A	N/AV	N/A	N/A	N/A	N/A
	5	N/A	N/AV	N/A	N/A	N/A	N/A
	6	189	99.5	32.8	28.2	39	67.2
	7	255	100	31.3	38.8	30	68.8
	8	199	100	29	36.4	34.7	71
2013	3	N/A	N/AV	N/A	N/A	N/A	N/A
	4	N/A	N/AV	N/A	N/A	N/A	N/A
	5	N/A	N/AV	N/A	N/A	N/A	N/A
	6	253	100	22.9	39.4	37.7	77.1
	7	193	100	26.9	45.1	28	73.1
	8	242	100	35.7	34.4	29.9	64.3
Mathematics							
2012	3	N/A	N/AV	N/A	N/A	N/A	N/A
	4	N/A	N/AV	N/A	N/A	N/A	N/A
	5	N/A	N/AV	N/A	N/A	N/A	N/A
	6	189	100	22	36.7	41.2	78
	7	255	100	20	41.7	38.3	80
	8	199	100	24.4	38.1	37.5	75.6
2013	3	N/A	N/AV	N/A	N/A	N/A	N/A
	4	N/A	N/AV	N/A	N/A	N/A	N/A
	5	N/A	N/AV	N/A	N/A	N/A	N/A
	6	253	100	18.2	41.9	39.8	81.8
	7	193	100	26.9	48	25.1	73.1
	8	242	100	26.3	49.6	24.1	73.7
Science							
2012	3	N/A	N/AV	N/A	N/A	N/A	N/A
	4	N/A	N/AV	N/A	N/A	N/A	N/A
	5	N/A	N/AV	N/A	N/A	N/A	N/A
	6	97	100	26.4	62.6	11	73.6
	7	255	100	18.3	52.9	28.8	81.7
	8	102	99	18	53.9	28.1	82
2013	3	N/A	N/AV	N/A	N/A	N/A	N/A
	4	N/A	N/AV	N/A	N/A	N/A	N/A
	5	N/A	N/AV	N/A	N/A	N/A	N/A
	6	127	100	21.2	59.3	19.5	78.8
	7	193	100	18.3	55.4	26.3	81.7
	8	123	100	29.9	42.7	27.4	70.1

Abbreviations for Missing Data

N/A–Not Applicable    N/AV–Not Available    N/C–Not Collected    N/R–Not Reported    I/S–Insufficient Sample

PASS Performance By Grade Level

	Grade	Enrollment 1st Day of Testing	% Tested	% Not Met	% Met	% Exemplary	% Met or Exemplary
Social Studies							
2012	3	N/A	N/AV	N/A	N/A	N/A	N/A
	4	N/A	N/AV	N/A	N/A	N/A	N/A
	5	N/A	N/AV	N/A	N/A	N/A	N/A
	6	93	100	20.7	51.7	27.6	79.3
	7	255	100	22.1	37.5	40.4	77.9
	8	97	100	12.6	37.9	49.4	87.4
2013	3	N/A	N/AV	N/A	N/A	N/A	N/A
	4	N/A	N/AV	N/A	N/A	N/A	N/A
	5	N/A	N/AV	N/A	N/A	N/A	N/A
	6	129	100	21.5	50.4	28.1	78.5
	7	193	100	23.4	36.6	40	76.6
	8	119	100	30.8	34.6	34.6	69.2
Writing							
2012	3	N/A	N/AV	N/A	N/A	N/A	N/A
	4	N/A	N/AV	N/A	N/A	N/A	N/A
	5	N/A	N/AV	N/A	N/A	N/A	N/A
	6	N/A	N/AV	N/A	N/A	N/A	N/A
	7	N/A	N/AV	N/A	N/A	N/A	N/A
	8	198	100	19.2	45.8	35	80.8
2013	3	N/A	N/AV	N/A	N/A	N/A	N/A
	4	N/A	N/AV	N/A	N/A	N/A	N/A
	5	N/A	N/AV	N/A	N/A	N/A	N/A
	6	251	97.2	23.3	46.1	30.6	76.7
	7	190	99.5	19.4	41.1	39.4	80.6
	8	238	99.2	27.5	50	22.5	72.5

Abbreviations for Missing Data

N/A–Not Applicable    N/AV–Not Available    N/C–Not Collected    N/R–Not Reported    I/S–Insufficient Sample