



Summit Drive Elementary School

424 Summit Drive
Greenville, SC 29673

Grades	PK-5 Elementary School	
Enrollment	420 Students	
Principal	Dr. Megan D. Mitchell-	864-355-8800
Superintendent	Mr. Burke Royster	864-355-3100
Board Chair	Mr. Roger Meek	864-233-8587

THE STATE OF SOUTH CAROLINA 2012 ANNUAL SCHOOL REPORT CARD

RATINGS OVER 5-YEAR PERIOD

YEAR	ABSOLUTE RATING	GROWTH RATING
2012	Excellent	Excellent
2011	Excellent	Good
2010	Good	Average
2009	Good	Good
2008	Average	Below Average

DEFINITIONS OF SCHOOL RATING TERMS

- Excellent – School performance substantially exceeds the standards for progress toward the 2020 SC Performance Vision
- Good – School performance exceeds the standards for progress toward the 2020 SC Performance Vision
- Average – School performance meets the standards for progress toward the 2020 SC Performance Vision
- Below Average – School is in jeopardy of not meeting the standards for progress toward the 2020 SC Performance Vision
- At-Risk – School performance fails to meet the standards for progress toward the 2020 SC Performance Vision

SOUTH CAROLINA PERFORMANCE VISION

By 2020 all students will graduate with the knowledge and skills necessary to compete successfully in the global economy, participate in a democratic society and contribute positively as members of families and communities.

<http://ed.sc.gov>
<http://www.eoc.sc.gov>

Percent of Student PASS Records Matched for Purpose of Computing Growth Rating

Percent of students tested in 2011-12 whose 2010-11 test scores were located

96.3%

ABSOLUTE RATINGS OF ELEMENTARY SCHOOLS WITH STUDENTS LIKE OURS*

Excellent	Good	Average	Below Average	At-Risk
49	28	9	1	0

* Ratings are calculated with data available by 11/07/2012.

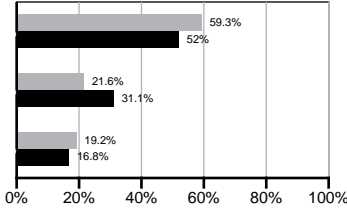
Palmetto Assessment of State Standards (PASS)

Exemplary

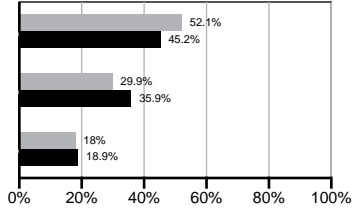
Met

Not Met

English/Language Arts



Mathematics

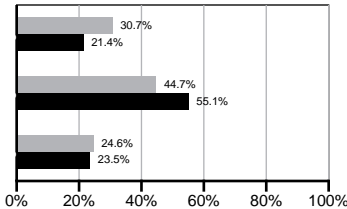


Exemplary

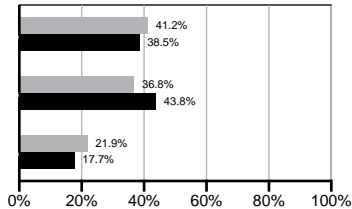
Met

Not Met

Science



Social Studies

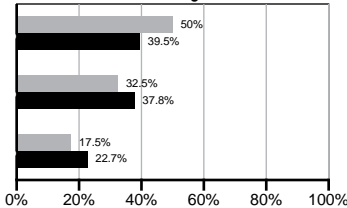


Exemplary

Met

Not Met

Writing



Our school

Elementary schools with Students Like Ours

* Elementary schools with Students Like Ours are elementary schools with poverty indices of no more than 5% above or below the index for the school.

Definition of Critical Terms

Exemplary	"Exemplary" means the student demonstrated exemplary performance in meeting the grade level standard.
Met	"Met" means the student met the grade level standard.
Not Met	"Not Met" means that the student did not meet the grade level standard.

Abbreviations for Missing Data

N/A--Not Applicable N/AV--Not Available N/C--Not Collected N/R--Not Reported I/S--Insufficient Sample

School Profile

	Our School	Change from Last Year	Elementary Schools with Students Like Ours	Median Elementary School
Students (n=420)				
First graders who attended full-day kindergarten	100.0%	No Change	100.0%	100.0%
Retention rate	1.7%	Down from 2.5%	0.9%	1.0%
Attendance rate	97.2%	Up from 96.8%	96.8%	96.6%
Served by gifted and talented program	N/AV	N/AV	N/AV	N/AV
With disabilities other than speech	N/AV	N/AV	N/AV	N/AV
Older than usual for grade	N/AV	N/AV	N/AV	N/AV
Out-of-school suspensions or expulsions for violent and/or criminal offenses	0.0%	No Change	0.0%	0.0%
Teachers (n=26)				
Teachers with advanced degrees	57.7%	Down from 65.2%	63.4%	63.0%
Continuing contract teachers	N/AV	N/AV	N/AV	N/AV
Teachers returning from previous year	88.6%	Down from 92.0%	90.4%	88.7%
Teacher attendance rate	96.0%	Up from 92.6%	95.1%	95.1%
Average teacher salary*	\$49,305	Down 0.5%	\$48,566	\$47,210
Professional development days/teacher	9.4 days	Up from 6.4 days	10.9 days	10.5 days
School				
Principal's years at school	7.0	Up from 6.0	5.0	4.0
Student-teacher ratio in core subjects	20.7 to 1	Down from 21.4 to 1	20.3 to 1	20.0 to 1
Prime instructional time	92.4%	Up from 90.8%	90.6%	90.5%
Opportunities in the arts	Good	No Change	Good	Good
SACS accreditation	Yes	No Change	Yes	Yes
Parents attending conferences	100.0%	No Change	100.0%	100.0%
Character development program	Good	No Change	Excellent	Excellent
Dollars spent per pupil**	\$7,361	Down 7.8%	\$6,868	\$7,247
Percent of expenditures for instruction**	65.4%	Up from 65.3%	68.4%	68.2%
Percent of expenditures for teacher salaries**	65.2%	Up from 64.5%	66.2%	65.7%

* Includes current year teachers contracted for 185 or more days.

** Prior year audited financial data are reported.

Abbreviations for Missing Data

N/A–Not Applicable N/AV–Not Available N/C–Not Collected N/R–Not Reported I/S–Insufficient Sample

Report of Principal and School Improvement Council

Summit Drive Elementary School is a true neighborhood school with the feeling of a family. It is located minutes from downtown Greenville. The school was established in 1953, but the facility was rebuilt in 2001. We pride ourselves on knowing all of our children personally. The spirit of Summit Drive is characterized by its belief that "Every student is a star". A STAR student Shows respect, Takes responsibility, Always follows directions, and is Ready to learn. Our mission is two-fold: encouraging continuous learning and increasing student achievement. Our goals are to increase student achievement in all academic subjects and to encourage students to become life-long learners and responsible citizens. Our English language arts curriculum includes a special developmental writing program for kindergarten through 5th grade. We were named an Exemplary Writing School by the State Department of Education in 2010. Our teachers use tools from innovative programs such as 4 Blocks (phasing toward Fountas and Pinnell Balanced Literacy) to improve literacy and use strategies from programs such as Learning Focused in all academic areas. Our math curriculum includes Calendar Math and flexible math groups which meet once a week for specialized performance on MAP testing and instruction. We continue to have an interactive science lab where science standards are taught through fun and exciting hands-on experiences. As part of the Continuous Quality Improvement program, students keep a data notebook to record their grades and behavior and set goals for personal achievement. We will continue to improve communication with parents, outside agencies, and organizations to yield more involvement and participation in our school. Summit Drive is a school that continuously provides a caring, nurturing, and safe environment. This is seen through our supportive PTA, WATCH D.O.G. program, and outside community partnerships throughout the school year. We pride ourselves in knowing each of our students and families by name.

SIC Chair: Anne Barrington

Principal: Dr. Megan D. Mitchell-Hoefer

Evaluations by Teachers, Students and Parents

	Teachers	Students*	Parents*
Number of surveys returned	22	41	32
Percent satisfied with learning environment	95.2%	100.0%	93.3%
Percent satisfied with social and physical environment	100.0%	97.6%	93.5%
Percent satisfied with school-home relations	100.0%	100.0%	96.8%

* Only students at the highest elementary school grade level and their parents were included.

Abbreviations for Missing Data

N/A–Not Applicable N/AV–Not Available N/C–Not Collected N/R–Not Reported I/S–Insufficient Sample

ESEA/Federal Accountability Rating System

In July 2012, the South Carolina Department of Education was granted a waiver from several accountability requirements of the federal Elementary and Secondary Education Act (ESEA). This waiver allowed SC to replace the former pass/fail system with one that utilizes more of the statewide assessments already in place and combine these subject area results with graduation rate (in high schools) to determine if each school met the target or made progress toward the target. This analysis results in a letter grade for the school rather than the pass/fail system of previous years. For a detailed review of the matrix for each school and districts that determined the letter grade, please use the following link: <http://ed.sc.gov/data/eSEA/> or request this information from your child's district or school.

Overall Weighted Points Total	99.7
Overall Grade Conversion	A

Index Score	Grade	Description
90-100	A	Performance substantially exceeds the state's expectations.
80-89.9	B	Performance exceeds the state's expectations.
70-79.9	C	Performance meets the state's expectations.
60-69.9	D	Performance does not meet the state's expectations.
Less than 60	F	Performance is substantially below the state's expectations

Accountability Indicator for Title I Schools

Summit Drive Elementary School school has been designated as a:

- ☐ Title I Reward School for Performance - among the highest performing Title I schools in a given year.
- ☐ Title I Reward School for Progress – one of the schools with substantial progress in student subgroups.
- ☐ Title I Focus School – one of the schools with the highest average performance gap between subgroups.
- ☐ Title I Priority School – one of the 5% lowest performing Title I schools.
- ☐ Title I School – does not qualify as Reward, Focus or Priority School.
- ☒ Non-Title I School – therefore the designations above are not applicable.

Teacher Quality and Student Attendance

	Our District	State
Classes in low poverty schools not taught by highly qualified teachers	2.1%	2.6%
Classes in high poverty schools not taught by highly qualified teachers	3.2%	5.1%

	Our School	State Objective	Met State Objective
Classes not taught by highly qualified teachers	0.0%	0.0%	Yes
Student attendance rate	97.2%	94.0%*	Yes

* Or greater than last year

Performance By Group

Subgroups	ELA Mean	Math Mean	Science Mean	Social Studies Mean	ELA % Tested	Math % Tested
-----------	----------	-----------	--------------	---------------------	--------------	---------------

Grades 3-5

All Students	683.7	673.4	636.6	652.1	99.4	100.0
Male	685.8	681.8	642.6	659.1	98.9	100.0
Female	681.4	664.3	630.4	644.8	100.0	100.0
White	717.3	701.4	663.1	686.5	100.0	100.0
African American	647.7	640.3	608.3	622.4	98.1	100.0
Asian/Pacific Islander	N/A	N/A	N/A	N/A	N/A	N/A
Hispanic	N/A	N/A	N/A	N/A	N/A	N/A
American Indian/Alaskan	N/A	N/A	N/A	N/A	N/A	N/A
Disabled	N/A	N/A	N/A	N/A	N/A	N/A
Limited English Proficient	N/A	N/A	N/A	N/A	N/A	N/A
Subsidized meals	649.8	644.6	614.1	627.4	98.9	100.0
Annual Measurable Objective (AMO)	630.0	630.0	630.0	630.0	95.0	95.0

Abbreviations for Missing Data

N/A–Not Applicable N/AV–Not Available N/C–Not Collected N/R–Not Reported I/S–Insufficient Sample

PASS Performance By Grade Level

	Grade	Enrollment 1st Day of Testing	% Tested	% Not Met	% Met	% Exemplary	% Met or Exemplary
English/Language Arts							
2011	3	64	100	23.3	16.7	60	76.7
	4	52	100	21.3	31.9	46.8	78.7
	5	58	100	14.5	29.1	56.4	85.5
	6	N/A	N/AV	N/A	N/A	N/A	N/A
	7	N/A	N/AV	N/A	N/A	N/A	N/A
2012	8	N/A	N/AV	N/A	N/A	N/A	N/A
	3	76	100	9.9	19.7	70.4	90.1
	4	64	98.4	28.3	21.7	50	71.7
	5	48	100	15.6	28.9	55.6	84.4
	6	N/A	N/AV	N/A	N/A	N/A	N/A
2012	7	N/A	N/AV	N/A	N/A	N/A	N/A
	8	N/A	N/AV	N/A	N/A	N/A	N/A
Mathematics							
2011	3	64	100	28.3	16.7	55	71.7
	4	52	100	21.3	40.4	38.3	78.7
	5	58	100	12.7	21.8	65.5	87.3
	6	N/A	N/AV	N/A	N/A	N/A	N/A
	7	N/A	N/AV	N/A	N/A	N/A	N/A
2012	8	N/A	N/AV	N/A	N/A	N/A	N/A
	3	76	100	14.1	35.2	50.7	85.9
	4	64	100	26.2	32.8	41	73.8
	5	48	100	8.9	28.9	62.2	91.1
	6	N/A	N/AV	N/A	N/A	N/A	N/A
2012	7	N/A	N/AV	N/A	N/A	N/A	N/A
	8	N/A	N/AV	N/A	N/A	N/A	N/A
Science							
2011	3	32	100	46.7	26.7	26.7	53.3
	4	51	100	32.6	47.8	19.6	67.4
	5	30	100	14.3	46.4	39.3	85.7
	6	N/A	N/AV	N/A	N/A	N/A	N/A
	7	N/A	N/AV	N/A	N/A	N/A	N/A
2012	8	N/A	N/AV	N/A	N/A	N/A	N/A
	3	38	100	22.2	33.3	44.4	77.8
	4	64	100	27.9	50.8	21.3	72.1
	5	24	100	13	47.8	39.1	87
	6	N/A	N/AV	N/A	N/A	N/A	N/A
2012	7	N/A	N/AV	N/A	N/A	N/A	N/A
	8	N/A	N/AV	N/A	N/A	N/A	N/A

Abbreviations for Missing Data

N/A–Not Applicable N/AV–Not Available N/C–Not Collected N/R–Not Reported I/S–Insufficient Sample

PASS Performance By Grade Level

	Grade	Enrollment 1st Day of Testing	% Tested	% Not Met	% Met	% Exemplary	% Met or Exemplary
Social Studies							
2011	3	32	100	33.3	23.3	43.3	66.7
	4	52	100	23.4	48.9	27.7	76.6
	5	28	100	29.6	18.5	51.9	70.4
	6	N/A	N/AV	N/A	N/A	N/A	N/A
	7	N/A	N/AV	N/A	N/A	N/A	N/A
2012	8	N/A	N/AV	N/A	N/A	N/A	N/A
	3	39	100	22.2	41.7	36.1	77.8
	4	64	100	23	41	36.1	77
	5	25	100	12.5	33.3	54.2	87.5
	6	N/A	N/AV	N/A	N/A	N/A	N/A
2012	7	N/A	N/AV	N/A	N/A	N/A	N/A
	8	N/A	N/AV	N/A	N/A	N/A	N/A
Writing							
2011	3	N/A	N/AV	N/A	N/A	N/A	N/A
	4	N/A	N/AV	N/A	N/A	N/A	N/A
	5	57	96.5	20.8	15.1	64.2	79.2
	6	N/A	N/AV	N/A	N/A	N/A	N/A
	7	N/A	N/AV	N/A	N/A	N/A	N/A
2012	8	N/A	N/AV	N/A	N/A	N/A	N/A
	3	N/A	N/AV	N/A	N/A	N/A	N/A
	4	N/A	N/AV	N/A	N/A	N/A	N/A
	5	48	89.6	17.5	32.5	50	82.5
	6	N/A	N/AV	N/A	N/A	N/A	N/A
2012	7	N/A	N/AV	N/A	N/A	N/A	N/A
	8	N/A	N/AV	N/A	N/A	N/A	N/A

Abbreviations for Missing Data

N/A–Not Applicable N/AV–Not Available N/C–Not Collected N/R–Not Reported I/S–Insufficient Sample