



Newington Elementary School

10 Kings Charles Circle
Summerville, SC 29485

Grades	PK-5 Elementary School	
Enrollment	843 Students	
Principal	Camilla Groome	843-871-3230
Superintendent	Joseph R. Pye	843-873-2901
Board Chair	Frances Townsend	843-873-1341

THE STATE OF SOUTH CAROLINA 2012 ANNUAL SCHOOL REPORT CARD

RATINGS OVER 5-YEAR PERIOD

YEAR	ABSOLUTE RATING	GROWTH RATING
2012	Excellent	Excellent
2011	Excellent	Excellent
2010	Excellent	Excellent
2009	Excellent	Good
2008	Good	At-Risk

DEFINITIONS OF SCHOOL RATING TERMS

- Excellent – School performance substantially exceeds the standards for progress toward the 2020 SC Performance Vision
- Good – School performance exceeds the standards for progress toward the 2020 SC Performance Vision
- Average – School performance meets the standards for progress toward the 2020 SC Performance Vision
- Below Average – School is in jeopardy of not meeting the standards for progress toward the 2020 SC Performance Vision
- At-Risk – School performance fails to meet the standards for progress toward the 2020 SC Performance Vision

SOUTH CAROLINA PERFORMANCE VISION

By 2020 all students will graduate with the knowledge and skills necessary to compete successfully in the global economy, participate in a democratic society and contribute positively as members of families and communities.

<http://ed.sc.gov>
<http://www.eoc.sc.gov>

Percent of Student PASS Records Matched for Purpose of Computing Growth Rating

Percent of students tested in 2011-12 whose 2010-11 test scores were located

95.9%

ABSOLUTE RATINGS OF ELEMENTARY SCHOOLS WITH STUDENTS LIKE OURS*

Excellent	Good	Average	Below Average	At-Risk
47	30	10	1	0

* Ratings are calculated with data available by 11/07/2012.

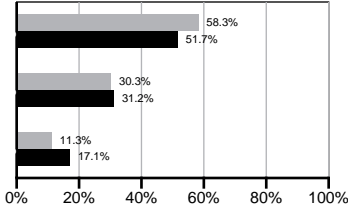
Palmetto Assessment of State Standards (PASS)

Exemplary

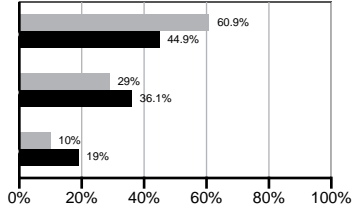
Met

Not Met

English/Language Arts



Mathematics

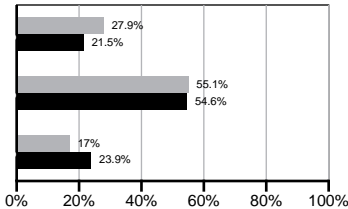


Exemplary

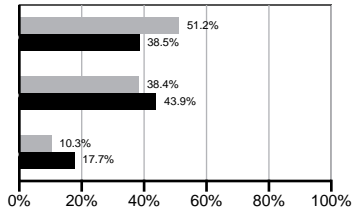
Met

Not Met

Science



Social Studies

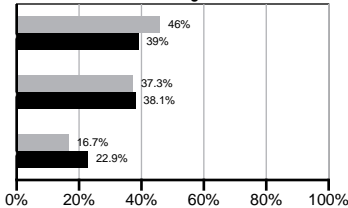


Exemplary

Met

Not Met

Writing



Our school

Elementary schools with Students Like Ours

* Elementary schools with Students Like Ours are elementary schools with poverty indices of no more than 5% above or below the index for the school.

Definition of Critical Terms

Exemplary	"Exemplary" means the student demonstrated exemplary performance in meeting the grade level standard.
Met	"Met" means the student met the grade level standard.
Not Met	"Not Met" means that the student did not meet the grade level standard.

Abbreviations for Missing Data

N/A--Not Applicable N/AV--Not Available N/C--Not Collected N/R--Not Reported I/S--Insufficient Sample

School Profile

	Our School	Change from Last Year	Elementary Schools with Students Like Ours	Median Elementary School
Students (n=843)				
First graders who attended full-day kindergarten	100.0%	No Change	100.0%	100.0%
Retention rate	1.2%	No Change	0.9%	1.0%
Attendance rate	96.6%	Up from 96.0%	96.8%	96.6%
Served by gifted and talented program	N/AV	N/AV	N/AV	N/AV
With disabilities other than speech	N/AV	N/AV	N/AV	N/AV
Older than usual for grade	N/AV	N/AV	N/AV	N/AV
Out-of-school suspensions or expulsions for violent and/or criminal offenses	0.1%	Down from 1.6%	0.0%	0.0%
Teachers (n=53)				
Teachers with advanced degrees	50.9%	Down from 55.6%	63.5%	63.0%
Continuing contract teachers	N/AV	N/AV	N/AV	N/AV
Teachers returning from previous year	89.6%	Up from 89.2%	90.3%	88.7%
Teacher attendance rate	95.1%	Up from 93.7%	95.1%	95.1%
Average teacher salary*	\$44,604	Up 0.0%	\$48,843	\$47,210
Professional development days/teacher	15.3 days	Up from 10.0 days	10.9 days	10.5 days
School				
Principal's years at school	12.0	Up from 11.0	5.0	4.0
Student-teacher ratio in core subjects	19.0 to 1	Down from 19.5 to 1	20.3 to 1	20.0 to 1
Prime instructional time	89.8%	Up from 88.3%	90.5%	90.5%
Opportunities in the arts	Good	No Change	Good	Good
SACS accreditation	Yes	No Change	Yes	Yes
Parents attending conferences	100.0%	No Change	100.0%	100.0%
Character development program	Excellent	No Change	Excellent	Excellent
Dollars spent per pupil**	\$7,034	Down 2.3%	\$6,781	\$7,247
Percent of expenditures for instruction**	61.3%	Up from 60.6%	68.4%	68.2%
Percent of expenditures for teacher salaries**	60.2%	Up from 59.6%	66.5%	65.7%

* Includes current year teachers contracted for 185 or more days.

** Prior year audited financial data are reported.

Abbreviations for Missing Data

N/A–Not Applicable N/AV–Not Available N/C–Not Collected N/R–Not Reported I/S–Insufficient Sample

Report of Principal and School Improvement Council

The 2011-12 year was filled with the fun of learning and flourishing as leaders at Newington Elementary. Our classroom lessons were creative and engaging. Students interacted with technology, worked in groups to create projects or solve problems, and contributed to our community through classroom instructional activities that were also connected to leadership and service learning. The students contributed to the Palmetto House, Dorchester County Recycling, the Ronald McDonald House, the American Cancer Society and Jump Rope for Heart. We participated in memorable Peace Flag celebrations throughout the year including school wide BINGO, hallway dances, and Locks for Love. The chorus and recorder clubs performed, students ran the Dolphin Run, and a production of Suessical, Jr. awed young and old alike. We enjoyed hosting visitors for our 1st Leadership Day in April, where our students showcased their talents in performance and public speaking. Through the implementation of the Leader in Me and our club days, our students demonstrated their abilities to lead in all areas of the school culture.

The year was challenging for our staff and students as we continued to implement a rigorous curriculum, participated in benchmark testing, and debriefed about data. As a result, we celebrated successes and planned for differentiated lessons that would challenge each child based on his or her personal performance. Our teachers planned together and trained in the implementation of the Common Core standards and the 7 Habits of Highly Effective People.

We have been blessed with continued success in the team effort of our students, staff, and parents. The results from the 2011 Palmetto Assessment of State Standards reflected gains and earned Newington another "Excellent" report card from the State Department of Education, as well as the Palmetto Gold Award for student achievement. In addition to school wide successes, individual students were winners in essay contests, class and school spelling bees, athletic challenges, and school and district PTA Reflections contests. We ended the year by celebrating our seventy-seven Third-fifth grade Silver and Gold Honor Roll recipients (all A's for 3 or 4 nine weeks), our Kindergarten graduation, and hosting our ever popular Reading Carnival. We are extremely proud of the accomplishments of our students, staff and families as we work together to provide our children with the best educational experience possible.

As you can see, it was another wonderful year for our Newington family. Students and staff challenged each other to be leaders of our selves while living the 7 Habits. We look forward to the 2012-2013 school year. We will be learning more about the Common Core standards as we phase them in over the coming year and we will continue to integrate the Leader in Me philosophy of student leadership along with our PBIS (Positive Behavior Interventions and Supports) goals.

Touching the heart and mind of every learner and developing leaders of our selves is our steadfast commitment.

Cammy Groome, Principal

Catherine Oliver, SIC Chair

Evaluations by Teachers, Students and Parents

	Teachers	Students*	Parents*
Number of surveys returned	60	121	98
Percent satisfied with learning environment	98.3%	86.8%	91.8%
Percent satisfied with social and physical environment	100.0%	90.7%	91.8%
Percent satisfied with school-home relations	94.9%	93.3%	88.7%

* Only students at the highest elementary school grade level and their parents were included.

Abbreviations for Missing Data

N/A–Not Applicable N/AV–Not Available N/C–Not Collected N/R–Not Reported I/S–Insufficient Sample

ESEA/Federal Accountability Rating System

In July 2012, the South Carolina Department of Education was granted a waiver from several accountability requirements of the federal Elementary and Secondary Education Act (ESEA). This waiver allowed SC to replace the former pass/fail system with one that utilizes more of the statewide assessments already in place and combine these subject area results with graduation rate (in high schools) to determine if each school met the target or made progress toward the target. This analysis results in a letter grade for the school rather than the pass/fail system of previous years. For a detailed review of the matrix for each school and districts that determined the letter grade, please use the following link: <http://ed.sc.gov/data/eSEA/> or request this information from your child's district or school.

Overall Weighted Points Total	89.1
Overall Grade Conversion	B

Index Score	Grade	Description
90-100	A	Performance substantially exceeds the state's expectations.
80-89.9	B	Performance exceeds the state's expectations.
70-79.9	C	Performance meets the state's expectations.
60-69.9	D	Performance does not meet the state's expectations.
Less than 60	F	Performance is substantially below the state's expectations

Accountability Indicator for Title I Schools

Newington Elementary School school has been designated as a:

- ☐ Title I Reward School for Performance - among the highest performing Title I schools in a given year.
- ☐ Title I Reward School for Progress – one of the schools with substantial progress in student subgroups.
- ☒ Title I Focus School – one of the schools with the highest average performance gap between subgroups.
- ☐ Title I Priority School – one of the 5% lowest performing Title I schools.
- ☐ Title I School – does not qualify as Reward, Focus or Priority School.
- ☐ Non-Title I School – therefore the designations above are not applicable.

Teacher Quality and Student Attendance

	Our District	State
Classes in low poverty schools not taught by highly qualified teachers	0.2%	2.6%
Classes in high poverty schools not taught by highly qualified teachers	N/A	5.1%

	Our School	State Objective	Met State Objective
Classes not taught by highly qualified teachers	0.0%	0.0%	Yes
Student attendance rate	96.6%	94.0%*	Yes

* Or greater than last year

Performance By Group

Subgroups	ELA Mean	Math Mean	Science Mean	Social Studies Mean	ELA % Tested	Math % Tested
-----------	----------	-----------	--------------	---------------------	--------------	---------------

Grades 3-5

All Students	686.4	685.8	643.0	664.7	100.0	100.0
Male	678.1	679.9	642.3	660.7	100.0	100.0
Female	693.9	691.2	643.5	668.3	100.0	100.0
White	695.3	697.8	653.7	670.3	100.0	100.0
African American	661.2	654.4	613.4	653.3	100.0	100.0
Asian/Pacific Islander	N/A	N/A	N/A	N/A	N/A	N/A
Hispanic	N/A	N/A	N/A	N/A	N/A	N/A
American Indian/Alaskan	N/A	N/A	N/A	N/A	N/A	N/A
Disabled	628.1	623.6	593.6	620.5	100.0	100.0
Limited English Proficient	N/A	N/A	N/A	N/A	N/A	N/A
Subsidized meals	666.3	667.9	624.3	650.1	100.0	100.0
Annual Measurable Objective (AMO)	630.0	630.0	630.0	630.0	95.0	95.0

Abbreviations for Missing Data

N/A–Not Applicable N/AV–Not Available N/C–Not Collected N/R–Not Reported I/S–Insufficient Sample

PASS Performance By Grade Level

	Grade	Enrollment 1st Day of Testing	% Tested	% Not Met	% Met	% Exemplary	% Met or Exemplary
English/Language Arts							
2011	3	125	100	5.3	24.6	70.2	94.7
	4	149	99.3	13.3	35.7	51	86.7
	5	146	100	16.1	40.9	43.1	83.9
	6	N/A	N/AV	N/A	N/A	N/A	N/A
	7	N/A	N/AV	N/A	N/A	N/A	N/A
	8	N/A	N/AV	N/A	N/A	N/A	N/A
2012	3	157	100	9.1	16.1	74.8	90.9
	4	126	100	16.8	41.6	41.6	83.2
	5	138	100	9.8	36.4	53.8	90.2
	6	N/A	N/AV	N/A	N/A	N/A	N/A
	7	N/A	N/AV	N/A	N/A	N/A	N/A
	8	N/A	N/AV	N/A	N/A	N/A	N/A
Mathematics							
2011	3	125	100	8.8	22.8	68.4	91.2
	4	149	100	13.3	30.8	55.9	86.7
	5	146	100	10.9	34.3	54.7	89.1
	6	N/A	N/AV	N/A	N/A	N/A	N/A
	7	N/A	N/AV	N/A	N/A	N/A	N/A
	8	N/A	N/AV	N/A	N/A	N/A	N/A
2012	3	157	100	10.5	18.9	70.6	89.5
	4	126	100	9.7	33.6	56.6	90.3
	5	138	100	10.6	39.4	50	89.4
	6	N/A	N/AV	N/A	N/A	N/A	N/A
	7	N/A	N/AV	N/A	N/A	N/A	N/A
	8	N/A	N/AV	N/A	N/A	N/A	N/A
Science							
2011	3	62	100	12.7	50.9	36.4	87.3
	4	149	100	17.5	57.3	25.2	82.5
	5	74	100	18.6	35.7	45.7	81.4
	6	N/A	N/AV	N/A	N/A	N/A	N/A
	7	N/A	N/AV	N/A	N/A	N/A	N/A
	8	N/A	N/AV	N/A	N/A	N/A	N/A
2012	3	80	100	25.3	37.3	37.3	74.7
	4	125	100	17	67.9	15.2	83
	5	70	100	9	55.2	35.8	91
	6	N/A	N/AV	N/A	N/A	N/A	N/A
	7	N/A	N/AV	N/A	N/A	N/A	N/A
	8	N/A	N/AV	N/A	N/A	N/A	N/A

Abbreviations for Missing Data

N/A–Not Applicable N/AV–Not Available N/C–Not Collected N/R–Not Reported I/S–Insufficient Sample

PASS Performance By Grade Level

	Grade	Enrollment 1st Day of Testing	% Tested	% Not Met	% Met	% Exemplary	% Met or Exemplary
--	-------	----------------------------------	----------	-----------	-------	-------------	-----------------------

Social Studies

2011	3	63	100	8.5	27.1	64.4	91.5
	4	149	100	9.1	42.7	48.3	90.9
	5	74	100	23.2	44.9	31.9	76.8
	6	N/A	N/AV	N/A	N/A	N/A	N/A
	7	N/A	N/AV	N/A	N/A	N/A	N/A
	8	N/A	N/AV	N/A	N/A	N/A	N/A
2012	3	77	100	10.3	23.5	66.2	89.7
	4	126	100	8.8	41.6	49.6	91.2
	5	69	100	15.2	50	34.8	84.8
	6	N/A	N/AV	N/A	N/A	N/A	N/A
	7	N/A	N/AV	N/A	N/A	N/A	N/A
	8	N/A	N/AV	N/A	N/A	N/A	N/A

Writing

2011	3	N/A	N/AV	N/A	N/A	N/A	N/A
	4	N/A	N/AV	N/A	N/A	N/A	N/A
	5	146	96.6	12.8	40.6	46.6	87.2
	6	N/A	N/AV	N/A	N/A	N/A	N/A
	7	N/A	N/AV	N/A	N/A	N/A	N/A
	8	N/A	N/AV	N/A	N/A	N/A	N/A
2012	3	N/A	N/AV	N/A	N/A	N/A	N/A
	4	N/A	N/AV	N/A	N/A	N/A	N/A
	5	137	94.9	16.7	37.3	46	83.3
	6	N/A	N/AV	N/A	N/A	N/A	N/A
	7	N/A	N/AV	N/A	N/A	N/A	N/A
	8	N/A	N/AV	N/A	N/A	N/A	N/A

Abbreviations for Missing Data

N/A–Not Applicable

N/AV–Not Available

N/C–Not Collected

N/R–Not Reported

I/S–Insufficient Sample