



James B. Edwards Elementary

855 Von Kolnitz Road
Mt. Pleasant, SC 29464

Grades	PK-5 Elementary School	
Enrollment	555 Students	
Principal	Francine B. Mitchell	843-849-2805
Superintendent	Dr. Nancy J. McGinley	843-937-6319
Board Chair	Mr. Chris Fraser	843-725-7200

THE STATE OF SOUTH CAROLINA 2012 ANNUAL SCHOOL REPORT CARD

RATINGS OVER 5-YEAR PERIOD

YEAR	ABSOLUTE RATING	GROWTH RATING
2012	Excellent	Excellent
2011	Excellent	Excellent
2010	Excellent	Excellent
2009	Excellent	Good
2008	Good	Average

DEFINITIONS OF SCHOOL RATING TERMS

- Excellent – School performance substantially exceeds the standards for progress toward the 2020 SC Performance Vision
- Good – School performance exceeds the standards for progress toward the 2020 SC Performance Vision
- Average – School performance meets the standards for progress toward the 2020 SC Performance Vision
- Below Average – School is in jeopardy of not meeting the standards for progress toward the 2020 SC Performance Vision
- At-Risk – School performance fails to meet the standards for progress toward the 2020 SC Performance Vision

SOUTH CAROLINA PERFORMANCE VISION

By 2020 all students will graduate with the knowledge and skills necessary to compete successfully in the global economy, participate in a democratic society and contribute positively as members of families and communities.

<http://ed.sc.gov>
<http://www.eoc.sc.gov>

Percent of Student PASS Records Matched for Purpose of Computing Growth Rating

Percent of students tested in 2011-12 whose 2010-11 test scores were located

94.6%

ABSOLUTE RATINGS OF ELEMENTARY SCHOOLS WITH STUDENTS LIKE OURS*

Excellent	Good	Average	Below Average	At-Risk
23	1	0	0	0

* Ratings are calculated with data available by 11/07/2012.

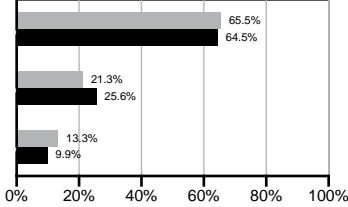
Palmetto Assessment of State Standards (PASS)

Exemplary

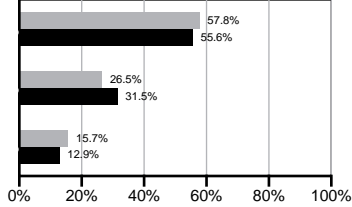
Met

Not Met

English/Language Arts



Mathematics

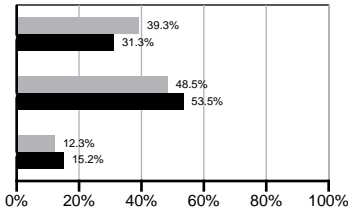


Exemplary

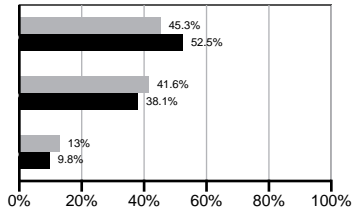
Met

Not Met

Science



Social Studies

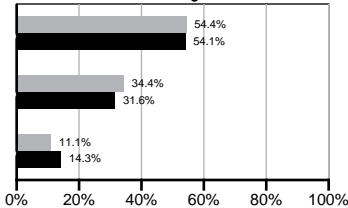


Exemplary

Met

Not Met

Writing



Our school

Elementary schools with Students Like Ours

* Elementary schools with Students Like Ours are elementary schools with poverty indices of no more than 5% above or below the index for the school.

Definition of Critical Terms

Exemplary	"Exemplary" means the student demonstrated exemplary performance in meeting the grade level standard.
Met	"Met" means the student met the grade level standard.
Not Met	"Not Met" means that the student did not meet the grade level standard.

Abbreviations for Missing Data

N/A--Not Applicable

N/AV--Not Available

N/C--Not Collected

N/R--Not Reported

I/S--Insufficient Sample

School Profile

	Our School	Change from Last Year	Elementary Schools with Students Like Ours	Median Elementary School
Students (n=555)				
First graders who attended full-day kindergarten	100.0%	Up from 97.8%	100.0%	100.0%
Retention rate	0.8%	Down from 1.3%	0.6%	1.0%
Attendance rate	96.5%	No Change	97.0%	96.6%
Served by gifted and talented program	N/AV	N/AV	N/AV	N/AV
With disabilities other than speech	N/AV	N/AV	N/AV	N/AV
Older than usual for grade	N/AV	N/AV	N/AV	N/AV
Out-of-school suspensions or expulsions for violent and/or criminal offenses	0.0%	No Change	0.0%	0.0%
Teachers (n=39)				
Teachers with advanced degrees	61.5%	Down from 67.5%	62.0%	63.0%
Continuing contract teachers	N/AV	N/AV	N/AV	N/AV
Teachers returning from previous year	87.8%	Up from 84.6%	91.1%	88.7%
Teacher attendance rate	98.5%	Up from 96.6%	95.8%	95.1%
Average teacher salary*	\$47,117	Down 1.1%	\$48,590	\$47,210
Professional development days/teacher	9.3 days	Down from 12.9 days	9.3 days	10.5 days
School				
Principal's years at school	3.0	Up from 2.0	5.0	4.0
Student-teacher ratio in core subjects	22.3 to 1	Up from 20.8 to 1	21.3 to 1	20.0 to 1
Prime instructional time	94.9%	Up from 92.9%	91.5%	90.5%
Opportunities in the arts	Good	No Change	Good	Good
SACS accreditation	No	No Change	Yes	Yes
Parents attending conferences	100.0%	Up from 99.0%	100.0%	100.0%
Character development program	Excellent	No Change	Excellent	Excellent
Dollars spent per pupil**	\$7,260	Down 6.0%	\$6,334	\$7,247
Percent of expenditures for instruction**	70.7%	Down from 72.0%	69.4%	68.2%
Percent of expenditures for teacher salaries**	69.4%	Down from 70.6%	69.0%	65.7%

* Includes current year teachers contracted for 185 or more days.

** Prior year audited financial data are reported.

Abbreviations for Missing Data

N/A–Not Applicable N/AV–Not Available N/C–Not Collected N/R–Not Reported I/S–Insufficient Sample

Report of Principal and School Improvement Council

Our primary goal at James B. Edwards Elementary (JBE) is to provide all students with a comprehensive variety of academic opportunities in a safe and nurturing learning environment.

Our success is directly related to the wide array of educational experiences that we offer our children. JBE puts a great emphasis on having parents, teachers, and the community working together to provide meaningful educational experiences and opportunities for all of our students. A few great examples are our Family Reading Night, Family Math Night and Science Fair.

In addition to great academic rigor in the core subject areas, our students are afforded many wonderful experiences in the arts. The arts are integrated frequently into every classroom at JBE. We even have a special day toward the end of the year in which we celebrate the arts. At May Day, our classes learn performances that they share with the community.

JBE also has a great character education program. We realize the importance of developing the whole child. This includes providing students with opportunities to learn about social well being, responsibility, and acting in a moral and ethical manner.

Our great success is due to many different groups. The JBE PTO and our JBETLE Endowment are both actively involved in conducting fundraisers, social events, and other programs that help support our students and teachers.

Francine Mitchell, Principal Jake Rambo, SIC Chairperson

Evaluations by Teachers, Students and Parents			
	Teachers	Students*	Parents*
Number of surveys returned	17	87	45
Percent satisfied with learning environment	94.1%	94.3%	95.5%
Percent satisfied with social and physical environment	100.0%	88.4%	91.1%
Percent satisfied with school-home relations	100.0%	90.8%	97.7%

* Only students at the highest elementary school grade level and their parents were included.

ESEA/Federal Accountability Rating System

In July 2012, the South Carolina Department of Education was granted a waiver from several accountability requirements of the federal Elementary and Secondary Education Act (ESEA). This waiver allowed SC to replace the former pass/fail system with one that utilizes more of the statewide assessments already in place and combine these subject area results with graduation rate (in high schools) to determine if each school met the target or made progress toward the target. This analysis results in a letter grade for the school rather than the pass/fail system of previous years. For a detailed review of the matrix for each school and districts that determined the letter grade, please use the following link: <http://ed.sc.gov/data/eSEA/> or request this information from your child's district or school.

Overall Weighted Points Total	98.1
Overall Grade Conversion	A

Index Score	Grade	Description
90-100	A	Performance substantially exceeds the state's expectations.
80-89.9	B	Performance exceeds the state's expectations.
70-79.9	C	Performance meets the state's expectations.
60-69.9	D	Performance does not meet the state's expectations.
Less than 60	F	Performance is substantially below the state's expectations

Accountability Indicator for Title I Schools

James B. Edwards Elementary school has been designated as a:

- ☐ Title I Reward School for Performance - among the highest performing Title I schools in a given year.
- ☐ Title I Reward School for Progress – one of the schools with substantial progress in student subgroups.
- ☐ Title I Focus School – one of the schools with the highest average performance gap between subgroups.
- ☐ Title I Priority School – one of the 5% lowest performing Title I schools.
- ☐ Title I School – does not qualify as Reward, Focus or Priority School.
- ☒ Non-Title I School – therefore the designations above are not applicable.

Teacher Quality and Student Attendance

	Our District	State
Classes in low poverty schools not taught by highly qualified teachers	4.3%	2.6%
Classes in high poverty schools not taught by highly qualified teachers	8.3%	5.1%

	Our School	State Objective	Met State Objective
Classes not taught by highly qualified teachers	0.0%	0.0%	Yes
Student attendance rate	96.5%	94.0%*	Yes

* Or greater than last year

Performance By Group

Subgroups	ELA Mean	Math Mean	Science Mean	Social Studies Mean	ELA % Tested	Math % Tested
Grades 3-5						
All Students	688.7	674.5	655.6	657.9	100.0	100.0
Male	684.2	677.7	655.3	667.8	100.0	100.0
Female	693.6	671.1	656.0	646.6	100.0	100.0
White	699.5	685.1	667.0	665.7	100.0	100.0
African American	655.4	635.9	619.3	625.7	100.0	100.0
Asian/Pacific Islander	N/A	N/A	N/A	N/A	N/A	N/A
Hispanic	N/A	N/A	N/A	N/A	N/A	N/A
American Indian/Alaskan	N/A	N/A	N/A	N/A	N/A	N/A
Disabled	N/A	N/A	N/A	N/A	N/A	N/A
Limited English Proficient	N/A	N/A	N/A	N/A	N/A	N/A
Subsidized meals	648.5	632.8	615.6	612.5	100.0	100.0
Annual Measurable Objective (AMO)	630.0	630.0	630.0	630.0	95.0	95.0

Abbreviations for Missing Data

N/A–Not Applicable N/AV–Not Available N/C–Not Collected N/R–Not Reported I/S–Insufficient Sample

PASS Performance By Grade Level

	Grade	Enrollment 1st Day of Testing	% Tested	% Not Met	% Met	% Exemplary	% Met or Exemplary
English/Language Arts							
2011	3	76	100	7.2	20.3	72.5	92.8
	4	86	100	11.9	28.6	59.5	88.1
	5	105	100	8	43	49	92
	6	N/A	N/AV	N/A	N/A	N/A	N/A
	7	N/A	N/AV	N/A	N/A	N/A	N/A
	8	N/A	N/AV	N/A	N/A	N/A	N/A
2012	3	89	100	14.1	17.6	68.2	85.9
	4	79	100	12	17.3	70.7	88
	5	95	100	13.5	28.1	58.4	86.5
	6	N/A	N/AV	N/A	N/A	N/A	N/A
	7	N/A	N/AV	N/A	N/A	N/A	N/A
	8	N/A	N/AV	N/A	N/A	N/A	N/A
Mathematics							
2011	3	76	100	20.3	27.5	52.2	79.7
	4	86	100	9.5	28.6	61.9	90.5
	5	105	100	14	39	47	86
	6	N/A	N/AV	N/A	N/A	N/A	N/A
	7	N/A	N/AV	N/A	N/A	N/A	N/A
	8	N/A	N/AV	N/A	N/A	N/A	N/A
2012	3	89	100	22.4	23.5	54.1	77.6
	4	79	100	12	20	68	88
	5	95	100	12.4	34.8	52.8	87.6
	6	N/A	N/AV	N/A	N/A	N/A	N/A
	7	N/A	N/AV	N/A	N/A	N/A	N/A
	8	N/A	N/AV	N/A	N/A	N/A	N/A
Science							
2011	3	38	100	28.6	40	31.4	71.4
	4	86	100	11.9	58.3	29.8	88.1
	5	52	100	20	48	32	80
	6	N/A	N/AV	N/A	N/A	N/A	N/A
	7	N/A	N/AV	N/A	N/A	N/A	N/A
	8	N/A	N/AV	N/A	N/A	N/A	N/A
2012	3	44	100	26.2	31	42.9	73.8
	4	79	100	6.7	58.7	34.7	93.3
	5	48	100	8.7	47.8	43.5	91.3
	6	N/A	N/AV	N/A	N/A	N/A	N/A
	7	N/A	N/AV	N/A	N/A	N/A	N/A
	8	N/A	N/AV	N/A	N/A	N/A	N/A

Abbreviations for Missing Data

N/A–Not Applicable N/AV–Not Available N/C–Not Collected N/R–Not Reported I/S–Insufficient Sample

PASS Performance By Grade Level

	Grade	Enrollment 1st Day of Testing	% Tested	% Not Met	% Met	% Exemplary	% Met or Exemplary
Social Studies							
2011	3	38	100	8.6	17.1	74.3	91.4
	4	86	100	10.7	38.1	51.2	89.3
	5	53	100	17.6	29.4	52.9	82.4
	6	N/A	N/AV	N/A	N/A	N/A	N/A
	7	N/A	N/AV	N/A	N/A	N/A	N/A
	8	N/A	N/AV	N/A	N/A	N/A	N/A
2012	3	45	100	16.3	27.9	55.8	83.7
	4	79	100	6.7	42.7	50.7	93.3
	5	47	100	20.9	53.5	25.6	79.1
	6	N/A	N/AV	N/A	N/A	N/A	N/A
	7	N/A	N/AV	N/A	N/A	N/A	N/A
	8	N/A	N/AV	N/A	N/A	N/A	N/A
Writing							
2011	3	N/A	N/AV	N/A	N/A	N/A	N/A
	4	N/A	N/AV	N/A	N/A	N/A	N/A
	5	105	100	12	26	62	88
	6	N/A	N/AV	N/A	N/A	N/A	N/A
	7	N/A	N/AV	N/A	N/A	N/A	N/A
	8	N/A	N/AV	N/A	N/A	N/A	N/A
2012	3	N/A	N/AV	N/A	N/A	N/A	N/A
	4	N/A	N/AV	N/A	N/A	N/A	N/A
	5	97	99	11.1	34.4	54.4	88.9
	6	N/A	N/AV	N/A	N/A	N/A	N/A
	7	N/A	N/AV	N/A	N/A	N/A	N/A
	8	N/A	N/AV	N/A	N/A	N/A	N/A

Abbreviations for Missing Data

N/A–Not Applicable N/AV–Not Available N/C–Not Collected N/R–Not Reported I/S–Insufficient Sample