



St. Andrew's School of Math and Science

30 Chadwick Drive
Charleston, SC 29407

Grades	K-5 Elementary School	
Enrollment	730 Students	
Principal	Amy Cario	843-763-1503
Superintendent	Dr. Nancy J. McGinley	843-937-6319
Board Chair	Mr. Chris Fraser	843-725-7200

THE STATE OF SOUTH CAROLINA 2012 ANNUAL SCHOOL REPORT CARD

RATINGS OVER 5-YEAR PERIOD

YEAR	ABSOLUTE RATING	GROWTH RATING
2012	Excellent	Excellent
2011	Excellent	Excellent
2010	Excellent	Excellent
2009	Excellent	Good
2008	Good	At-Risk

DEFINITIONS OF SCHOOL RATING TERMS

- Excellent – School performance substantially exceeds the standards for progress toward the 2020 SC Performance Vision
- Good – School performance exceeds the standards for progress toward the 2020 SC Performance Vision
- Average – School performance meets the standards for progress toward the 2020 SC Performance Vision
- Below Average – School is in jeopardy of not meeting the standards for progress toward the 2020 SC Performance Vision
- At-Risk – School performance fails to meet the standards for progress toward the 2020 SC Performance Vision

SOUTH CAROLINA PERFORMANCE VISION

By 2020 all students will graduate with the knowledge and skills necessary to compete successfully in the global economy, participate in a democratic society and contribute positively as members of families and communities.

<http://ed.sc.gov>
<http://www.eoc.sc.gov>

Percent of Student PASS Records Matched for Purpose of Computing Growth Rating

Percent of students tested in 2011-12 whose 2010-11 test scores were located

99.1%

ABSOLUTE RATINGS OF ELEMENTARY SCHOOLS WITH STUDENTS LIKE OURS*

Excellent	Good	Average	Below Average	At-Risk
38	24	6	1	0

* Ratings are calculated with data available by 11/07/2012.

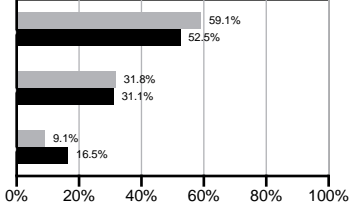
Palmetto Assessment of State Standards (PASS)

Exemplary

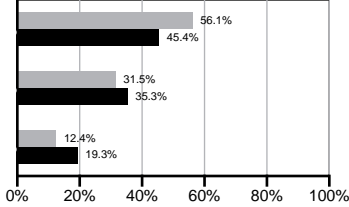
Met

Not Met

English/Language Arts



Mathematics

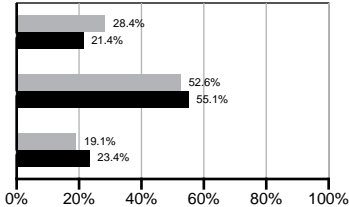


Exemplary

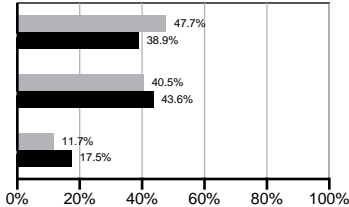
Met

Not Met

Science



Social Studies

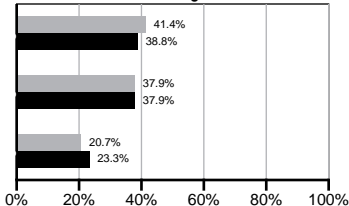


Exemplary

Met

Not Met

Writing



Our school

Elementary schools with Students Like Ours

* Elementary schools with Students Like Ours are elementary schools with poverty indices of no more than 5% above or below the index for the school.

Definition of Critical Terms

Exemplary	"Exemplary" means the student demonstrated exemplary performance in meeting the grade level standard.
Met	"Met" means the student met the grade level standard.
Not Met	"Not Met" means that the student did not meet the grade level standard.

Abbreviations for Missing Data

N/A-Not Applicable N/AV-Not Available N/C-Not Collected N/R-Not Reported I/S-Insufficient Sample

School Profile

	Our School	Change from Last Year	Elementary Schools with Students Like Ours	Median Elementary School
Students (n=730)				
First graders who attended full-day kindergarten	97.4%	Down from 98.4%	100.0%	100.0%
Retention rate	0.5%	Down from 0.6%	0.6%	1.0%
Attendance rate	96.8%	Up from 96.6%	96.9%	96.6%
Served by gifted and talented program	N/AV	N/AV	N/AV	N/AV
With disabilities other than speech	N/AV	N/AV	N/AV	N/AV
Older than usual for grade	N/AV	N/AV	N/AV	N/AV
Out-of-school suspensions or expulsions for violent and/or criminal offenses	0.3%	Up from 0.0%	0.0%	0.0%
Teachers (n=46)				
Teachers with advanced degrees	60.9%	Down from 61.7%	63.0%	63.0%
Continuing contract teachers	N/AV	N/AV	N/AV	N/AV
Teachers returning from previous year	90.5%	Up from 87.8%	90.1%	88.7%
Teacher attendance rate	97.6%	Up from 96.3%	95.0%	95.1%
Average teacher salary*	\$45,057	Down 0.4%	\$49,205	\$47,210
Professional development days/teacher	7.5 days	Up from 6.7 days	10.1 days	10.5 days
School				
Principal's years at school	4.0	Up from 3.0	5.0	4.0
Student-teacher ratio in core subjects	23.1 to 1	Up from 21.2 to 1	20.7 to 1	20.0 to 1
Prime instructional time	94.0%	Up from 92.6%	90.8%	90.5%
Opportunities in the arts	Good	No Change	Good	Good
SACS accreditation	No	No Change	Yes	Yes
Parents attending conferences	100.0%	Up from 97.7%	100.0%	100.0%
Character development program	Excellent	No Change	Excellent	Excellent
Dollars spent per pupil**	\$6,136	Up 1.3%	\$6,767	\$7,247
Percent of expenditures for instruction**	69.2%	Down from 69.5%	69.8%	68.2%
Percent of expenditures for teacher salaries**	67.9%	Up from 67.4%	68.0%	65.7%

* Includes current year teachers contracted for 185 or more days.

** Prior year audited financial data are reported.

Abbreviations for Missing Data

N/A–Not Applicable N/AV–Not Available N/C–Not Collected N/R–Not Reported I/S–Insufficient Sample

Report of Principal and School Improvement Council

St. Andrew's School of Math and Science (SASMS) is a partial magnet school specializing in math and science. The school is situated in a residential neighborhood in the West Ashley area of Charleston. In addition to serving students in the neighborhood, we serve students who come to us from all over Charleston County. We serve a total of 749 students who make up a very diverse student body. This year and the following year, we will be located at a temporary campus while a new state of the art facility is built at our current location.

Through continued shared decision making, a positive learning environment, and high expectations, SASMS continues to be an award-winning school. Based on the 2011 state report card, we have maintained a rating of Excellent or Good on the South Carolina School Report Card and we have made Adequate Yearly Progress (AYP) each year as well. Also, we have maintained Palmetto Gold and Silver Award status. Our students receive top-notch instruction from highly qualified teachers on a daily basis.

Our academic success continues to be how data is used to drive the instruction in the classroom. MAP continues to give teachers data on their students and how instructional needs can be met. Literacy continues to be a district initiative and since we are a math and science school, our teachers utilize math and science in their various literacy programs. Our First Grade Academy (FGA) continues to be a flagship program for the district. Our students that attend this intense intervention program show incredible growth from Fall to Spring. Our interventions are not limited to FGA. Our students who need intervention in reading and/or math receive additional instruction during the school day. Students involved in these interventions have demonstrated positive gains as well.

Students at SASMS have an opportunity to participate in events that reinforce learning in the classroom. In addition to Chorus, MAD Science, SASMS News, and Student Government, we are proud to have a Robotics Club. This club has been well received by parents and students.

Our School Improvement Council and Parent Teacher Association (PTA) work together collaboratively to provide ongoing support to our children, teachers, and staff. Various functions are held throughout the year to help benefit our school.

St. Andrew's School of Math and Science looks forward to our continued success.

Mark Shea, Principal

Caroline Brown, SIC Co-Chair

Tracy Thompson, SIC Co-Chair

Evaluations by Teachers, Students and Parents

	Teachers	Students*	Parents*
Number of surveys returned	46	117	44
Percent satisfied with learning environment	93.5%	76.7%	90.9%
Percent satisfied with social and physical environment	89.1%	71.3%	87.8%
Percent satisfied with school-home relations	89.1%	85.3%	88.1%

* Only students at the highest elementary school grade level and their parents were included.

Abbreviations for Missing Data

N/A–Not Applicable N/AV–Not Available N/C–Not Collected N/R–Not Reported I/S–Insufficient Sample

ESEA/Federal Accountability Rating System

In July 2012, the South Carolina Department of Education was granted a waiver from several accountability requirements of the federal Elementary and Secondary Education Act (ESEA). This waiver allowed SC to replace the former pass/fail system with one that utilizes more of the statewide assessments already in place and combine these subject area results with graduation rate (in high schools) to determine if each school met the target or made progress toward the target. This analysis results in a letter grade for the school rather than the pass/fail system of previous years. For a detailed review of the matrix for each school and districts that determined the letter grade, please use the following link: <http://ed.sc.gov/data/eSEA/> or request this information from your child's district or school.

Overall Weighted Points Total	98.3
Overall Grade Conversion	A

Index Score	Grade	Description
90-100	A	Performance substantially exceeds the state's expectations.
80-89.9	B	Performance exceeds the state's expectations.
70-79.9	C	Performance meets the state's expectations.
60-69.9	D	Performance does not meet the state's expectations.
Less than 60	F	Performance is substantially below the state's expectations

Accountability Indicator for Title I Schools

St. Andrew's School of Math and Science school has been designated as a:

- ☐ Title I Reward School for Performance - among the highest performing Title I schools in a given year.
- ☐ Title I Reward School for Progress – one of the schools with substantial progress in student subgroups.
- ☐ Title I Focus School – one of the schools with the highest average performance gap between subgroups.
- ☐ Title I Priority School – one of the 5% lowest performing Title I schools.
- ☐ Title I School – does not qualify as Reward, Focus or Priority School.
- ☒ Non-Title I School – therefore the designations above are not applicable.

Teacher Quality and Student Attendance

	Our District	State
Classes in low poverty schools not taught by highly qualified teachers	4.3%	2.6%
Classes in high poverty schools not taught by highly qualified teachers	8.3%	5.1%

	Our School	State Objective	Met State Objective
Classes not taught by highly qualified teachers	0.0%	0.0%	Yes
Student attendance rate	96.8%	94.0%*	Yes

* Or greater than last year

Performance By Group

Subgroups	ELA Mean	Math Mean	Science Mean	Social Studies Mean	ELA % Tested	Math % Tested
-----------	----------	-----------	--------------	---------------------	--------------	---------------

Grades 3-5

All Students	682.0	679.4	644.4	662.6	100.0	100.0
Male	677.6	680.0	647.0	663.6	100.0	100.0
Female	686.9	678.8	641.5	661.4	100.0	100.0
White	703.4	698.0	663.2	682.2	100.0	100.0
African American	656.3	654.8	619.7	638.4	100.0	100.0
Asian/Pacific Islander	N/A	N/A	N/A	N/A	N/A	N/A
Hispanic	N/A	N/A	N/A	N/A	N/A	N/A
American Indian/Alaskan	N/A	N/A	N/A	N/A	N/A	N/A
Disabled	N/A	N/A	N/A	N/A	N/A	N/A
Limited English Proficient	N/A	N/A	N/A	N/A	N/A	N/A
Subsidized meals	659.1	657.8	619.6	636.3	100.0	100.0
Annual Measurable Objective (AMO)	630.0	630.0	630.0	630.0	95.0	95.0

Abbreviations for Missing Data

N/A–Not Applicable N/AV–Not Available N/C–Not Collected N/R–Not Reported I/S–Insufficient Sample

PASS Performance By Grade Level

	Grade	Enrollment 1st Day of Testing	% Tested	% Not Met	% Met	% Exemplary	% Met or Exemplary
English/Language Arts							
2011	3	125	100	10	18.3	71.7	90
	4	128	100	10.1	37	52.9	89.9
	5	109	100	13.2	35.8	50.9	86.8
	6	N/A	N/AV	N/A	N/A	N/A	N/A
	7	N/A	N/AV	N/A	N/A	N/A	N/A
	8	N/A	N/AV	N/A	N/A	N/A	N/A
2012	3	114	100	0.9	18.7	80.4	99.1
	4	113	100	11.2	32.7	56.1	88.8
	5	120	100	14.7	43.1	42.2	85.3
	6	N/A	N/AV	N/A	N/A	N/A	N/A
	7	N/A	N/AV	N/A	N/A	N/A	N/A
	8	N/A	N/AV	N/A	N/A	N/A	N/A
Mathematics							
2011	3	125	100	15.8	25.8	58.3	84.2
	4	128	100	6.7	31.1	62.2	93.3
	5	109	100	15.1	33	51.9	84.9
	6	N/A	N/AV	N/A	N/A	N/A	N/A
	7	N/A	N/AV	N/A	N/A	N/A	N/A
	8	N/A	N/AV	N/A	N/A	N/A	N/A
2012	3	114	100	15	26.2	58.9	85
	4	113	100	8.4	31.8	59.8	91.6
	5	120	100	13.8	36.2	50	86.2
	6	N/A	N/AV	N/A	N/A	N/A	N/A
	7	N/A	N/AV	N/A	N/A	N/A	N/A
	8	N/A	N/AV	N/A	N/A	N/A	N/A
Science							
2011	3	62	100	16.7	40	43.3	83.3
	4	128	100	14.2	59.2	26.7	85.8
	5	54	100	23.1	42.3	34.6	76.9
	6	N/A	N/AV	N/A	N/A	N/A	N/A
	7	N/A	N/AV	N/A	N/A	N/A	N/A
	8	N/A	N/AV	N/A	N/A	N/A	N/A
2012	3	57	100	26.9	36.5	36.5	73.1
	4	113	100	17.8	54.2	28	82.2
	5	59	100	14.3	64.3	21.4	85.7
	6	N/A	N/AV	N/A	N/A	N/A	N/A
	7	N/A	N/AV	N/A	N/A	N/A	N/A
	8	N/A	N/AV	N/A	N/A	N/A	N/A

Abbreviations for Missing Data

N/A--Not Applicable N/AV--Not Available N/C--Not Collected N/R--Not Reported I/S--Insufficient Sample

PASS Performance By Grade Level

	Grade	Enrollment 1st Day of Testing	% Tested	% Not Met	% Met	% Exemplary	% Met or Exemplary
Social Studies							
2011	3	63	100	11.7	30	58.3	88.3
	4	128	100	7.5	40.8	51.7	92.5
	5	55	100	22.2	33.3	44.4	77.8
	6	N/A	N/AV	N/A	N/A	N/A	N/A
	7	N/A	N/AV	N/A	N/A	N/A	N/A
	8	N/A	N/AV	N/A	N/A	N/A	N/A
2012	3	57	100	5.5	30.9	63.6	94.5
	4	113	100	9.3	38.3	52.3	90.7
	5	61	100	21.7	53.3	25	78.3
	6	N/A	N/AV	N/A	N/A	N/A	N/A
	7	N/A	N/AV	N/A	N/A	N/A	N/A
	8	N/A	N/AV	N/A	N/A	N/A	N/A
Writing							
2011	3	N/A	N/AV	N/A	N/A	N/A	N/A
	4	N/A	N/AV	N/A	N/A	N/A	N/A
	5	109	100	10.4	37.7	51.9	89.6
	6	N/A	N/AV	N/A	N/A	N/A	N/A
	7	N/A	N/AV	N/A	N/A	N/A	N/A
	8	N/A	N/AV	N/A	N/A	N/A	N/A
2012	3	N/A	N/AV	N/A	N/A	N/A	N/A
	4	N/A	N/AV	N/A	N/A	N/A	N/A
	5	120	100	20.7	37.9	41.4	79.3
	6	N/A	N/AV	N/A	N/A	N/A	N/A
	7	N/A	N/AV	N/A	N/A	N/A	N/A
	8	N/A	N/AV	N/A	N/A	N/A	N/A

Abbreviations for Missing Data

N/A–Not Applicable N/AV–Not Available N/C–Not Collected N/R–Not Reported I/S–Insufficient Sample