

# Maximizing YOUR Resources to Support Family Engagement Opportunities

Leslie Bloss  
Education Associate, SCDE

Missy Martin  
Family Engagement Specialist, Lexington 1

MAXIMIZING YOUR RESOURCES TO  
SUPPORT FAMILY ENGAGEMENT  
OPPORTUNITIES FOR ALL FAMILIES





# SESSION OBJECTIVES

1

Share  
the  
WHY

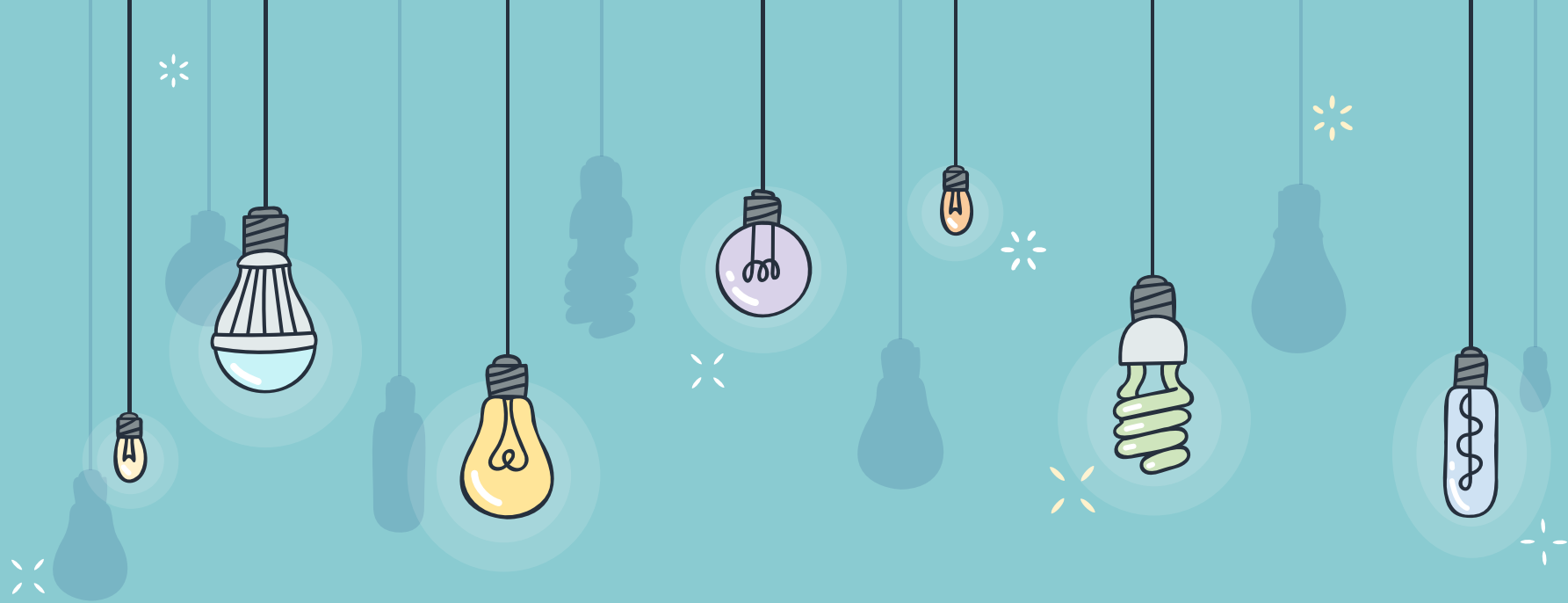
2

Share Lexington  
One's process:  
planning-  
implementation -  
follow up

3

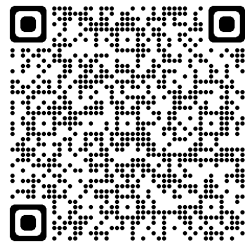
Develop a planning  
guide to maximize  
YOUR family  
engagement  
opportunities



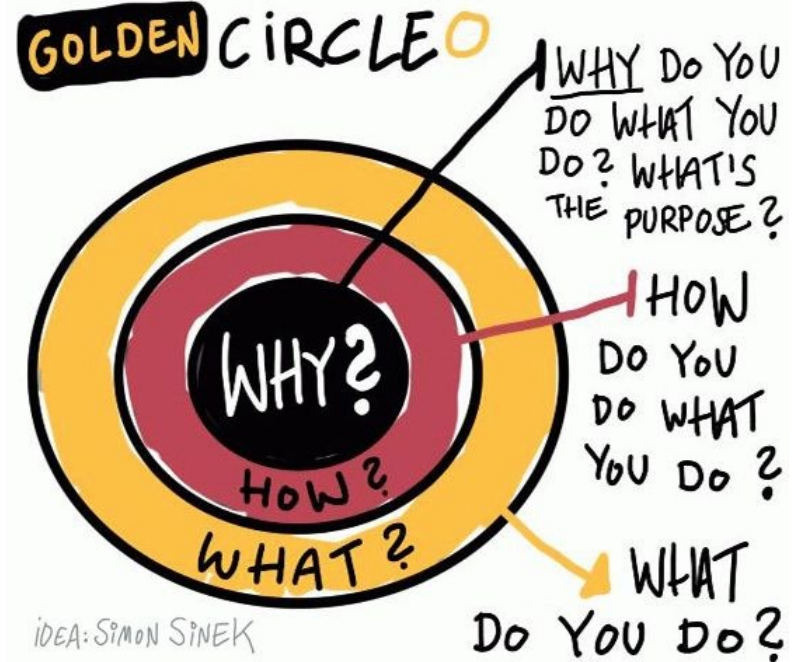


# PLANNING GUIDE

A RESOURCE FOR YOU



# THE WHY





# LEXINGTON ONE'S APPROACH TO FAMILY ENGAGEMENT

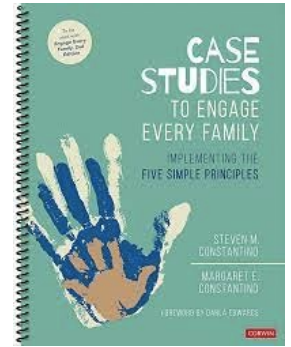
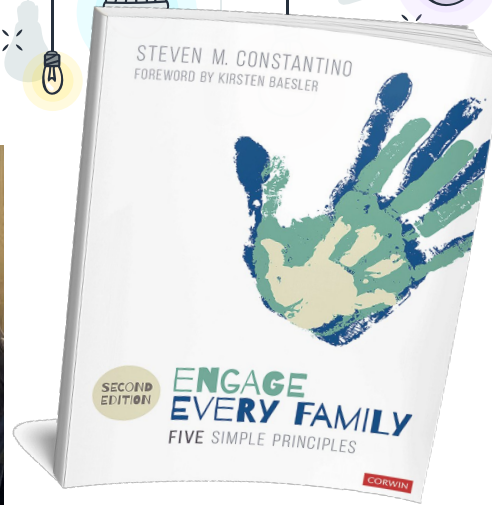
# COLLECTIVE VISION AND DEFINITION

“Family Engagement is a full, equal, and equitable partnership among families, educators, and community partners to promote children’s learning and development from birth through college and career.” ~Dr. Karen Mapp

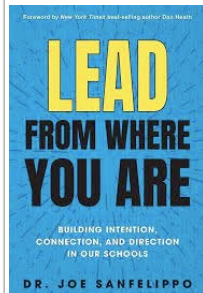
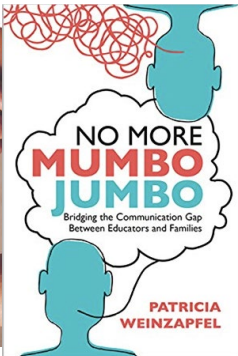
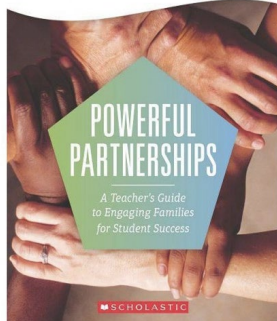
ENGAGE  
EVERY FAMILY  
EVERY CHILD  
EVERY TEACHER  
EVERY DAY







KAREN L. MAPP, ILENE CARVER, AND JESSICA LANDER





# FAMILY RESOURCE CENTERS





PAUSE AND REFLECT

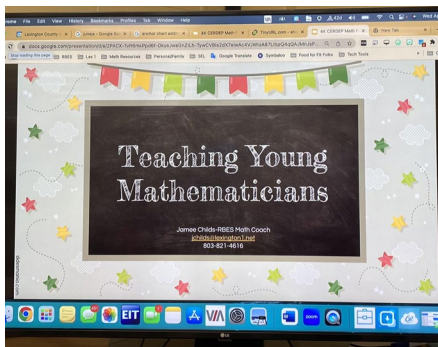
FAMILY ENGAGEMENT  
OPPORTUNITIES...  
SO MUCH MORE THAN  
ONE AND DONE





# CLASSROOM OPPORTUNITIES - LINKED TO LEARNING

- Learning Celebrations (reading, writing, math Units)
- Math Mornings
- Show What You Know (Fall and Spring)
- Real Men Read (male mentoring)
- National Family Engagement Day (November)



**NEW YEAR  
NEW GOALS!**

**3** **Mallard University**  
Friday, September 15, 2023  
7:00 am in the FPES Library

**2** **Topic: Starting a New Year!**  
Your family and students are invited for a fun, informative Mallard University. You will learn about Goal Setting and Feedback Driven Progress Reporting.

**1** Breakfast for students will be available. Coffee, water, and light refreshments will be provided for adults.

**See You There, Mallards!**

**SHOW WHAT  
YOU KNOW**

Come see all the incredible work our PES students have accomplished this year at our Show What You Know Night!

**THURSDAY  
MAY 19, 2022  
5:30 P.M.  
TO  
7:30 P.M.**

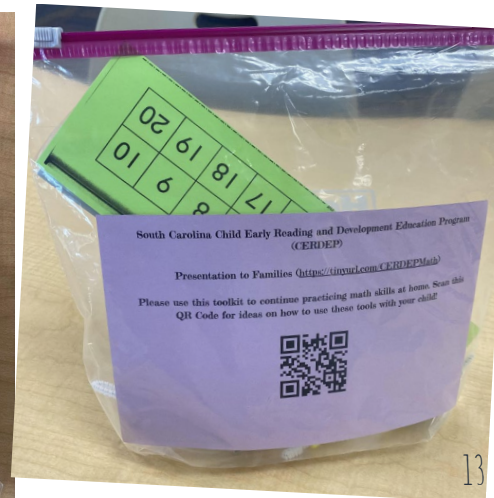
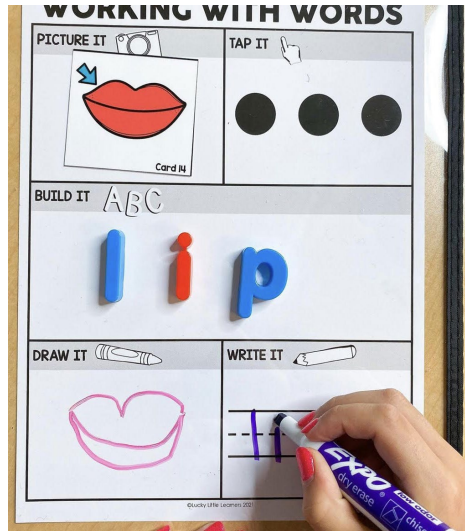
**PELION  
Elementary School**

The Related Arts teachers will have a Spring Arts Showcase.

Students will also be sharing their coding projects!



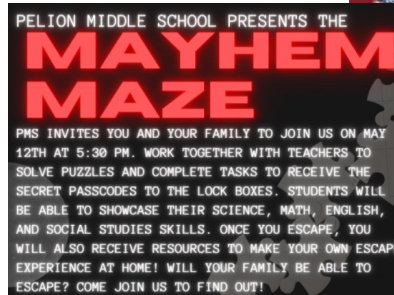
# CURRICULUM SUPPORT KITS





# MIDDLE AND HIGH SCHOOL IDEAS

- BOOK CLUBS
- ESCAPE ROOM
- SPOOKY STEAM NIGHT
- MAYHEM MAZE
- FREE BOOK FAIR
- CAREER FAIR
- COMMUNITY SCHOOLS SHOWCASE





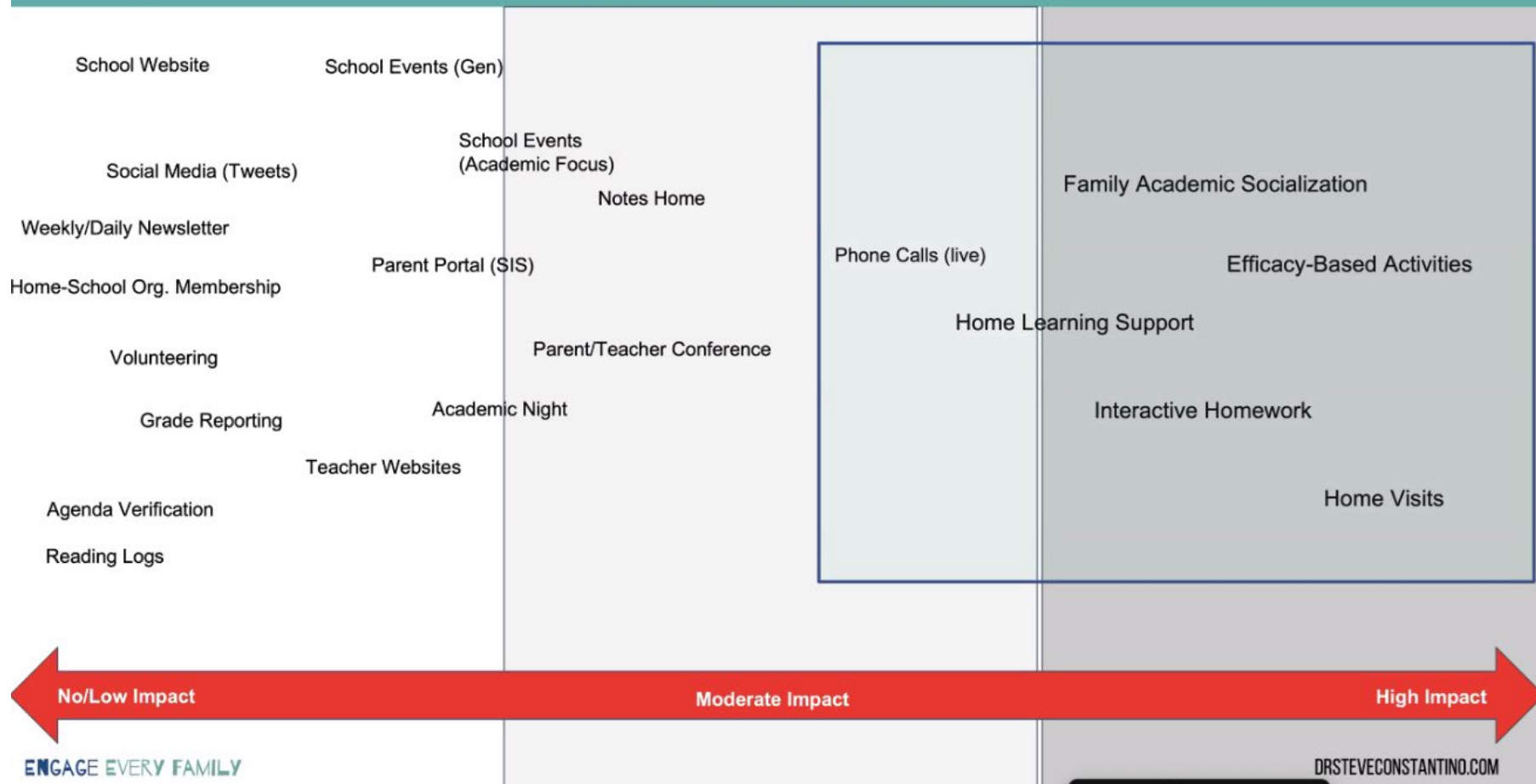


## FAMILY ENGAGEMENT FOR PREK

Family Engagement for Prek is a 14 week program that is offered to families whose children did not receive a Lexington One preschool experience. This program is facilitated by family liaisons in each of the Title I elementary schools. The curriculum is based on the SC Early Learning Standards and each weekly activity has a focus on a particular preschool developmental skill. Liaisons model these activities and experiences that families can replicate and build on at home.



# Types of Communication and Engagement and Their Impact on Student Learning Outcomes



# EFFICACY-BASED ACTIVITIES

- (Empower) When families feel they have the confidence, skills, and abilities to make a positive impact on their child's learning.
- *What does this look like?*
  - Interactive homework
  - Two-way communication (teacher, family, student)
  - Families have a role in the learning process, but are not required to learn or teach the lesson
  - Connects learning with home environment
  - The learning experience empowers family participation
  - Modeling (classroom experiences)







# FAMILY ACADEMIC SOCIALIZATION

The behaviors, beliefs, values, and expectations families have that influence a child's school-related development.

## EMPOWER 1 In School, On Time, All Day, Every Day

EMPOWER

1

LEXINGTON COUNTY  
SCHOOL DISTRICT ONE



**PRESCHOOLERS**  
Build skills and develop good habits for showing up on time



**ELEMENTARY STUDENTS**  
Read well by the end of third grade



**MIDDLE & HIGH SCHOOLERS**  
Stay on track for graduation



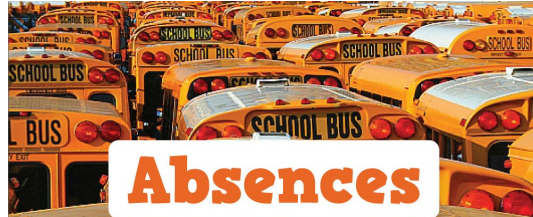
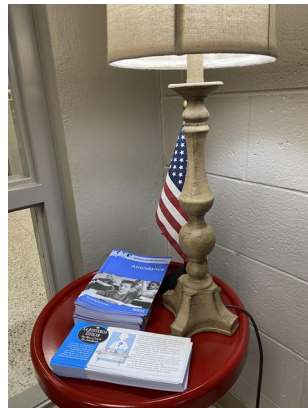
**COLLEGE STUDENTS**  
Earn their degrees



**WORKERS**  
Succeed in their jobs

### Why Regular School Attendance Matters...

- Half the students who miss 2-4 days in September go on to miss nearly a month of school
- Chronically absent (2 days or more a month) students are more likely to drop out of high school
- Chronically absent kindergartners score 20 percent lower in reading and math in later grades
- Student absences in 8th grade are 8 times more predictive of 9th grade course failure than test scores
- Chronic absenteeism is the strongest 6th grade predictor of not graduating high school



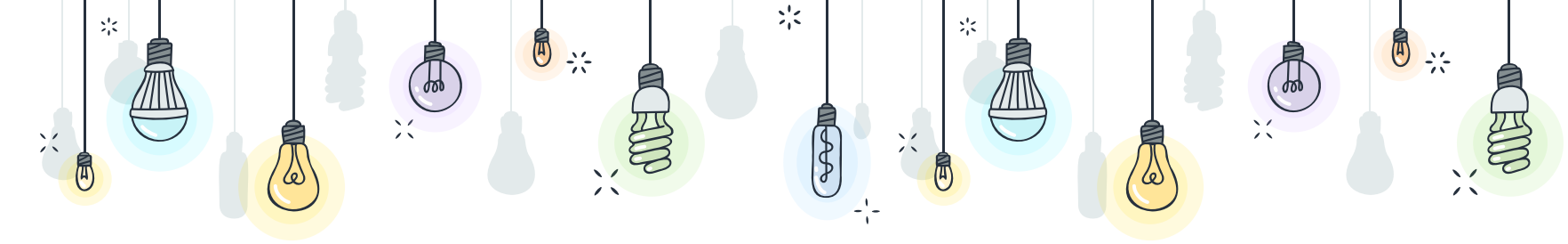
## Absences Add up!

**#SCHOOLEVERYDAY**

Missing just 2 days a month means a child misses 10% of the school year.

**Attendance Works**

**RUPERT GANZER**



# INTERACTIVE HOMEWORK:

an effective practice that encourages home-school collaboration focused on student learning. It engages families in student learning activities that are meaningful, relevant, and support learning goals.

It enables teachers to design and use homework assignments to connect school and home through curriculum related activities. Students are guided to conduct activities and positive conversations with a parent or family partner.

Families comment on their interactions with their children and ask questions of teachers in a section for home-to-school communications. Homework becomes a three-way partnership of students, teachers, and families (Epstein et al., 2009).





# INVISIBLE ENGAGEMENT:

- Engagement that we don't SEE, but of which we will see results
- Promotes the efficacy of families when they are with their children (and we are not).
- We set the stage for invisible engagement to happen.

(Constantino, 2021)



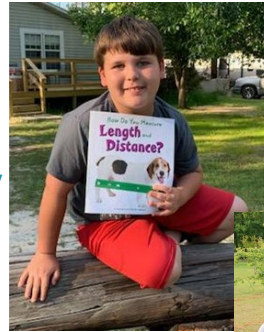


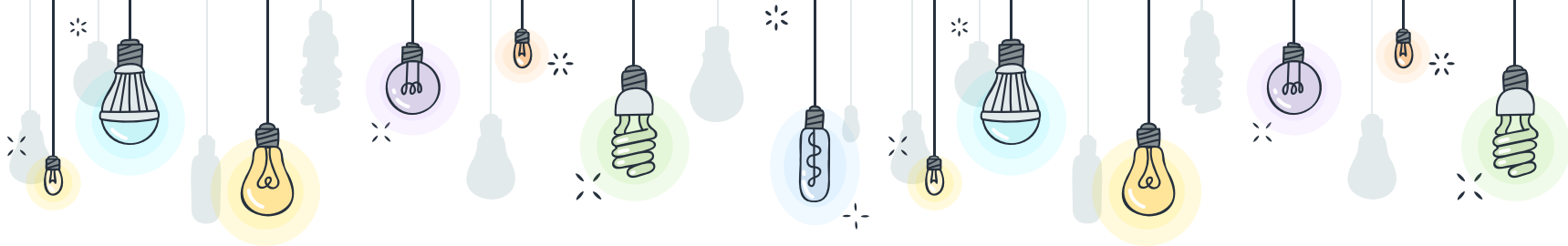


# READING PRIZE PATROL

The Reading Prize Patrol is a family engagement opportunity available to all students and their families. Families sign up to participate and teams of school staff (including administrators, teachers, secretaries, etc) go into the community to “catch” students and families reading at their home.

Each child, including siblings, receive a book and a goody bag. This opportunity allows for home visitation and builds positive relationships with our families. This event is held twice per year and is very popular with students, families, and staff.

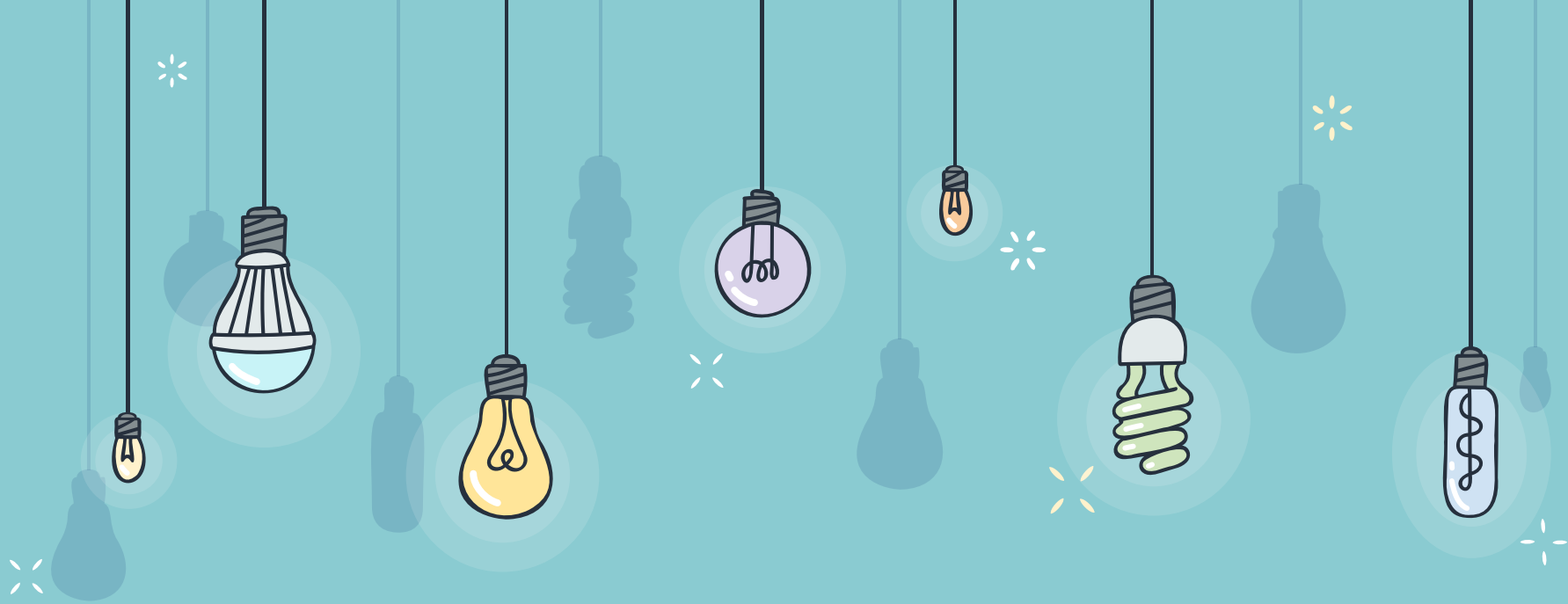




# FOLLOW UP

- Family Liaisons follow up with families to check in, gather feedback, determine needs
- Phone calls, emails, surveys, face-to-face
- Share feedback or suggestions with leadership team
- Measure impact/data
- Take action





PAUSE AND REFLECT

# ACTION STEPS: WHAT NOW?







## STEP #1

Pull out your calendar...right now!

- Pick a date in January to review your Planning Guide
  - Are your plans the same?
  - Have you moved forward with any of your plans?
- Pick a date in March/ April to review your Planning Guide AGAIN!
  - Who do you need to have on board and as a resource?
  - What other resources do you need?



## STEP #2

Make a plan for your planning guide!

- When you return to your office what will you do with your planning guide?





PAUSE AND REFLECT



# \* CONTACT US



**Leslie Bloss**

Title I Parent and Family Engagement  
Coordinator

South Carolina Department of  
Education

[lbloss@ed.sc.gov](mailto:lbloss@ed.sc.gov)



**Missy Martin**

Title I Family Engagement Specialist  
Lexington County School District One  
[mlmartin@lexington1.net](mailto:mlmartin@lexington1.net)

